

# SOLVA NEWS



# NEWYDDION SOLFACH

PDF available to download:  
<https://solva.gov.wales>

**FREE**  
Please take a copy

## Thank you!

A huge thank you to Peter and Jane Wilde for everything they have done for the memorial hall and the village over the years. We would like to wish them good luck on their new adventure.



**SOLVAWI**  
INVITE YOU TO AN OPEN MEETING  
DO COME AND FIND OUT ALL ABOUT US  
**FUN & FRIENDSHIP  
ACTIVITIES & OUTINGS**

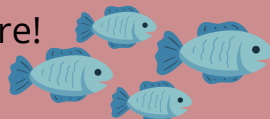
**DAY TRIPS**  
**BOOK CLUB**  
**WALKING GROUP**  
**INTERESTING SPEAKERS**

THURSDAY 8TH SEPTEMBER, 2PM  
SOLVA MEMORIAL HALL  
For further information:  
Call Mary on 01437 710 378

**theWI**  
INSPIRING WOMEN

## Fishy Tales 3

A fishtastic thank you to everyone who attended Fishy Tales 3 at Haroldston House in June: a great audience, all our fishy tellers and especially Hannah, Paula and Lena for running the bar and raffle. We raised an amazing £320 for Solva Care!



**The Royal George**  
SOLVA  
PUB & RESTAURANT

Wood fired pizza & rotisserie chicken

**FREE PARKING!** Tel: 01437 720002

Tuesday night is Ukulele night from 8pm  
Sunday fun quiz from 8:30pm  
Everyone welcome.

Visit us on

From our cows... to your cone

**POINTZ CASTLE  
ICE CREAM**

[www.PointzCastle.com](http://www.PointzCastle.com)

07837 995910  
info@llanungar.wales  
www.llanungar.wales

**LLANUNGAR CARAVAN & CAMPING**  
Solva, Pembrokeshire SA62 6UA

**MAINTENANCE MATTERS**  
Home & Garden

Interior/Exterior Decorating  
Fence/Shed/Decking Staining  
Gutter/Fascia/Patio Cleaning  
**ALL Garden Maintenance**

**Prompt, Reliable, FREE Quotations**  
Dean: 01437 720179 or 07811 151678

## County Councillor update

August is traditionally a quiet time in County hall with many officers on holiday. However there is still important business to attend to.

At the last Planning Committee meeting I sat on, we received an updated application in relation to the new Multi Storey Car Park and Transport hub. This revised design now has a more rounder design to be better looking and also aid traffic flow.. There are also more parent and child spaces and questions were raised about the provision of disabled toilet facilities. The application was passed.

More recently as part of the licensing committee we were invited to approve a new table of Maximum Taxi Fares which on average was 15% greater than the last time they were set 3 years ago. As we considered this to be reasonable, this was also approved

Closer to home tarmac repairs have been carried out in the village including pot holes filled in the rear access lane of Bro Dawel. I have been asked several times about the cutting of hedgerows / verges by tractor. This is happening but somewhat slowly and is later this year than usual. However where there is a safety issue eg the road signs at Whitchurch being obstructed, this is dealt with straight away. Any other issues that require my attention, do not hesitate to contact me on 07976 553912

Finally congratulations to Alyssia on winning the recent election and I hope she finds being a member of Solva Community Council rewarding

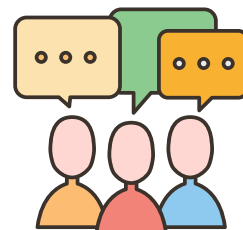
Best regards Mark Carter 07976 553912

## Notice of meeting

A meeting of Solva Community Council (SCC) will be held on Wednesday 7th September 2022 commencing at 6p.m. in Solva Community Clubhouse.

This is a multi-location meeting allowing community councillor's and members of the public to attend virtually or in person. Members of the public wishing to attend should notify the Clerk to the Council in advance. Agenda and minutes are available from the Clerk and at Solva Community Council

Bruce Payne, Clerk to the Council [brucepayne241@gmail.com](mailto:brucepayne241@gmail.com) // 07890 987259



## Bathing Water 2022 Sampling

The latest sample of the Bathing Water 2022 season at Solva Quay took place on Monday 18/7/22 and produced the following results:

E.coli - 11 cfu/100 ml

Enterococci - 7 cfu/100ml

These results are classed as Excellent.



## Wheelchair in Solva Memorial Hall

Solva Care used to have a black/pink folding wheelchair in the Hall, to be lent out short-term to people in the village who needed it. It has not been seen in the hall for months. If you have borrowed it or seen it somewhere, please let Lena know on 07805 717556.

### ST DAVIDS BOOKSHOP

**Lots of new books, children's titles  
and second hand**

**All welcome**

**2 Ty Eurvil, Maes Dyfed, St Davids.**

**01437 720480**

**[stdavidsbookshop@gmail.com](mailto:stdavidsbookshop@gmail.com)**



**Delicious freshly cooked  
local produce**

**Fully licensed café & take-away**

**Booking advised**

**01437 729236**

### Solva WI

**Welcomes new members  
and visitors.**

**We meet in Solva  
Memorial Hall  
on the 2<sup>nd</sup> Thursday  
of each month at 2pm**

**Contact Jilly**

**01437 720922**



## Caerhys Organic Community Agriculture

How to get an Organic Veg-Box through Community Supported Agriculture  
Reliable - Local - Regenerative

Caerhys Organic Community Agriculture (COCA) is an Organic veg-box-scheme in Berea. We sow, nurture and harvest a range of delicious organic vegetables and salads, that is shared out between members every week, all year round.

Members can have as much or little involvement in the work as they want; COCA is open to all. We have flexible membership packages to suit everyone's needs and a hub collection point in Haverfordwest and St Davids.

### What:

What we are doing is called Community Supported Agriculture. We support the growers and share the risks and rewards of growing food together. This type of farming gives people back control on where their food comes from and how it has been produced. COCA has around 40 household members from all walks of life.

### Membership options:

1) Small share: typically suitable for one to two people, £32 per month

2) Large share: typically suitable for three to four people £54 per month

For members using the collection hubs there is an additional cost of £8 per month.

To join, simply visit our website: [www.COCA-CSA.org](http://www.COCA-CSA.org) or contact our membership secretary on [secretary@coca-csa.org](mailto:secretary@coca-csa.org)

### Follow us on:

Instagram: COCA.Growers

Facebook: Caerhys Organic Community Agriculture



## Icelandic horses

On the one extremely wet weekend in July, you might have spotted a large group of “ponies” being ridden through Solva to the harbour. They were actually a group of Icelandic horses. The horses and their owners were taking part in a Summer Camp hosted by Solva Icelandics near Caerfarchell. Icelandics are the pure bred descendants of horses taken from Scandinavia and the British Isles to Iceland by the Vikings, and as well as the normal walk, trot and canter they have two extra gaits, tölt and flying pace. A tölting Icelandic sounds like “black-and-decker, black-and-decker”, rather than the usual “one-two-one-two” of a trotting horse. Although not that tall Icelandic horses are extremely strong, and can easily carry adult riders. They have amazing characters, are very stoic, hardy and willing. They are usually quite fast and great fun to ride!

Solva Icelandics has one of the largest herds in the UK (as well as some rare Icelandic sheep), with four foals born this year.



## Solva Harbour Society

We have been very busy down on the Quay due to the wonderful weather! Please remember that parking on the Quay and launching from Trinity Quay is for SHS Members only. You will find alternative parking at the Harbour car park (pay and display) and visitors can launch from the Sand Quay (fees payable). A speed limit of 4 knots is applicable within the Harbour, please be aware of swimmers and kayak/paddleboard users.

### **Solva Community Council**

Following the recent by-election, we now have a full complement of councillors to represent Solva over the next five years. The by-election was won by Alyssia Fiander—Houlden after a closely fought campaign, beating Ian Robertson-Steel by 2 votes. She had 103 votes. Sandra Young was third with 73 and Bethan Stevens had 33. The council is composed of the following members: Ifor Thomas Chair, Richard Davies, Vice chair, Colin Reynolds, Joe Griffin, Bethan Hutson, Sam Ellison, Rob Richards. The council now represents a good section of our community from 30-year olds to over 70, a farmer, cafe owner, teachers, an RNLI worker, a young mother and a yoga teacher. With regard to the Chair, the council has resolved to ensure that this rotates annually so the work of the council will be refreshed with new leadership regularly. There is a great deal to do with the future of our play parks still to be decided, our multi-generational path to progress, The Council is also supporting the Memorial Hall in its bid to install solar panels on the roof to help reduce energy consumption. We must continue to work to ensure that our roads are safe. Mark Carter is our County Councillor and he gives full reports back to the community council. The issue of second homes and the levying of increased community charge is a hot topic, one which the Community Council can help shape by feeding the community's views back to Mark.

### **Solva Community Land Trust**

The first engagement meeting of the Community Land trust was held in August and a steady trickle of residents went into the Memorial Hall to find out what was going on. The architects from Pentan, displayed options for the layout of the housing to generate discussion and there was no shortage of that. One of the conditions of development is that a full size junior football pitch is incorporated into the layout. Some people saw this as having an unnecessary limiting impact on the architect's creativity but the architects themselves believe that the pitch can be successfully deployed as a green space within the layout. It could be utilised for a number of activities not limited to football. The number of young players, is increasing and this pitch could prove a valuable resource. The architects stressed their desire to build sustainable homes which will use little energy, an issue that has been brought into sharp focus by recent events. It is hoped to lodge a planning application within the next 12 months so progress will ramp up from here. The CLT is not managed by the Community Council, although it did grow out of it. The Chair is Josh Phillips and the secretary Rachel Kelway-Lewis. If you want to join the CLT it only costs £1 and will ensure that you are kept abreast of developments. The membership secretary is Colin Reynolds.



### **Solva & St Davids Macular Society support group**

Next meetings for September 5th Monday and September 19th Monday at 2pm - 4pm at SOLVA COMMUNITY CLUB HOUSE (SOLVA FOOTBALL CLUB). Macular, including vision impairment and Glaucoma patients are welcome to have support, information and news on treatments and professional help through the contacts of our group to help improve our living with a disability. Enjoy Refreshments and a friendly chat with like minded people. A close family member or carer also welcome. Margaret 07815 729856

### **Macmillan Coffee Morning**

The annual MacMillan Coffee Morning will be held in the Memorial Hall on Thursday 22nd September from 10.30 - 12 noon. There will be a raffle, a cake stall and more. All proceeds and donations on the day will go to the MacMillan Nurses.



## Edge Festival

Thank you everyone for making the Edge festival such a success. For the many of you who attended, it was a great celebration of our community, following a gap of three years. We have had great feedback with many of you commenting on some of new things: the silent disco every evening, the acoustic tent, the choice of food options, the escape room and much more.

We tried to ensure there was something for almost everyone to enjoy with the choice of bands, singer songwriters in the tent, poets, writers, and storytellers. Lots of local families said they and their children felt safe and what a good time they had.

There were a lot of changes to the licence and legal requirements this year and we had to hire additional security and incur significant other costs. Despite this we have managed to stay financially solvent and will share the final position once all the bills have been paid.

So a massive thank you to all of you who attended and made the festival such a joyful weekend.

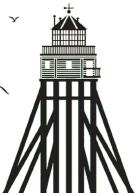
The Edge is organised and run by volunteers so a massive thank you to everyone who sold tickets, served at the bar, sold Topsy Tokens, cleared up rubbish and much more. The Edge would simply not happen without you.

We want to thank some key people who worked hard to make the Edge such a success.

They include Wayne Morse and his stage and sound team, Glyn and Lesley and their security team, the 14 Signal Regiment (EW), Lyn Perkins, Emma Lloyd, Dick Knight, Ian Griffiths, Becky Wright, Andrew Davies, Jacob Wilcock, Keith Denman, Ann Jones, Selina Taylor, Ollie Blackiston, John Williams, Ian Meopham, Josh Phillips, Leuan Morris, John and Pam Jeremy, Clive Thomas, TYF and Pure West Radio.

Finally, thank you to the team who worked for over a year to set up, manage and clear up: Jimmy and Sandra Young, Dai Ball, Colin Reynolds, Major Rob Luke, Nick Beckett, Luci and Gareth Chapman, Ian McDonald, Jane Wilde, Helen Thomas, Lyn Jenkins, Mikey Phillips, Alaric Churchill, Chris and Ellie Sherwin. We were an amazing team.

Thanks to you all from Kay Reynolds, Bex Ricketts and Patrick Nash,  
Trustees of Solva Edge Festival charity.



## Solva Cinema

1 September The Duke (12A)

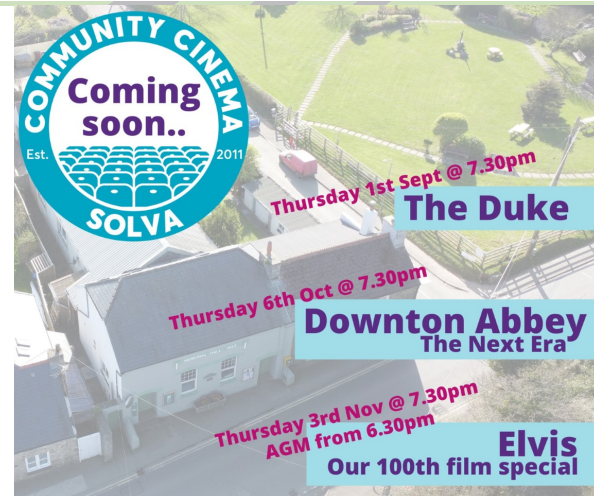
6 October Downton Abbey The Next Era

We plan to hold our AGM before our film on 3 Nov, so look out for posters.

Doors open at 7 pm and the film starts at 7.30 pm.

Refreshments available or bring your own bottle.

Price Adults £5, or become a member for £5/year and get 20% off and free use of a cushion! Under 18's £3.50. We are happy to take suggestions for future films.



## Solva Shop – Siop Solfach

We have for sale the following furniture items: Hostess Trolley (good condition with 4 servers) £30; Wooden frame chair (Needs re-webbing) £15; Tall white cupboard with shelf, £10; Bedside cabinet (white) £5; Dressing table stool, £5.00. For photos and dimensions look on the Solva Care Facebook or [www.solvacare.co.uk](http://www.solvacare.co.uk). For details and purchase contact Fran on 07377059265.

## Solva Care 2022 Questionnaire

The responses made it quite clear that Solva people appreciate Solva Care- and the vast majority thought it would be a good idea to add Domiciliary Care to the social care we are already delivering. We are investigating how best to make a start. This will mean jobs for local people – keep an eye out for the adverts!

We will also be responding to the other information in the questionnaire and will work with the Community Council to plan ahead in order to improve life for everyone in Solva.

### Connecting our community

Did you know that you can donate to your chosen charity when shopping with Amazon Smile?

Just log into [smile.amazon.co.uk](https://smile.amazon.co.uk). Look at the top of the home page and you will see the word supporting, if you have chosen a charity, you will see the charity name here. If you wish to change or add a charity, please press the down arrow and search and select a charity listed. You could support any of the local charities e.g., Solva Memorial Hall, Solva Edge Festival limited, Solva Care, Solva Community Clubhouse, Porthmawr Surf Life Saving Club or national charities.

Amazon will donate a small percentage of the cost of your shopping to your chosen charity. The cost of your shopping does not change.

Do not forget to use [SMILE.AMAZON.CO.UK](https://smile.amazon.co.uk) to support your chosen charity.

Happy Shopping whilst donating.

### Domiciliary Community Care Assistant vacancies. (Solva and N Pembrokeshire)

Solva Care in partnership with Community Interest Care, based in Neyland, is seeking to recruit staff for our new service based around Solva providing Domiciliary and Personal Care.

We are looking for kind, caring and compassionate people who want to make a real difference in our community by providing high quality care and support at home.

Salary: Starting salary based on £11.00 per hour with mileage allowance, rising to £11.50 on completion of probationary period. Full training and a range of benefits will be available. A full clean UK driving license and access to a car essential.

Interested in a career with training opportunities and development potential? If so, we would like to hear from you.

We are an equal opportunities employer and provide a range of benefits for our staff.

For further information and informal discussion please contact:

Contact:

Solva Care Lesley Robertson-Steel. Mobile 07722091664, email [lesleyrs.solvacare@gmail.com](mailto:lesleyrs.solvacare@gmail.com)

Community Interest Care Manager Kelly Brown

Neyland Community Hub 01646629571

[Info@communityinterestcare.com](mailto:Info@communityinterestcare.com).



### West Wales Walking for Well-being

We are holding walks every Monday. Minibus shuttle from Solva Clubhouse at 14:15 stopping at both lay-bys on route downhill to lower Solva. For a short well-being walk.

Walks are paced to suit those who are not used to being active. To book onto a walk, either use our website [www.westwaleswalkingforwellbeing](http://www.westwaleswalkingforwellbeing) or if wanting to be picked up, please phone Sam on 07796526166 or email [same@pembrokeshire.co.uk](mailto:same@pembrokeshire.co.uk)



## Solva Surgery

**Appointments** – We continue to triage all our appointments. Our friendly reception team are unable to offer you any Face-to-Face appointments with the Doctor, however they will offer you an appointment for a telephone consultation; following your telephone consultation, if the doctor feels that it is clinically necessary for you to see them, they will then arrange a time for you to attend the practice.

**GP Vacancy** – Patients of the practice are aware that we have had a GP vacancy at Solva Surgery since 2016. We have had difficulty in recruiting and unfortunately (and like the rest of the UK) there is a national shortage of GPs. Dr Sujan Dhaduvai continues to lead the practice single handed. We rely heavily on locums, and their availability varies from week to week as they are helping out at other practices in Pembrokeshire.

Face coverings - Please do not be offended if asked to wear a mask to see some of our clinical staff members. By wearing a face covering we will all be helping to protect others around us, particularly those who are clinically extremely vulnerable. Please be respectful of other people's choices, whether they choose to wear a face covering or not.

If you have a cough, sore throat or temperature please wear a mask and keep socially distanced from patients in the reception area. You may be asked to wait in the car if you have symptoms of covid.

**Flu Clinics** – We have been advised by our Flu Vaccination suppliers that our scheduled delivery is on track and our flu vaccinations should be with us at the beginning of October. No clinic dates have been set yet, but as soon as we receive our delivery, we will start contacting eligible patients.

**Covid Booster Vaccinations** – Please note, Solva Surgery will not be involved in the Autumn Vaccination Programme. We do not know when the booster vaccination programme will start or where it will be held. Please do not ring the practice. We will, however, advise patients via our Website/Facebook page/the Solva Newsletter if and when we receive an update from the Health Board.

Dispensary & Reception Desk - Please note that the Dispensary and Reception Desk will be CLOSED for administrative work between the hours of 1pm and 2pm. Telephone lines will remain open for anything that is URGENT, please telephone 01437 721306. There will always be a Doctor on call.

## Solva WI

We are very much hoping that ladies who live in Solva & surrounding area will accept the invitation to our next meeting which will include tea & cake!

PLEASE SEE THE 'INVITATION' ON THE FRONT PAGE FOR DETAILS.

Our 'Scarecrow', The Owl & the Pussycat, was much enjoyed, didn't take too much 'working out' & was Runner-up in the BEST category. Our thanks go to Andy Robinson for the beautiful pea-green boat!

## Clwb Solfach/Solva Lunch Club

Firstly, a plea for help! At present we are 5 teams comprised of a Leader & 2 or 3 Helpers who cook & serve lunch for approx 20 on a Wednesday on a weekly rota basis. We would be very grateful if we could encourage 1 more team to lighten the load. Please, if you think you could help, contact Jane Pascoe 01437 721544. Lunch Club resumes every WEDNESDAY from 7th SEPTEMBER at 12.30 in Solva Memorial Hall.

## Name the scarecrow

The results of this competition are as follows.....

Sunday. 1st Humphrey // 2nd William // 3rd Rhodri // 4th Oliver

Monday. 1st Ted // 2nd Sidney (Sean) // 3rd. Humphrey // 4th Carwyn

They are all reported to be happy in their new homes !

Many thanks to Mollie Page for continuing to create these novelties which are unique to Solva. Thanks also to everyone who supported the competition.

## St Davids Surgery

**FLU VACCINATIONS** - we expect to receive our first supply of this year's flu vaccines during the first week of October 2022. Please note – we do not book patients in for flu vaccination until we have received our supply of vaccines, in case of any last-minute delays or disruption to the vaccine delivery schedule. We would therefore kindly ask patients to wait for us to contact them about their flu jab appointment – please be assured that as soon as we receive our first delivery in early October, we will immediately begin contacting patients to book them in. Thank you for your patience and understanding. Please check our website for further updates: <https://stdavids.gpsurgery.net/>

**COVID AUTUMN BOOSTER VACCINATIONS** – we are awaiting details of the arrangements for the autumn covid booster vaccinations for our eligible patients; however, it is very unlikely that these booster vaccinations will be done at the Surgery. We will provide further updates when we know the Health Boards plans. Thank you for your patience.

## Solva AFC - Players and Volunteers wanted

Solva AFC are appealing for more players and volunteers to support the club both on and off the field. If you have any spare time that you could give to the club, please get in touch. Available roles include:

-First aiders -Coaches -Match day admin (submitting information via a smartphone/tablet) Training provided and training costs reimbursed.

If you have any expertise that could benefit the club, or are interested in playing for the club please contact club secretary Medi George via [solvaafc@gmail.com](mailto:solvaafc@gmail.com) or call 07854241589.



## Solva Mosaic Project

20 local people took part in Solva's 3rd community mosaic project. Both beginners and more experienced members contributed to making the the 3 beautiful posts now standing in the corner of Parcyapfel. The project was funded by Solva Care using a grant sourced by Sue Denman. The idea was to commemorate people who had recently passed away during the pandemic who could not have the send off they deserved. The squares depict a wide variety of images all having meaning for the individual artist or some being requested by families to remember their loved ones. Many thanks to Duncan for making the mould and helping to cast the posts and to Dan and Ellis for digging the holes and installing them. Thanks also to my brother Jon for making the concrete pyramids and Ian for crafting the slate. The course was led by Penny with help from Selina and Mic and could not have been done without all the wonderful local mosaic artists. The ribbon was officially cut by Gareth on 12th August during a brief ceremony before everyone went down to the quay for Josie's Memorial row.



## North Pembrokeshire Open Studios

Friday 26th August-Friday 9th September

After its very successful inaugural art trail in 2019, this event has not been able to be held again, until now. From 26th August-9th September artists and makers are opening their studios and homes to the public for a two week art trail around North Pembrokeshire. In Solva, Sarah Burns, Heather Bennett, Raul Speek and Rob Davies are taking part; Nicola Schoenenberger from Solva is showing her work at Basalt & Dune, the shop in St Davids. Basalt & Dune is at 4 Ty Eurvil, Maes Dyfed, off New Street, St Davids SA62 6SR. The full art trail information can be accessed at [www.npopenstudios.co.uk](http://www.npopenstudios.co.uk)



## Scarecrow Trail 2022 – Seafarers

There were 20 Seafarers of many different hues, and many people who braved the hot weather to find them. By popular vote, the winner of Best Scarecrow was Jackie Young with Titanic (Rose de Witt & Jack Dawson) complete with sound track. Funniest Scarecrow was won by Jackie & Terry Edwards with Pirates Love Underpants and Scariest by Jonathan & June Higgins with Edward Shingleton. The runners-up were: Best - WI with the Owl and the Pussy Cat, Funniest - Frazer Nicol with Castaway (Tom Hanks & Wilson) and Scariest - Grace Davies with Barti Ddu. The Trail competition was won by Di Lord & Harry and Libby Hobbs & family. The trail contributed over £500 to Hall funds from sale of maps, car park collection (Becca Wright) and Name a Scarecrow raffle (Carol Ann Jones and Molly Page). Many thanks to all who took part. Full answers & results are on the Solva Community Council website. Please send any comments on the Trail or suggestions for next year's theme to Fran on 07377059265 or [fran34hb@gmail.com](mailto:fran34hb@gmail.com)



## Oriel y Parc

**Main Gallery-** Amgueddfa Cymru / National Museum Wales 'On Your Doorstep' // Opening Friday 1st April **Saint Davids Room** -Heaven and Earth by Alice Tennant // Thursday 4th August - Wednesday 28th September **Discovery Room** - Pembrokeshire Craft Makers // Saturday 3rd September – Sunday 2nd October **Artist in Residence Tower** - Pembrokeshire Light by Beth Robinson // Thursday 4th August – Thursday 29th September

## Tragedy course

Might you be interested in a course for those who like thinking and reading and talking – useful also for anyone who feels they might have missed out on literature when in school? I am planning a series of sessions on Tragedy- what we mean by the word, what we expect when we see one, what effect it has on us. Our studies will be based on the twelve tragedies listed in the first Folio of Shakespeare's plays – you don't need to know them in order to take part. It won't cost a lot, we just need to cover the cost of the hall. Ring me on 721580 or e mail [alanmollie@btinternet.com](mailto:alanmollie@btinternet.com) for more info. Mollie Roach

## Simply Church

No frills church, just an opportunity for Christians from all backgrounds to simply meet together to worship God; pray for our world and walk life's journey together. Come and join us at 10.30am on alternate Sunday mornings at the Community Club House & AFC, Maes Y Mor, Solva, SA62 6XW. Bring your Bible and a mug for a hot drink. The dates for September are 4&18. We would love to see you. Further details from Nadia on 07890 598686

## BasaltxTrefin Open Art Competition: Step Back in Time

This art competition, which is open to anyone wishing to enter, continues to run throughout September (closing Friday 7th October) at Trefin Museum Chapel (opposite The Ship Inn). Great prizes to be won including for children's entries. All the art entries are being left on display in the pews, please come and vote for your favourites. Full information can be downloaded at [www.basaltdune.co.uk/basalt-x-trefin](http://www.basaltdune.co.uk/basalt-x-trefin)

## 2023 Calendar

St Davids & Solva Art Group, together with Solva Care, has produced a wall calendar for 2023. It has pictures painted by the art group members and chosen by Solva Care. You can buy it from Lena 07805 717556 or via our website [www.solvacare.co.uk/calendar2023](http://www.solvacare.co.uk/calendar2023) (there is also a link on our facebook page). The cost is £8 and all proceeds will go to Solva Care.

## Shalom House

The second of Shalom House's regular quizzes was held at The Ship Inn in Solva on 26th July. We had a great evening and a lot of fun was had by all and we raised £100. Our next quiz will be in The Rugby Club in Fishguard 7th September 2022. We are really thankful to the The Ship Inn for allowing us to use their premises.

We would like to runs a Battle of The Bands at Clwb in St Davids on 30th September and we have some great judges. Do you know any local bands that would be interested in taking part, perhaps you children, grandchildren or friends need their first gig. Get in touch for more information. Fishguard's Ladies Circle, St Davids, held an afternoon tea in aid Shalom House raising £750.00. We have been out and about over the past few weeks, including the County Show and Fishguard Carnival. We want to spread the word about what Shalom House offers, as well as raising some well needed funds.

## EcoDewi update

Work continues around the St Davids Peninsula as EcoDewi tries to support the community in tackling the climate and biodiversity crisis at a local level. Our Mini Meadows project has continued with more of our Blue Hearts popping up around the area, highlighting the great work of landowners and residents to create more wildlife habitats. More hearts are available if you want to get involved.

This summer we have launched two new projects. Firstly our Plastic Free Communities project in which we are trying to achieve accreditation for Solva, St Davids and Llanhrian by removing as much single-use plastic. In order to gain to meet the targets set by Surfers Against Sewage we need businesses, residents, organisations, groups, churches and schools to join us and get involved. Mamgu Welshcakes & cafe recently gained their Silver Plastic Free Business Award, and more local businesses are signing up to the scheme. It is really simple to be a part of and we encourage you to contact us to find out more.

Our most recent project is Save Our Swifts. These beautiful and majestic birds that grace our skies each summer, having flown all the way from Africa, are now on the UK Red List for endangered species. Our project aims to do all we can to support their nesting sites across the peninsula. Led by Dan Wright of Goat Street Gallery, we are asking everyone to help log sightings and known nesting spots, and then also we are giving away and installing FREE swift nesting boxes to suitable sites. The work will continue over the autumn and winter months, ready for their return next year. Huge thanks to Sarah Mellor and Pembrokeshire Coast National Park Authority for their support with this project. We are really excited to be planning this year's St Davids Peninsula Great Big Green Week, which runs from Saturday 24th September through to Sunday 2nd October. This is part of the UK wide Great Big Green Week scheme. The aim is to celebrate community action, as well as to raise awareness and inspire others to get involved. As such, we will be organising activities and events across the peninsula, encouraging local businesses, groups and organisations to get involved too.

If you would like to learn more or get involved, please check out our website at [ecodewi.org.uk](http://ecodewi.org.uk), sign up to our e-newsletter or email us at [jeremy@ecodewi.org.uk](mailto:jeremy@ecodewi.org.uk)

## Nights out in Solva

Tickets for The Syrian Baker to be performed by Farnham Maltings on Saturday 8th October in the Memorial Hall at 7,30pm and for Frosty Lanes and Fireside Cheer to be performed by The Mellstock Band on Saturday 10th December also in the Memorial Hall are now available from 01437 721374 or 07970 614233

Adults - £10. Under 16s, Students and disabled - £5

Early booking advised. Both shows popular.



## Solva Defibrillator Locations

Please note Solva has 4 defibrillators at the following locations:

Upper Solva (to open the cabinets press 'C' and turn knob clockwise)

1. Solva Community Clubhouse
2. Solva Memorial Hall

Lower Solva (access code is C123. This code is written on the cabinet and on a notice above the cabinets)

1. Harbour Inn
2. Trinity Quay

## September Calendar

**01/09** - Memorial Hall Coffee Morning 10.30am - 12 // Solva Care Parent & Carer Group, Solva Club House 10-11.30 am // Solva Cinema, the Duke 7pm

**02/09** - Friday Club, Solva Clubhouse 2-4pm

**04/09** - Simply Church, Solva Clubhouse 10:30am // Barry's fun quiz, the Royal George

**05/09** - St Davids Badminton Club // Walk for wellbeing 2.30-3.15 pm (pickup from Solva Clubhouse) // Solva & St Davids Macular Society UK support Group, Solva Clubhouse 2-4pm

**06/09** - Solva Library, Memorial Hall // People's shed, St Davids

**07/09** - Solva Lunch Club, Memorial hall 12:30pm // Community Council Meeting, Solva Clubhouse 7pm // Shalom House Quiz

**08/09** - Memorial Hall Coffee Morning & Solva shop stall 10.30am - 12  
 - Solva Care Parent & Carer Group, Solva Clubhouse 10-11.30 am //  
 - WI Open Meeting, Memorial Hall 2pm

**09/09** - Friday Club, Solva Clubhouse 2 - 4pm

**11/09** - Barry's fun quiz, the Royal George

**12/09** - St Davids Badminton Club // Walk for wellbeing 2.30-3.15 pm (pickup from Solva Clubhouse)

**13/09** - Solva Library, Memorial Hall // People's shed, St Davids

**14/09** - Solva Lunch Club, Memorial Hall 12:30pm

**15/09** - Memorial Hall Coffee Morning 10.30am - 12 //  
 - Solva Care Parent & Carer Group, Solva Club House 10 -11.30 am

**16/09** - Friday Club, Solva Clubhouse 2- 4pm

**18/09** - Simply Church, Solva Clubhouse 10:30am // Barry's fun quiz, the Royal George

**19/09** - St Davids Badminton Club // Walk for wellbeing 2.30-3.15 pm (pickup from Solva Clubhouse) // Solva & St Davids Macular Society UK support Group, Solva Clubhouse

**20/09** - Solva Library, Memorial Hall // People's shed, St Davids

**21/09** - Solva Lunch Club, Memorial Hall 12:30pm

**22/09** - Memorial Hall Coffee Morning 10.30am - 12  
 - Solva Care Parent & Carer Group, Solva Clubhouse 10-11.30 am  
 - Macmillan Coffee Morning, Solva Memorial Hall 10:30 - 12

**23/09** - Friday Club, Solva Clubhouse 2 - 4pm

**24/09** - The Great Big Green Week 2022

**25/09** - Solva Pop-up Shop, Solva Clubhouse 2pm – 4pm  
 - Barry's fun quiz, the Royal George

**26/09** - St Davids Badminton Club // Walk for wellbeing

**27/09** - Solva Library, Memorial Hall // People's shed, St Davids

**28/09** - Solva Lunch Club, Memorial Hall 12:30pm

**29/09** - Memorial Hall Coffee Morning 10.30am - 12  
 - Solva Care Parent & Carer Group, Solva Clubhouse 10-11.30 am

**30/09** - Friday Club, Solva Clubhouse 2 - 4pm



Please keep returning your newsletters to Bay View Stores for recycling with Car-y-Mor!

*If you have anything you would like to contribute to the next edition of the Solva newsletter*

*please contact [solvanews@outlook.com](mailto:solvanews@outlook.com)*



# SOLVA SEAFOODS

Part of Câr-Y-Môr Community Benefit Society

Your purchase from us not only supports sustainable practices, it also helps create jobs locally.

## Shellfish

Lobster, Crab,  
Oysters & Mussels

## Dried Seaweed

Rope Grown in  
Ramsey Sound, Pembrokeshire

07773 846560

sales@solvaseafoods.co.uk

www.solvaseafoods.co.uk



# Solva Edge Festival

3 DAYS OF LIVE MUSIC, POETRY,  
LITERATURE, TALKS, GREAT FOOD  
AND DRINK



29TH - 31ST JULY 2022

# Basalt & Dune

HOMEWARES \* JEWELLERY  
ACCESSORIES \* PAINTINGS \* PRINTS  
SKINCARE \* CARDS & GIFTS

OPEN TUESDAY - SATURDAY

11am - 4.30pm

4 Ty Eurvil, Maes Dyfed, St Davids, SA62 6SR

basaltdune.co.uk



## THE HARBOUR INN

01437 720 013



THE HARBOUR INN OFFERS GOOD FOOD WITH  
THE OPTION OF A DAILY SPECIALS BOARD,  
FRIENDLY STAFF AND A WARM WELCOME.

A DOG FRIENDLY PUB ON THE SEAFRONT OF SOLVA.

We provide free parking in St. Davids and  
free mini-bus to the boat and back.

# AQUAPHOBIA

Marine Wildlife Tours



St Davids, Pembrokeshire  
SA62 6SB

TEL: 01437 720471

www.aquaphobia-ramseyisland.co.uk

Book your trip at Ramsey Island booking office.  
Office by the Grove Hotel, opposite the T.L.C.

10% discount with advert

10% discount with advert



RAUL

SPEEK

GALLERY

Fine Art, Artist's Studio, Photographs, Prints  
Art Workshops, Talks, Music, Jewellery, Gifts  
Music & Tapas Nights, Pop-up Café

The Old Chapel, Main Street, Solva SA62 6UU  
Tel: 01437 721907

e: heather@heatherbennett.co.uk

www.raulspeek.co.uk www.heatherbennett.co.uk

## solva woollen mill

we are open all year

Monday to Friday

9.30am to 5.30pm

Also July to September

Saturday 9.30am - 5.30pm

Sunday 2pm - 5.30pm

www.solvawoollenmill.co.uk

01437 721112

waterwheel shop tearoom

Hosting - Design - Social Media



Unlimited Webhosting  
for £2.99 a month!

0800 6121 051

www.webzer.co.uk

SEO - Ecommerce - IT Services



HARBOUR SOCIETY  
'A Community Benefit Society'

TRINITY QUAY SOLVA

Tel Chairman: 07494 853642

Tel Harbour Master: 07485 655754

Tel Trinity Quay: 01437 721725



## Kayak Fishing

SEASHORE DINING

ANGLING TUITION

FORAGING

PEDAL KAYAK TOURS

BASED IN SOLVA

WWW.CATCHANDCOOK.CO.UK

07869 825412



## Mathias Home Hardware

01437 720340

Mathias Home Hardware is  
a traditional hardware  
shop. We have everything  
for any DIY, home, garden  
or camping needs.

71 Nun Street, St Davids SA62 6NU

## Café on the Quay

Trinity Quay, Solva Harbour

Fine Italian Coffee

Homemade Cakes and Solva Crab

Sandwiches & Local Ice Cream

01437 721725

Enjoy the Solva sunshine sitting on the Quay...  
Bring the family crabbing! We sell bait and lines.

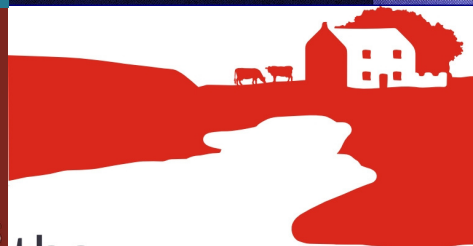


## Menevia BEAUTY & SPA

ENJOY A WIDE VARIETY OF BEAUTY  
SPA AND COMPLEMENTARY THERAPIES  
IN A RELAXING FRIENDLY PLACE

42 GOAT STREET ST DAVIDS

CALL US 01437 454 114



the  
MOUNT

DAIRY FRESH MILK

SOLVA

## BFS

PLUMBING & HEATING

GAS, OIL, LPG

DOMESTIC, COMMERCIAL, CATERING



01437 741 791

paul@barnsteadfiresprinklers.co.uk

