



The newsletter can be downloaded as a pdf from the website:
www.solva.gov.wales

May 2021 No. 146



Free Copy
Please take one



Picnic Area

Solva Community Council is in the process of enhancing and developing the foreshore area opposite the Lower Solva car park. It is already proving to be a big hit with visitors. Plans are going ahead to grass the newly cleared area to make it a more usable space and therefore additional picnic benches are now required. If you would like to help to buy a table and bench set and have you or your company's name displayed, then please contact Bruce Payne on 07890 987259 or Colin Reynolds on 07967 431781.



Wales's path out of lockdown

The Welsh Government has announced a new timetable for easing lockdown rules in Wales with some restrictions being eased earlier than previously announced.

- | | |
|----------|----------------------------------------------------------------------------------------------------------------------------------------------------------------------------------------------------------------------------------------------------------------------------------------|
| 24 April | 6 people from 6 households can meet outdoors - not including children under 11 or Carers |
| 26 April | Outdoor hospitality including pubs, cafés, restaurants
Outdoor wedding receptions up to 30 people
Organised outdoor activities up to 30 people |
| 3 May | Extended households can reform and can meet indoors
Gyms, leisure centres and fitness facilities can reopen
Indoor activities for up to 15 adults including exercise classes and swimming lessons
Children's indoor activities such as Scouts
Community centres can reopen |
| 17 May | Indoor hospitality such as pubs, restaurants and Café reopen
Cinema, theatres, museums and children's soft play areas |

Can anyone recognise this plant and where it grows in Upper Solva?



Dog Poo - Bag it and BIN it

A plea to people walking dogs along the country lanes to not jettison their dog waste bags into the surrounding fields! This has happened throughout lockdown, so holiday makers are not to blame. A particular "hot spot" is to the west of Llanungar Lane heading north to the airfield, close to the last bend, where a gap in the hedge appears to offer an attractive hole through which to throw dog waste bags. The field corner has recently been re-fenced with 26 filled dog bags removed! Cattle graze these fields, and plastic bags and dog faeces can be lethal to cattle. To add to this plea: dog mess has just been left on footpaths or in bags strung up in undergrowth throughout the village, the harbour, the coastal paths and the playing fields. What is the matter with these irresponsible dog owners who apparently have no regard for other people, the environment, wild life or farm animals? **BAG IT AND THEN BIN IT.** There is a fine of £1000 for not disposing of your dog's waste properly.



Do NOT throw
poo bags over
the fence!

The Royal George
SOLVA
PUB & RESTAURANT

Visit us on

New Italian Restaurant Menu

FREE PARKING! Tel: 01437 720002

Thursday is Ukulele night from 8pm!
Barry's Fun Quiz - 9pm Sundays
Everyone welcome.

From our cows... ...to your cone

POINTZ CASTLE ICE CREAM

www.PointzCastle.com

07837 995910
info@llanungar.wales
www.llanungar.wales

LLANUNGAR CARAVAN & CAMPING
Solva, Pembrokeshire SA62 6UA

MAINTENANCE MATTERS
Home & Garden

Interior/Exterior Decorating
Fence/Shed/Decking Staining
Gutter/Fascia/Patio Cleaning
ALL Garden Maintenance

Prompt, Reliable, FREE Quotations
Dean: 01437 720179 or 07811 151678

Solva WI

Our April meeting on Zoom began with an interesting talk by Linda Feagan, the Supporter Relations Officer (SRO) for the Dogs Trust.



The closest Dogs Trust Centre is near Bridgend, where they have

40 kennels, and can care for around 80 dogs at any time. On site are 2 large enclosed fields, where the dogs can burn some energy and play with some friends during an off-lead run, a training barn, 2 exercise areas filled with fun areas to explore, and on-site vet suite. There is a team of 24 staff and an excellent group of dedicated volunteers who help with tasks from dog-walking to fundraising.

Linda offers free talks to community groups and (under normal circumstances) organises tours of the re-homing centre. She also deals with all the local enquiries about donations in memory of a loved one, as well as answering any questions about the free Canine Care Card Scheme or legacies. The annual Fun Day is organised by her and she helps with the social media coverage for the re-homing centre too! The Business part of the meeting included reminder of subscriptions due, the NFWI ballot for Trustees that has been returned and thanks from Menevia WI for inviting them to join us for last month's speaker. Various ideas were discussed for future indoor or "al fresco" meetings.

The Book Group met by Zoom and the Walking Group met for the first time since lockdown.

It is agreed that we take part in the Scarecrow Trail competition in August.

It is hoped to hold the May Committee meeting in Jane Pascoe's garden on 6 May and the Main WI meeting in Parc y Capel on 13 May: both meetings subject to weather and restrictions, needless to say! Otherwise we will meet via Zoom.

Parc y Capel 100 club

Draw results for April

First	Jane Lewis	number 3	£50
Second	Sarah Morgan	number 90	£30
Third	Myra Parkinson	number 55	£20

Memorial Hall 100+ club

The lucky winners of the third draw this year are:

1st	Gerry & Di Monte	number 87	£50
2nd	Jane Pascoe	number 50	£40
3rd	Jono Voyce	number 2	£30

Siop

A "Pop-Up-Shop" with refreshments will be opening soon in Solva Football Clubhouse - something similar To St Davids Siop Y Bobol but on a slightly smaller scale. The first one is likely to be held on Tuesday morning 19 May with further regular dates including weekends, once the event is up and running. All are welcome to come along for a coffee and chat, browse the items and drop off any unwanted items you have which you think others could use. For further details or to offer any goods please Contact Fran Barker on 01437 721164 or 07277 059265



Calling All Scarecrow Builders

Please let me have the name of your chosen character as soon as possible. Remember early bird gets the worm - no duplicates allowed. The theme this year is ANIMATED CHARACTERS. Please contact Chief Scarecrow Fran Barker on 01437 721164 / 07377 059265 or please email: fran34hb@gmail.com



Solva WI

welcomes new members and visitors

We meet via ZOOM at present, but hope to be back in Solva Memorial Hall very soon

Contact Kathryn:
01437 721283

Solva Cinema

With the easing of restrictions we are hoping to screen "Whisky Galore" (PG) in June. A remake of the 1949 film is set during WW2 when whisky was rationed. Scottish islanders plunder cases of whisky from a ship that is stranded on rocks, with a cargo of 50,000 cases! Look out for an update.

solvacinema@gmail.com / Lena: 07805 717556

Doors open: 7 pm and the Film starts: 7.30 pm



Solva Surgery

The surgery will be closed on the following Bank Holiday Mondays and patients should make sure that they have enough medication to last them over the long weekends:

Monday 3 May (May Bank Holiday)

Monday 31 May (Spring Bank Holiday)

THERE WILL ALWAYS BE A DOCTOR ON CALL WHEN THE SURGERY IS CLOSED

If urgent, please telephone 111 to access the GP Out-of Hours service.

A reminder to patients: we run our Covid Vaccination Clinics every Thursday and we have started calling in patients who are due their 2nd dose of vaccine. PLEASE DO NOT RING THE SURGERY for a vaccine appointment, we will ring you. The Covid clinics on a Thursday involve the whole team and therefore requests and collections for repeat prescriptions are not available. A doctor will be available for emergencies. Thank you for your patience and understanding during these challenging times.



Upcoming exhibition - Suspended Collaboration - a community-inspired artwork!

Ian and Maria of Haroldston House in Upper Solva will be creating a joint, large-scale porcelain installation within the Tower gallery at Oriel y Parc St Davids in May/June.

It will comprise a series of up to 84 porcelain panels, suspended from the Tower's ceiling space, featuring drawings, paintings, photography, text and found objects. The work will be inspired by the experiences of those living in and visiting the National Park, and will aim to demonstrate the diverse nature of the area and the impressions it makes on residents and visitors alike.

If you have any impressions of living in the Park - your favourite places, times of year, feelings etc. - that you would like them to incorporate into the work, please send a short email to studio@ceramartist.com, message them through Facebook, Twitter or Instagram @SuspendedCollaboration or just pop a note through their door.



Singing for Fun

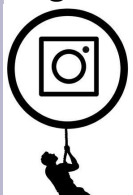
Tuesday 16 March will stay in the memory. It was the last time that a very small Singing for Fun group gathered on the pavement outside the Memorial Hall, giving an impromptu rendition to the passing traffic of "We'll meet again, don't know where, don't know when".

A magical moment. The virus has imposed many changes on us all and it has forced me to make the very difficult decision **to bring Singing for Fun to a close.**

I can't even begin to thank the many singers who turned up - in all weathers - to rehearse. It was incredible that we learnt as much music as we did! But we did and we helped numerous local and national charities in the process. I must pass on my sincere thanks to everyone who helped to make our Solva events happen and so successfully: raffle ticket sellers, post-gig refreshments particularly Tom; David; the wonderful singers and, just as important as everyone else, the incredible audiences, without whom we wouldn't have had a reason to perform. Everyone should give themselves a proper pat on the back. A superlative team effort. My sincere thanks to you all - Anne Hughes



Together for Change Update



TfC's "Ready to Go" project has started to work with the Llanrhian and Llangwm communities who are working with the team at Solva Care to develop their community projects. On Wednesday 12 May, there will be an online Masterclass on "Social Media for Communities" to develop their skills. Email: contact@tfc-pembrokeshire.org to book a place. The Master class on making podcasts went really well so expect to see Solva residents out and about with recorders at any time! On Thursday 20 May, there will be the second in our Forum series, this time a "Spotlight on Community Arts" and how the arts benefit the wellbeing of communities. Email us to find out more on contact@tfc-pembrokeshire.org

Solva Community Council

SCC meets every month via Zoom. Community Councillors also meet weekly in partnership with Solva Care to ensure community needs are met. Members of the local community wishing to raise a concern can contact the SCC Clerk Bruce Payne on 07890 987259.



Would you consider becoming a Solva Care trustee?

Are you interested in the work that Solva Care is doing? You may already be a volunteer, someone we have supported or a member of the community looking for a way to contribute to the general good. Change is on its way, following the Covid Crisis and we are looking to recruit trustees to respond in a positive way to whatever the future may hold. We hold trustee meetings every two months where we receive reports on our progress and finances. We consider future developments and plan our strategy to achieve the aims of Solva Care. If you would like to find out more, please contact Mollie Roach on 01437 721580 or Bruce Payne on 07890 987259.

Ysgol Penrhyn Dewi



The school is delighted to achieve the Peace Mala Bronze Accreditation Award, having demonstrated a commitment to placing the vision and message of Peace Mala's seven key areas at the heart of its values system.

Porthmawr activities

Throughout our time online Porthmawr has been dealing with some out of this world mysteries, as well as solving mysteries here on Earth. We looked at space art and abstract space art and we have designed and created our own model rockets. At the end of January we took part in the Big Garden Bird Watch (really we were hoping to spot aliens!). We created Solar System information texts for the Intergalactic Peace Force, to inform them about our Solar System and pupils have also created 3D alien spaceships.



The Pembrokeshire Youth Bank Grant Panel is pleased to announce that its new round of grant funding is now open and available to receive applications.



Pembrokeshire Youth Bank is a youth-led, grant-giving panel that provides grants to groups of young people aged 11 - 25 to develop and run their own community projects across Pembrokeshire. Have you a great idea for a local project? If so, please contact Sue Moses at sue.moses@pembrokeshire.gov.uk / 07798 924387 for information.

Shalom House

Shalom House has now reopened its shops in Fishguard and St Davids, albeit on a limited basis due to only having a small number of volunteers.

Currently our shops are open for the following hours:

Fishguard- 10am- 1pm Monday, Tuesday, Thursday and Friday

St Davids- 10am-1pm Wednesday, Thursday and Friday

Frame in Goodwick- to accept larger donations- 11am-3pm Monday



We are desperately appealing for more volunteers or fundraisers to help support our charity. If you are interested in offering some of your time, however little it may be, please do not hesitate to contact us: info@shalomstdavids.org / 01437 721344 or by going into to one of the shops. We greatly appreciate your help which allows us to continue to care for those with a life limiting illness. Thank you

Help with school work?

Does your child need a little extra help to catch up with school work after this Covid year? Are you a former teacher who may be able to provide free tuition?

4

Please contact Solva Care trustee Enid Morgan on 01437 721116



Solva Care - Connecting our Community

Do you, or does someone you know, need assistance with:

- Picking up medication from the surgery or pharmacy
- A lift to the surgery or post office
- Dog walking
- Befriending (someone to talk to on the phone)
- Shopping/picking up the paper
- Info/support to access services.



Solva Care is here to offer friendly, neighbourly support and has many local volunteers who are happy to give you a hand - just give us a call.

Or, if you would consider becoming a volunteer please contact:

Lena Dixon, Coordinator: 07805 717556 Email:

Tomatoes for a good cause

Growing your own tomatoes is simple and just a couple of plants will reward you with plenty of delicious tomatoes through the summer. Plants are available for sale in Lower Solva, with all proceeds to Parc y Capel.



Solva Care Grant Awards 2021

The trustees are delighted to announce that Solva Care has awarded grants to five community-based organisations to help support local projects:

- A Solva AFC. £750 - Defibrillator (Welsh Hearts).
- B Solva Community Council. £500 - Wi-Fi Project.
- C Solva Clubhouse. £300 - NHS, Social Care & Frontline Workers day 5th July 2021.
- D Solva Coastal Allotment Project. £700.
- E The Edge Festival. £250 - Fencing and gate project.



Newsletter Round Anyone?

Volunteer needed for the monthly delivery of Solva's newsletter to Bryn Seion. If you can help out please email Vicky at vkbarke39@yahoo.co.uk or phone 01437 721224. Thanks, Vicky



Friday Club will resume on Friday 21 May 2-4 pm in the football club clubhouse, all being well. All welcome to join our activities, chat, coffee/tea and cake! Any questions or for assistance with transport, please call Lena on 07805 717556 or Lesley on 07722 091664.

Solva Community Seed Share / Rhannu Hâd yn Gymunedol yn Solfach

Our community seed share scheme has started! The box is located in the Milking Parlour at Bay View Stores courtesy of Mount Farm and is being well used. Thank you to everyone who has donated and taken some seeds - keep your donations coming!



RHS Top Gardening tips for May

As bulbs fade and herbaceous borders grow in leaps and bounds, it is now clear that summer is approaching. Sowing and planting out bedding can begin, depending on regional weather variations, and you can take softwood cuttings. It's also time to get back into the lawn mowing regime, as the lawn will be loving the warmer temperatures this month brings.

- Watch out for late frosts. Protect tender plants
- Earth up potatoes, and promptly plant any still remaining
- Plant out summer bedding at the end of the month (except in cold areas)
- Water early and late to get the most out of your water, recycle water when possible
- Regularly hoe off weeds
- Open greenhouse vents and doors on warm days
- Mow lawns weekly
- Check for nesting birds before clipping hedges
- Lift and divide overcrowded clumps of daffodils and other spring-flowering bulbs
- Watch out for viburnum beetle and lily beetle grubs

garden
time



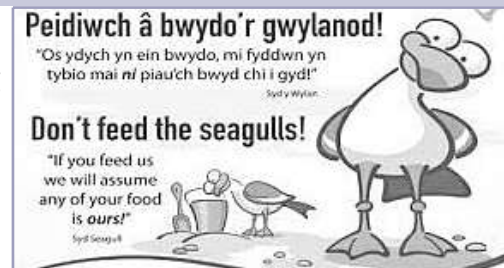
RNLI ST DAVIDS – 3 April

Byron Grey, a volunteer crew member at our flanking station Little and Broad Haven RNLI, passed by St Davids RNLI today as he undertakes the massive challenge of running the full Pembrokeshire Coast Path. He is hoping to complete the incredible 186 miles from Amroth to St Dogmaels in just 7 days, which amounts to around a marathon a day! The aim of the run is to raise money for the RNLI and local community interest company Get The Boys A Lift. If you would like to learn more and donate please follow the link: gofund.me/a4cd57e6



Problem Seagulls – DO NOT FEED THEM!

Feeding seagulls can result in over-population and the birds becoming a nuisance as they quickly learn where there are ready sources of food. They may even become aggressive to people if they realise that members of the public are likely to have food. More birds mean more mess and bird poo can attract vermin and spread disease. All in all, it is better for both people and seagulls if we refrain from feeding these seabirds. They do not prosper on a diet of bread, chips and other scraps and quickly become a serious nuisance when looking for their next meal. The RSPCA believe gulls may suffer from "Angel Wing" as snacks are high in calories but otherwise of poor nutritional value. Angel Wing is a syndrome which primarily afflicts aquatic birds. The final joint in the wing becomes twisted, causing the feathers to point out instead of lying against the body. The syndrome is incurable and it is thought the main cause is poor nutrition. In Solva the quay is an especially vulnerable area where locals and visitors alike are guilty of feeding seagulls and thus, inadvertently, training the birds to attack for food. **Please do not feed them.**



The Bug Farm

The farm plans to re-open to the public on Thursday 20 May 20. All outdoor areas will be open and Grub Kitchen will serve take-away food. Hopefully, by that time, the indoor areas and Grub Kitchen indoor dining will also be able to re-open as usual - Welsh Government guidance permitting.

The Coast Allotment Project

The project is gathering pace thanks to the easing of lockdown. Having secured some funding we've started on the boundaries. Thanks to Ian Griffiths of Celtic Camping for the removal of the old hedge and waste off site, Andrew Davies of AJD Landscaping for the supply of posts and building of the fence, with help from volunteers and committee members and to Richard Thomas fencing for supplying the wood. The next stage of the project is to clear the ground and remove the old blackthorns at the front of the site to make way for a new fence, which will not only improve the visual quality of the site but it will also improve the road access as well. If you'd like to get involved with the project and volunteer some time to help clear the felled tree branches and hedging please drop me an email on coastsolva@gmail.com. We still have plots available if anyone would like to register their interest.



Seedlings Appeal

There is a small public garden by the bridge in lower Solva. It is tended by volunteers and their efforts have paid off with a lovely spring display. If you have any surplus seedlings to help the garden continue to look good, please drop them off to 27 Prendergast.



St David's church at Whitchurch

Please be aware that loose tiles are falling from the roof making it dangerous for the public to enter. Also be aware of potholes in the old cemetery making it hazardous to walk round. Please take care.



Solva Harbour Society

From Saturday 1 May use of the Trinity Quay slip will be limited to members with a current boat sticker. The public may use the Sand Quay slip for launching subject to payment of a launching fee. All vessels including paddle boards must pay a fee to launch or recover. Members must display a Membership sticker on their car and vessel (on transom). Non Members are not permitted to park on the Quay under any circumstances. Covid safety and social distancing must be observed at all times.



Polystyrene boxes for seafood

Jono of Solva Seafoods is again looking for polystyrene boxes which are in very short supply and difficult to source, any offers gratefully received. Jono is willing to collect. Contact jono@solva.co.uk

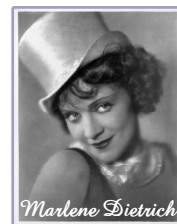
Solva Sailing Club

The club held a sail training session in April (for a single household), so already has managed more time on the water for young sailors than in 2020. It was fantastic to see the Topper and Optimist out in the harbour again. Would your child like to sail? The club hopes to run a taster session for beginners and improvers in the early summer. Please "like" or message the club facebook page to keep in touch with plans. Via Zoom, the committee discussed joining Bart's Bash in September, a "cruise in company" to Fishguard, plus club room maintenance, insurance, RYA certification and membership. Anyone with an interest in sailing, or just a love of the water in general is urged to join the club. Annual membership is £12 and can be paid by BACS or cash to Bella at Window on Wales. Contact club secretary Helen for details: helenghughes@outlook.com - see you soon, on the water!



Days gone by - Cinema-going in Newgale.

In August 1940 I was staying with my Grandparents in Newgale: the peace only disturbed by occasional gunfire out at sea. Overnight a Company of soldiers appeared, pitched their tents and requisitioned a few empty houses. They erected a cookhouse opposite the Sands café. At low water steel railway lines were embedded upright in concrete in the beach to prevent aircraft or glider landings. Rolls of barbed wire were placed along the landward side of the road and land mines laid. A sandbagged gun emplacement was constructed on the cliffs and 14 square concrete bollards placed near the bridge. They still remain. As an 8 year old I watched with interest and was overjoyed when invited to see a film in the cookhouse. I recall the film was "Blue Angel" starring *Marlene Dietrich* the details of which I neither understood then nor remember now. I guess there are few others still around who went to the cinema in Newgale. Solva, in those days was a far off land. Michael Probert



The Welsh Blood Service aims to have least 7 days of each blood type at all times to help patients in need across Wales. Can you help us by giving blood at Haverfordwest Rugby Club on Thursday 6 and Friday 7 May? Visit <https://wbs.wales/GiveBloodSolva> to book a lifesaving donation.



A Blast from the Past - the white area is ice in Solva harbour in 1982!



Thanks to Buzz Bland for the photo

Job opportunity at Solva Clubhouse

The Role: Facility Cleaner

Pay Rate: £10 per hour - part time with variable hours.

Duration: Ongoing (subject to reviews).

An opportunity has arisen for a facility cleaner at Solva Clubhouse. The post holder will carry out cleaning duties ensuring appropriate COVID-19 rules are strictly adhered too for cleanliness and hygiene. Cleaning duties will be required after every booked session. Application by letter or email to brucepayne241@gmail.com or ifor.thomas@gmail.com



Solva Seafoods



Fresh Crab,
Lobster & Wet
Fish Caught and
Prepared Daily.

T: 07773 846 560
Or 01437 729169
Website: www.solvaseafoods.co.uk

Solva Caterers

Fully Licensed Bar Available for Weddings, Private Parties or any event. The perfect Wedding Venue also available with stunning views across St Brides Bay.

For all Enquiries call Jonathan Voyce on
07773 846560 or email: jono@solva.co.uk

Solva Edge Festival

3 DAYS OF LIVE MUSIC, POETRY,
LITERATURE, TALKS, GREAT FOOD
AND DRINK



29TH - 31ST JULY 2022

MamGu welshcakes

Homemade Welshcakes
Welsh Inspired Dishes
Breakfast, Lunch,
Cakes & Drinks

20 Main Street, Solva
01437 454369

Basalt & Dune

HOMEWARES * JEWELLERY
ACCESSORIES * PAINTINGS * PRINTS
SKINCARE * CARDS & GIFTS

OPEN TUESDAY - SATURDAY
11am - 4.30pm

4 Ty Eurvil, Maes Dyfed, St Davids, SA62 6SR
basaltdune.co.uk

SOLV

HARBOUR SOCIETY
'A Community Benefit Society'

TRINITY QUAY SOLVA
Tel Chairman: 07494 853642
Tel Harbour Master: 07485 655754
Tel Trinity Quay: 01437 721725

Hosting - Design - Social Media

webzer

Unlimited Webhosting
for £2.99 a month!

0800 6121 051
www.webzer.co.uk
SEO - Ecommerce - IT Services

THE HARBOUR INN

01437 720 013

THE HARBOUR INN OFFERS GOOD FOOD WITH
THE OPTION OF A DAILY SPECIALS BOARD,
FRIENDLY STAFF AND A WARM WELCOME.

A DOG FRIENDLY PUB ON THE SEAFRONT OF SOLVA.



the MOUNT

DAIRY FRESH MILK

solva woollen mill

we are open all year
Monday to Friday
9.30am to 5.30pm
Also July to September
Saturday 9.30am - 5.30pm
Sunday 2pm - 5.30pm
www.solvawoollenmill.co.uk
01437 721112
waterwheel shop tearoom

The Ship, Solva 01437 721528

New home cooked menu
Great drinks offers
Open log fire
Wed quiz 8 pm
with jackpot raffle
BOOK NOW!



Follow:  
[@theshipinnsolva](https://www.facebook.com/theshipinnsolva)

Mathias Home Hardware

01437 720340

Mathias Home Hardware is a traditional hardware shop. We have everything for any DIY, home, garden or camping needs.

71 Nun Street, St Davids SA62 6NU

Café on the Quay

Trinity Quay, Solva Harbour

Fine Italian Coffee
Homemade Cakes and Solva Crab
Sandwiches & Local Ice Cream

01437 721725

Enjoy the Solva sunshine sitting on the Quay...
Bring the family crabbing! We sell bait and lines.

Menevia

BEAUTY & SPA

ENJOY A WIDE VARIETY OF BEAUTY
SPA AND COMPLEMENTARY THERAPIES
IN A RELAXING FRIENDLY PLACE

42 GOAT STREET ST DAVIDS
CALL US 01437 454 114

BFS

PLUMBING & HEATING
GAS, OIL, LPG
DOMESTIC, COMMERCIAL, CATERING

01437 741 791
paul@barnsteadfiresprinklers.co.uk

RAUL SPEEK GALLERY

Fine Art, Artist's Studio, Photographs, Prints
Art Workshops, Talks, Music, Jewellery, Gifts
Music & Tapas Nights, Pop-up Café

The Old Chapel, Main Street, Solva SA62 6UU
Tel: 01437 721907
e: heather@heatherbennett.co.uk
www.raulspeek.co.uk www.heatherbennett.co.uk