

## Bingo at the Hall

A family Bingo evening at Solva Memorial Hall.

Friday 15 March, doors open at 6pm. Bring your family, your own choice of beverages, nibbles and your dabbers! All proceeds for the upkeep of the Hall.

FEB 2019

No. 122

## Solva Duck Race

The race will be staged on Easter Monday 22 April starting at 3 pm. Please support this annual, much loved, fundraiser for the Hall.



## Solva AFC

A change from the car boot to a table top sale: **Table Top Sale**

to be held at the clubhouse on the first Sunday of every month starting Sunday 3 Feb.

- Doors open at 11am.
- £10 a table.
- Refreshments available.

Come and sell your pre-loved and unwanted items and help raise funds to support your local junior and senior football teams. To book a space call the club secretary Medi George on 07954 241589 or email [solvaafc@gmail.com](mailto:solvaafc@gmail.com).

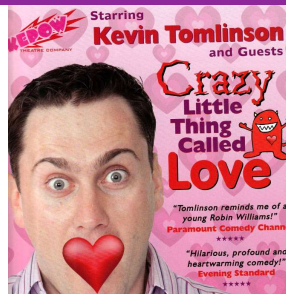


## "Crazy Little Thing Called Love"

Many of you will remember Kepow Theatre and Kevin Tomlinson in The Seven Ages of Man. He also appeared at the Edge Festival a few years ago. We are pleased to welcome him back to Solva for this show appropriately close to St Valentine's Day.

The show is suitable for 6 - 106 year-olds and will certainly brighten up the grey February nights. Our thanks as always to Wales Arts Council and their Night Out Scheme. The show is at Solva Memorial Hall on Saturday 16 February at 7.30pm.

Tickets: Adults £10 and concessions: £5 (children, students, unemployed and disabled), available from 01437 721374 or 07970 614233.



## "Men's Shed"

A number of people in Solva are thinking of setting up a 'Men's Shed', possibly on Tuesday afternoons in the football Clubhouse. If you are interested and would like more information, please contact Robin Tyler on 01437 721588 or 07779 240268. Men's Sheds are community spaces for people to connect, converse and create. The activities are often similar to those of garden sheds, but for groups to enjoy together.



## RNLI St Davids

It is the 150th anniversary of the RNLI placing lifeboats at St Davids and at Solva (which closed in 1887). To mark this year we will be posting a picture or story from the station archives each week throughout the year on our facebook page. Here's one from 1868 before the first boat-house had been built!



**The Royal George**  
SOLVA  
PUB & RESTAURANT

Visit us on

**New Italian Restaurant Menu**

**FREE PARKING!** Tel: 01437 720002

Thursday is Ukulele night from 8pm!  
Barry's Fun Quiz - 9pm Sundays  
Everyone welcome.

Advertise your company, service or product here

01437 720111  
[newyddionsolfach@gmail.com](mailto:newyddionsolfach@gmail.com)

07837 995910  
[info@llanungar.wales](mailto:info@llanungar.wales)  
[www.llanungar.wales](http://www.llanungar.wales)

**LLANUNGAR CARAVAN & CAMPING**  
Solva, Pembrokeshire SA62 6UA

For All Your **Home & Garden**

**MAINTENANCE MATTERS**

Call T: 01437 720179  
Dean M: 07811 151678

**FREE QUOTES FULLY INSURED**  
**LOCAL & RELIABLE**

## Solva Surgery

Over the next 3 months, Solva Surgery will have final year Medical Students from the University of Swansea on placement. Patients may be offered supervised appointments with them.

## Solva WI

The Business part of the January meeting included distribution of the Programme for 2019 with its varied and interesting selection of Speakers. The committee had made a decision on our approach to the GDPR Policy, with which members agreed. The Christmas party and meeting was much enjoyed as was dinner at the Cambrian. Arrangements for a Swim & Lunch at Croft Park and a trip to the Botanical Gardens were also finalised. It has been decided that the committee will only meet every 2 months which means events etc. have to be organised in advance.

**The Annual Pancake Coffee Morning** will take place on Tuesday 5 March, from 10.30am till 12 noon, in the Memorial Hall. Please come and support - proceeds will be for Shalom House. Following the tea break there was lively discussion over the 6 Resolutions, the majority of which were on women's health matters. Each member then voted for their choice and these will be sent to PFWI to decide which ones are put forward at the National WI Annual General Meeting.



### Thursday Coffee Morning

A reminder that coffee, tea, biscuits (and sometimes home-made cakes) are always available on Thursday mornings 10.30 - 12 noon in Solva Memorial Hall. In addition to a warm welcome there is also a mini lending library. We have a good stock of all types of fiction including crime, thrillers and detective stories which are very popular. Some large type editions are also available. The non-fiction section covers some excellent reference books, animals, birds, gardening, travel, poetry etc plus many interesting biographies. For anyone interested in taking up knitting we have lots of patterns and some sizes of needles. Also a few dress patterns. All these things are so expensive these days that this is a good opportunity to practise free of charge. In April the coffee morning will have been welcoming residents and visitors for 15 years, so come and join us - the team: Tom, Naomi, Celia, Christine, Pat, Moira, Ann, Myra, Lynne, Janet, Jayne and CA. All welcome.

### Solva Heritage Society

Work is underway for our first Heritage Trail Information Leaflet. A generous gift from The Edge Festival will help with the first print run. The launch of the publication is planned for the March/Easter meeting, details of which will be circulated soon.



### Memorial Hall 100+ club

1st	£50.00	number 35	Bella Prickett
2nd	£40.00	number 5	Mo Bland
3rd	£30.00	number 106	Josie Morris

### Parc y Capel 100 club

1st	£50.00	number 28	Gerry Monte
2nd	£30.00	number 55	Myra Parkinson
3rd	£20.00	number 24	Emma Iles

**Solva WI welcomes new members and visitors. We meet most months in Solva Memorial Hall on the 2<sup>nd</sup> Thursday at 2 pm**  
**Contact Kathryn:**  
**01437 721283**

## SOLVA COMMUNITY CINEMA

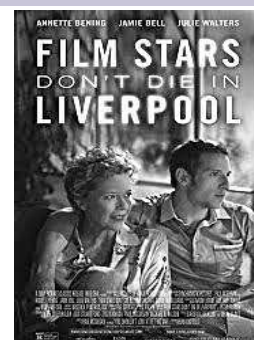
Presents:

**Thu 7 Feb: "Film Stars Don't Die in Liverpool" (15)**

Adults: £5.00; Under 18's: £3.50

Doors open: 7pm / Show: 7.30pm

Further films to be announced soon.



## Ysgol yr Eglwys yng Nghymru Penrhyn Dewi Official Opening

Friday 30 November saw the official opening of Ysgol yr Eglwys yng Nghymru Penrhyn Dewi at the Dewi Campus. A plaque commemorating the event was unveiled by Eluned Morgan, Welsh government minister for Welsh language and lifelong learning. The Baroness Morgan was welcomed to the school by council chairman Aden Brinn and our Headteacher David Haynes.



Musical items were performed by the cathedral choristers and the new school choir.

Children from all three campuses were present to celebrate the opening, which was attended by distinguished guests from far and wide. Pupils were then entertained, and participated in, an "Open Mike" session led by local Mayor Mike Chant whilst Mr Haynes and the Head Prefects took the guests on a tour of the Dewi Campus. It was a marvellous occasion, marking the beginning of a new chapter for education on the St Davids Peninsula.

## Solva Community Council

SCC will meet on Wednesday 6 February at 7pm in Solva Memorial Hall. Items on the agenda:



- Solva Community Tourism Initiative (Please note: commencing at 6pm)
- War Memorial - Thinning of trees
- Whitchurch Churchyard
- Play & Skate Parks
- AFC project
- Solva Fireworks Display 2019
- Solva Path Project
- Finance report
- Planning applications
- Local concerns (Sewage problem)

Members of the local community are welcome to attend. Please let the Clerk (Bruce Payne 07890 987259) know if you wish to come along.

## Church in Wales Services

3 Feb 9.30am - St Aidans, Solva. Holy Eucharist

10 Feb 9.30am - St Aidans, Solva. Holy Eucharist

17 Feb 9.30am - Whitchurch. Holy Eucharist

24 Feb 9.30am - St Aidans, Solva. Holy Eucharist

Full service list for all Local Ministry Area churches can be found at St Aidans.



A warm "Thank you" to all the creative supporters of the Christmas Tree Festival which provided a colourful start to our Celebrations. The Winner was "**A Carpenter's Christmas Tree**" with the WI "Tree of Remembrance" and "A Holey Tree" as joint second.

An entertaining evening, with the popular Goodwick Community Brass Band, brought the Festival weekend to an end and set the mood for the Christmas season.



## Solva Intergenerational path project

Discussions with land owners are ongoing but the Community Council is optimistic that a suitable route can be established that will be wheelchair friendly and allow users to travel from the top of the village to the bottom in a safe way.

### Memorial Cross

Options are being explored to create views through from the cross to the sea. Long-standing members of our community remember when the slope down to the sea was tree free and covered with flowers in the spring. We are not trying to recreate that landscape as time has moved on and the trees that have grown and achieved maturity are valued by the village and the rooks.



We do believe, however, that by thinning out some of the immature trees, and lopping branches that are so low that they touch the slope and become diseased, a vista could be created that would allow visitors to see down into the harbour, and, looking up, see the cross. A vital visual connection could be restored.



**Solva Business Group** will hold an AGM on Monday 18 February at 7.30pm in The Royal George. All welcome.

**Oriel y Parc** - Tower - Artist in Residence - Raul Speek "Artist interface" from 1 Feb - 28 Feb

### Parc y Capel

The Parc y Capel Committee and the members of Capel Ucha' wish to thank all who attended their Christmas activities – the Christmas tree event in the Memorial Hall and the carol service at Capel Ucha'.

On both occasions donations were accepted on behalf of UNICEF.

The former event raised £113.88 and the later £175.60. A cheque for £290 was forwarded to the charity from which an acknowledgement has been received.

Again, many thanks for your generous donations to such a worthy cause.



unicef

### Solva Open Gardens

After last year's success, it's hoped to hold another open gardens event this year. All sizes and types of gardens welcome, from the hanging gardens of Babylon to an overgrown bramble patch project in progress (like mine!). The wider the variety the better the event. Likely to be held on a weekend in early June, date yet to be finalized. For info email Vicky at [vkbarke39@yahoo.co.uk](mailto:vkbarke39@yahoo.co.uk) or Tel. 01437 721224 to leave a message and I'll get back to you.



### Welsh Blood Service



Welsh Blood Service

At present only 3 % of the population donate blood. We need all the help and support of

communities to make the collection days a success. The blood service needs to collect 480 units every day to supply the 19 Welsh Hospitals in Wales and at times this can be extremely challenging for us. If you wish to donate: Phone 0800 25 22 66 or online [www.welshblood.org.uk](http://www.welshblood.org.uk).

**Mamgu Welshcakes** - reopens on Tuesday 12 February. They will also be holding a Welsh themed evening on St Davids Day, Friday 1 March. Tickets on sale from 12 February.



**Oriel y Parc** - \*New\* Dragon Lantern Parade - Saturday 2 March starting at 5.30pm. Please join local school children, community groups and businesses, as they parade through the city with their hand made lantern displays, with 948 Squadron Air Corps Training band providing the musical beat. Please come along and cheer the Dragons!



### Dog fouling

Once again phantom dog owners have let their pooches litter our village, without bagging it and binning it. Recent occurrences have been on the football fields, along Maes yr Eglwys and in the surgery grounds!

What is the matter with these irresponsible dog owners?

Here's a few facts: Toxocariasis is an illness found in humans that occurs when they are infected with parasitic roundworms, originating from either the fecal matter of dogs and foxes (*Toxocara canis*), or cats (*Toxocara cati*). Although most people might display symptoms similar to the flu, there are certain instances, where the illness can turn into a more severe form known as Ocular Toxocariasis, that has the potential to cause blindness. Although Toxocariasis can infect humans, the most common victims are actually children, for two reasons:- one being that children have a weaker immune system than adults, and the other being that they are the ones that tend to place their hands on the ground and in the dirt while playing outside. Take control and clean up after your pet.



**SOLVA CARE CHARITY - Charity number: 1172873 - [contact@solvacare.co.uk](mailto:contact@solvacare.co.uk)**

**Lena Dixon, Co-ordinator : 07805717556**

**Lesley Robertson-Steel, Participation & Integration Partnership Assistant: 07722091664**

**News:** Solva Care is now a registered charity and its new title is Solva Care Charity.



We held a Community Event in the Memorial Hall on 27 November, with stalls from, and talks by, various organisations and community groups such as the Fire Brigade, National Parks, Paul Sartori and many others. Lesley Robertson-Steel talked about Direct Payments for Social Care. The purpose was to collect useful information under one roof.

Despite the weather, which was awful, we were happy with the attendance and may repeat the event at a future date.

**Direct Payments for Social Care** - If you are receiving Social Care or you are thinking of applying for Care, it is important that you have information on the Direct Payment option. Direct Payments may allow you more choice and better care. If you would like to know more, please contact Lena or Lesley (see above).

**Developing Solva Community Care-Potential for Care Co-operative.** Solva Care Charity would be interested in hearing from carers who are available to work as self employed home workers as part of the Direct Payments process in Solva and the local area.

**Food bank in Letterston** - If you know of someone in our area who is struggling financially and is finding it difficult to feed their family, please pass on the following information. There is a Food bank at Letterston Church Hall, which can help. It is open from 11am-2pm on Thursdays.

Vouchers can be obtained from any organisation that helps people - Social Services, Doctors' surgeries, School head teachers, etc. If you would like to donate food, there is a collection point at St Davids Cathedral where your gifts would be welcomed.

**Local trades people** - We are often asked about how to find reliable local people: gardeners, cleaners, window cleaners, builders, odd job men/women. If you work in the area and would be happy to be put on our list, please contact Lena (see above contact details).

**A Better Place** - The Older People's Commissioner for Wales is currently determining the work she will undertake over the next 3 years to improve the lives of older people. She wants the options and experiences of as many older people as possible to help her work. You can respond on line at: <http://bit.ly/OPCWEnglish> or pick up a paper copy from the Hall or call Lena.

**Tuesday Outings:** 12 Feb, 26 Feb, 12 and 26 March have been allocated to Solva Care for visits to the VC Gallery, Haverfordwest. Solva Care is looking for Art lovers or shoppers who would like to join us. The sessions provided by VC Gallery are free and a Bus y Bobl will be leaving from the Mosaic Steps at 10 am and from Haverfordwest, return journey, at 12.30 pm, on the above dates. Our first visit was extremely successful, enjoyable and productive and we are looking forward to the next. Join us – volunteers, clients or anyone who would like to go shopping. For information contact: Sandra 01437 721450 or Lena 07805717556



**Friday Club** - The new term started with an elusive performance by local magician Tom Thumb. Everyone was mesmerized by the magic. This was followed by Helen's gentle movement. (Helen will now be helping us every week). Her expertise ensured practical, safe and mostly seated exercises accessible to all. On Friday 18 Jan Trustees Carol-Ann and Fran presented a Beetle Drive with reminiscences of the history of Solva. Handouts and photos revitalise past memories and enhanced stories with many recollections being inspired by anecdotes. Great enjoyment was had by all. Please see "What's On" for further Friday club activities.

## Solva Regattas

Raft Race - Friday 31 May - entries: 3pm, construction: 4pm race starts 5pm.

Solva August Regatta – Sunday 11 August, entries: 11am races starts 1pm.



### Treasure Hunt report

160 competitors made the 2019 New Years Day Treasure Hunt very successful. Starting at 10.15am, after a welcome port wine and mince pies from Gwyn at Bay View Stores, teams then scoured the village for clues and finished at the Ship Inn.

**The winners:** 1<sup>st</sup>: “The Ombudsmen” 2<sup>nd</sup>: “Evans Above” 3<sup>rd</sup>: “The Village People”.

Dai Ball and Jim Young would like to thank - Gwyn, Barry & Mary, Café on the Quay, Harbour Inn, Simon & Kath, Wendy, Rebecca and Elun for all their help. £230 was raised for charity.

Thank you also to everyone who took part.



### Edge News

The next Edge Fundraiser will take place at St Davids Rugby Club on Friday 15 February at 7pm. We continue our winning formula of live racing with a chance to win big if you back the right donkey. Come along and have fun whilst supporting the Edge Festival. Entry is £10 with a bar provided by the rugby club and food thrown in to make for a super evening of entertainment. Please join us!

Preparations are well underway for the next festival that will take place on 2/3/4 August. The headliner for Saturday night is an amazing Lady Gaga tribute. Her show includes dancers, a big screen backdrop and numerous costume changes. Donna Marie is second only to Lady Gaga herself. She will be part of a programme that will range from hard rock to a choir: more details to follow. The Swim to the Edge is almost sold out and this year there will also be a Run to the Edge for the first time. Festival tickets are already on sale. If you book early you will only pay £35 for a whole weekend of entertainment. No other festival offers such value, and remember, every penny of profit goes back into our community.

The Edge Festival is now a registered charity. At the second attempt, the Charities commission has accepted that the Edge Festival qualifies for charitable status. This is a big step forward for the festival, enabling us to attract more funding. To deal with alcohol sales the Solva Gin company has been established and the sales of our iconic gin are going well. Small bottles are now available which make super gifts, check with Josh in the Harbour Inn if you want to buy a bottle.

### Solva Boat Owners Association



- The SBOA AGM will be held in the Back Room of the Ship Inn, on Saturday 9 March commencing at 10.30am. All members welcome.
- The lift-in date is set for Monday 8 April.
- No date has been notified for repairs to the Quay Road. The application to close the road has lapsed and has to be re-applied for.
- Due to low response the annual function to Crug Glas is cancelled. All monies received will be returned.



### The Royal George

Thank you everyone who took part in the Royal George Xmas Draw. Congratulations to the winners, and to all the participants who helped raise the £101 towards the Solva Fireworks Fund.

## WHAT'S ON

1-28 Feb	Oriel y Parc Artist in residence - Raul Speek	Oriel y Parc Tower	All day
Fri 1 Feb	Friday Club - Span Arts workshop	Memorial Hall	2pm-4pm
Sun 3 Feb	Solva AFC Table Top Sale	Clubhouse	11 am
Wed 6 Feb	Solva Community Council meeting	Memorial Hall	7pm
Thu 7 Feb	Solva Cinema "Film Stars Don't Die in Liverpool" (15)	Memorial Hall	Doors open 7pm
Fri 8 Feb	Friday Club - Craft group and music quiz	Memorial Hall	2pm-4pm
Tue 12 Feb	Mamgu Welshcakes reopens	Mamgu shop	10am
Tue 12 Feb	Solva Care visit to VC Gallery and Haverfordwest	Mosaic steps	10am
Fri 15 Feb	Friday Club - Brenda's musical movement	Memorial Hall	2pm-4pm
Fri 15 Feb	Edge Festival Fundraiser "Donkey Derby"	St Davids Rugby Club	7pm
Sat 16 Feb	Kepow Theatre: "Crazy little thing called love"	Memorial Hall	7.30pm
Mon 18 Feb	Solva Business Group AGM	Royal George	7.30pm
Fri 22 Feb	Ifor & Gill's sing-a-long and Helen's movement class	Memorial Hall	2pm-4pm
Tue 26 Feb	Solva Care visit to VC Gallery and Haverfordwest	Mosaic steps	10am
Fri 1 Mar	Mamgu Welshcakes - Welsh themed evening	Mamgu shop	7pm
Sat 2 Mar	St Davids Dragon Parade	Oriel y Parc	5.30pm
Tue 5 Mar	WI Pancake Day Coffee Morning	Memorial Hall	10.30am-12noon
Sat 9 Mar	SBOA AGM	Ship Inn	10.30am
Fri 15 Mar	Bingo at the Hall	Memorial Hall	6pm
Mon 22 Apr	Solva Duck Race	Lower Solva	3pm

## REGULAR EVENTS

M	10-11am	Solva Tai Chi	Memorial Hall	Fey	01437 720889
M	10.30am-12.30	Coffee & Chat	Capel Ucha	Grace Davies	01437 721533
M	2.30pm	Welsh Conversation Class	Capel Ucha	Grace Davies	01437 721533
M	7-8.30pm	Singing For Fun	Memorial Hall	Anne Hughes	07742 576031
M	7-9pm	Solva Youth Club	Football Club		
T	2-3pm	Solva Care Gentle Fitness	Memorial Hall	Lena Dixon	07805 717556
T	TBA	Men's Shed	Football Club	Robin Tyler	01437 721558
T	6.30-7.30pm	Fit4Life	Memorial Hall	Helen Patel	07920 197317
W	12.30pm	Senior Citizens' Lunch Club	Memorial Hall	Jane Pascoe	01437 721544
W	2-4pm	Solva Craft Club	Football Club	Maggie	01437 720478
W	6pm	Youth Rowing Club	Trinity Quay	Steve Probert	07970 063074
W	8pm	Quiz at the Ship	Ship Inn		01437 721528
W	9pm	Dai Ball's Quiz/Open the box	Harbour Inn		01437 720013
T	10.30-12 noon	Coffee Morning / Mini library	Memorial Hall	Carol Ann	01437 721374
T	2pm	Solva WI (2 <sup>nd</sup> Thurs of month)	Memorial Hall	Kathryn	01437 721283
T	2.30pm	Bible Study Group	Capel Ucha	Grace Davies	01437 721533
T	6pm	Rowing Club	Trinity Quay	Steve Probert	07970 063074
T	7.30pm	Solva Cinema (1st Thu/month)	Memorial Hall	Lena Dixon	07905 717556
F	10-12 noon	Solva Care "Drop-in Surgery"	Solva Surgery	Lena Dixon	07805 717556
F	2-4 pm	Solva Care "Friday Club"	Memorial Hall	Lena Dixon	07805 717556
Sn	10.30am	Tabletop sale (1st Sun/month)	Football Club	Medi George	07954 241589
Sn	10.30am	Church service	Capel Ucha	Grace Davies	01437 721533
Sn	9.30 / 10.30am	Church in Wales services	St Aidans/Whitchurch	See page 3	
Sn	8.30 pm	Barry's Fun Quiz & Raffle	Royal George	Barry	01437 720002

### Gardening & Wildlife Club

Roch Village Hall and venues 2 - 4pm  
1st Thursday in the month (April - December)  
Contact: Christine Martin  
01437 710048 / eden@christinemartin.plus.com  
**Phone for events and outings - All welcome**

### The Bug Farm & Grub Kitchen

Thursdays 21 & 28 Feb 12 noon - 3pm  
**Drop-in Mosaic Workshops**  
Get creative with local mosaic artist Maddie Janes  
07966 956357 / info@thebugfarm.co.uk



**Solva Seafoods**  
  
 Fresh Crab,  
 Lobster & Wet  
 Fish Caught and  
 Prepared Daily.  
 T: 07773 846 560  
 Or: 01437 729169  
 Website: [www.solvaseafoods.co.uk](http://www.solvaseafoods.co.uk)

**Solva Caterers**  
 Fully Licensed Bar Available for Weddings, Private Parties or any event. The perfect Wedding Venue also available with stunning views across St Brides Bay.  
 For all Enquiries call Jonathan Voyce on  
 07773 846560 or email: [jono@solva.co.uk](mailto:jono@solva.co.uk)

  
 PLANT A GARDEN, GROW  
**HAPPINESS**  
[www.daisybusgardens.com](http://www.daisybusgardens.com)

  
**L M Griffiths & Co**  
 Chartered Certified Accountants  
 Pleased to be able to assist  
 Solva Community Council  
 Free initial consultation contact  
 Tina Rogers or Mike Harries  
**01437 763454**  
[info@lmgriffiths.co.uk](mailto:info@lmgriffiths.co.uk)

**Café on the Quay**  
 Trinity Quay, Solva Harbour  
 Fine Italian Coffee  
 Homemade Cakes and Solva Crab  
 Sandwiches & Local Ice Cream  
**01437 721725**  
 Enjoy the Solva sunshine sitting on the Quay...  
 Bring the family crabbing! We sell bait and lines.

**THE HARBOUR INN**  
**01437 720 013**  
  
 THE HARBOUR INN OFFERS GOOD FOOD WITH  
 THE OPTION OF A DAILY SPECIALS BOARD,  
 FRIENDLY STAFF AND A WARM WELCOME.  
 A DOG FRIENDLY PUB ON THE SEAFRONT OF SOLVA.

**SOLVA**  
 BOATOWNERS  
 ASSOCIATION  
**TRINITY QUAY SOLVA**  
[info@solvaboatowners.co.uk](mailto:info@solvaboatowners.co.uk)  
**Tel Sec 01437 721220**  
**Tel HM 01437 721725**

**2, 3 & 4 August 2019**  
**The Edge Festival**  
 SOLVA - WALES  
 JOIN US FOR A CELEBRATION OF THE ARTS  
 LITERATURE - MUSIC - SPORT  
 AND WONDERFUL FOOD!

**Hosting - Design - Social Media**  
  
**Unlimited Webhosting**  
**for £2.99 a month!**  
**0800 6121 051**  
[www.webzer.co.uk](http://www.webzer.co.uk)  
**SEO - Ecommerce - IT Services**

**MICHAEL G FAULKNER**  
 Solva based  
**Traditional Builder**  
 SPECIALISING IN LIME WORK AND  
 ERADICATING DAMP FROM OLD BUILDINGS  
**07788 694 324**  
[www.michaelgfaulkner.co.uk](http://www.michaelgfaulkner.co.uk)

**solva**  
 woollen mill  
 we are open all year  
 Monday to Friday  
 9.30am to 5.30pm  
 Also July to September  
 Saturday 9.30am - 5.30pm  
 Sunday 2pm - 5.30pm  
[www.solvawoolenmill.co.uk](http://www.solvawoolenmill.co.uk)  
 01437 721112  
 waterwheel shop tearoom

**Maths Tutoring**  
 Helping to give confidence,  
 unlock mental blocks.  
**Competitive rates**  
 To discuss your needs call  
**Philipa Rose**  
**01437 721483**  
**07717 783492**  
 or email  
[philipadr@outlook.com](mailto:philipadr@outlook.com)

42 Nun Street, St Davids  
 Seasonal flowers  
  
 Free deliveries  
 Please call Clare: 07791 762718

Advertise your company,  
 service or product here  
  
**01437 720111**  
[newyddionsolfach@gmail.com](mailto:newyddionsolfach@gmail.com)

**The Ship, Solva 01437 721528**  
 New home  
 cooked menu  
 Great drinks  
 offers  
 Open log fire  
 Wed quiz 8 pm  
 with jackpot  
 raffle  
**BOOK NOW!**  
  
 Follow:    
 @theshipinnsolva

**Mathias Home Hardware** **01437 720340**  
 Mathias Home Hardware  
 is a traditional hardware  
 shop. We have everything  
 for any DIY, home, garden  
 or camping needs.  
**71 Nun Street, St Davids SA62 6NU**

Advertise your company,  
 service or product here  
  
**01437 720111**  
[newyddionsolfach@gmail.com](mailto:newyddionsolfach@gmail.com)

Advertise your company,  
 service or product here  
  
**01437 720111**  
[newyddionsolfach@gmail.com](mailto:newyddionsolfach@gmail.com)

Advertise your company,  
 service or product here  
  
**01437 720111**  
[newyddionsolfach@gmail.com](mailto:newyddionsolfach@gmail.com)

Advertise your company,  
 service or product here  
  
**01437 720111**  
[newyddionsolfach@gmail.com](mailto:newyddionsolfach@gmail.com)

Advertise your company,  
 service or product here  
  
**01437 720111**  
[newyddionsolfach@gmail.com](mailto:newyddionsolfach@gmail.com)

**Solva News** - now in its 12<sup>th</sup> year of publication, has a unique and innovative approach to community and visitor engagement and interaction, not only for Solva, but the St Davids peninsula, countywide and internationally. There are 11 issues per year. Printed issues are delivered free of charge to households in Solva and available at Bay Views Stores, Window on Wales and Solva Memorial Hall. The publication also has its own website and facebook page. Readership is wide-reaching and it provides a vital community link and, especially in the holiday season, an essential visitor information guide. The new design has enabled more advertising space. If you would like to advertise on this page (and reach 11400 readers - paper edition & 5700 readers - web version - 1000 hits /month), please contact: 01437 720111 or email [newyddionsolfach@gmail.com](mailto:newyddionsolfach@gmail.com)

**[www.solvanews.co.uk](http://www.solvanews.co.uk)**