

The newsletter can be downloaded  
as a pdf from the website:  
[www.solvanews.co.uk](http://www.solvanews.co.uk)



**November 2019 No. 131**



**Free Copy  
Please take one**



### Community Christmas Lunch

Solva's annual over-60s Christmas luncheon will be held on Saturday 7 Dec.

Lunch to be served at 12:30pm. Please arrive no earlier than 12 noon.

Entertainment by the Brian Jobson band. If you are part of the Solva community, over 60 and wish to attend, please put your name and dietary requirements on the list in Bay View Stores ASAP.



### Make Solva "Sparkle"

Thanks to all of you who are already planning your Advent windows. There is no limit to the number of windows so here is a reminder of the requirements.

- The window needs to be visible from the road (can be upstairs).
- The theme can be religious or festive.
- Ideally the window will be lit from 5pm to 10pm each day.
- The window will need to have a back light - may be on a timer.
- Choose a date on which you would like to start to light your window (any between 1st & 24th Dec).
- Make sure you incorporate that date into the design (as in an advent calendar - see above).



We would like many more houses to take part and as many children to be involved as possible. Please let Lena (07805 717556) or Carol Ann (07970 614233) know your details and date of choice so that we can make a map available to people who would like to do an Advent Trail of "SPARKLING SOLVA".

### From County Councillor Mark Carter

As the local member I am keen to know how the new waste and recycling arrangements work in Solva and indeed throughout Pembrokeshire. Can I ask that, if anyone has any concerns with these new arrangements, they contact me on 07976 553912 or [markmcarter19@gmail.com](mailto:markmcarter19@gmail.com). If anyone has a concern that a neighbour or friend is having difficulties, please make contact. I am especially keen to hear from anyone who has not had the correct equipment delivered or indeed any information on properties that have received a blue box that shouldn't have done so. I would also welcome any feedback from residents who have had difficulties in contacting the Council for both matters relating to waste and also general matters. Many thanks for your help, regards Mark Carter



### Prendergast, Lower Solva - Closed 4-8 November - resurfacing:

Pembrokeshire County Council hereby gives notice that the following restriction(s) as detailed in the schedule to this notice will apply during the dates and times specified.

Location:- Prendergast, Solva – from its junction with Main Street (A487), north to a point near the turning bay near no.47. Alternative route:- A487 Solva to St Davids road, unclassified (U3055) road at Nine Wells towards Whitchurch and U3035 towards Middle Mill.



**The Royal George**  
SOLVA  
PUB & RESTAURANT

Visit us on

**New Italian Restaurant Menu**

**FREE PARKING!** Tel: 01437 720002

Tuesday is Ukulele night from 8pm!  
Barry's Fun Quiz - 9pm Sundays  
Everyone welcome.

From our cows... ...to your cone

**POINTZ CASTLE ICE CREAM**

www.PointzCastle.com

07837 995910  
[info@llanungar.wales](mailto:info@llanungar.wales)  
[www.llanungar.wales](http://www.llanungar.wales)

**LLANUNGAR CARAVAN & CAMPING**  
Solva, Pembrokeshire SA62 6UA

**MAINTENANCE MATTERS**  
Home & Garden

Interior/Exterior Decorating  
Fence/Shed/Decking Staining  
Gutter/Fascia/Patio Cleaning  
**ALL Garden Maintenance**

**Prompt, Reliable, FREE Quotations**  
Dean: 01437 720179 or 07811 151678

## Solva WI

A few members were unable to attend the meeting on 10 October and missed a treat as Mary Haughton, our President, gave a wonderful talk illustrated with numerous items - ranging in date from the late 1800's - which had been stored in her parents' attic. Mary's mother, a past member of Solva WI, carefully & fastidiously labelled everything including the history and stories about them - we were spellbound for over an hour!

The "Business" included confirmation that arrangements will be made for a visit to Cegin Gareth in April 2020. Research is still ongoing on the purchase of a computer and projector using the bequest from Mrs Marilyn Davies.

Due to a clash of dates, the Solva WI Christmas Dinner will now take place at the Cambrian Inn on Monday 2nd December.

The Annual Meeting takes place next month, members were asked to consider joining the committee. This meeting commences at 1pm with a soup lunch kindly provided by members. Jenny Jones & Jane Pascoe will be the delegates at the PFWI Council Meeting on Saturday 23 November.

The Book Group is still meeting regularly.

It has been agreed that we will run a bottle tombola and sell bric-a-brac (unwanted gifts!) at the Church Christmas Fayre on Thursday 21 November. We will also take part in the Annual Christmas Tree competition in St Aidans Church, setting up on Friday 29 November. Members were asked to make a small cracker out of recycled materials and bring it to the November meeting.

Members were asked to donate (at our meeting on Thursday 12 Dec.) from a list of requested items from PATCH in lieu of a Christmas Hamper.



## Memorial Hall 100+ Club

The draw took place at the Thursday Coffee Morning on 10 October. Winners were:

1st	Lucky number 105	Sue Wade	£50.00
2nd	Lucky Number 123	Gethin & Maureen Evans	£40.00
3rd	Lucky number 75	Camilla Youde	£30.00



We have some numbers available for the coming year. If you want to take part and help support Solva Memorial Hall, please contact Jonathan on 01437 720213 or Carol Ann at one of the Thursday coffee mornings. Spare numbers are: 10, 26, 34, 36, 43, 45, 53, 76, 83, 86, 98, 119, 125, 130.

## Solva Memorial Hall News

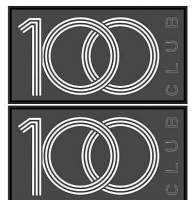
Solva Memorial Hall is having a WiFi system installed. It will be free for hall users and log-in details will be provided.



## Parc-y-Capel 100+ Club

The draw took place on Monday 14 October at the Chapel Coffee Morning. The Winners:

1st	Billy Young	No.48	£50.00
2nd	John Griffiths	No. 8	£30.00
3rd	Liz Walker	No. 27	£20.00



Spare numbers available for the coming season: 13, 24, 30, 34, 39, 44, 56, 69, 92, 123, 126 and 127. Please contact Jonathan on 01437 720213 if you would like to take part.

Solva WI welcomes new members and visitors. We meet most months in Solva Memorial Hall on the 2<sup>nd</sup> Thursday at 2pm  
Contact Kathryn:  
01437 721283

## SOLVA COMMUNITY CINEMA

Thu 7 Nov: "The Wife" (15) *Please note: No meal*

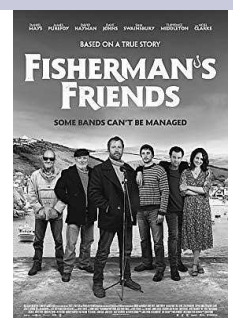
Thu 5 Dec: "Fisherman's Friends" (12A)

Thu 9 Jan 2020 (NOT 1st Thursday): "Yesterday" (12A)

Thu 6 Feb "Black Cat White Cat" (15)

Adults: £5.00; Under 18's: £3.50

Doors open: 7pm / Show: 7:30pm



Thursday 5 Dec

## Ysgol Penrhyn Dewi

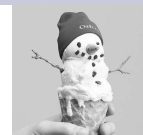
Congratulations to year 10 pupils Mai, Matthew, Caitlin, Ffion, Lauren, Katie, Max and Ricky-Lee, all of whom successfully completed the British Heart Foundation Heart Start course. The pupils learnt vital first aid skills including: recognising a heart attack and cardiac arrest; helping an unconscious person, including the recovery position; how to perform CPR; helping someone who is choking; and responding to serious bleeding. Pictured with their certificates are Matthew, Caitlin and Mai.

Congratulations also to year 6 pupils Tom and Charlie who have become full Choristers.



## Pointz Castle Christmas Fair - Sunday 8 December, 11am - 4pm.

An opportunity for shopping with lots of local stall holders in attendance, visiting Santa in his grotto, mulled wine and plenty of festive ice cream flavours!



## Church in Wales Services for November

Sunday 3 Nov @9.30 Morning worship in St Aidans

Sunday 10 Nov @ 10.45 Remembrance Service

Sunday 17 Nov @ 9.30 Holy Communion in St Davids Whitchurch

Sunday 24 Nov @ 9.30 Morning Prayer in St Aidans

A list of all other services in the LMA is available on GDLMA website.

Thursday 21 Nov - Christmas Fayre in Solva Memorial Hall at 5.30pm.

Christmas Tree Festival at St Aidans Solva - Setting up on Friday 29 Nov.

Everyone is welcome to enter. Entry forms available from the GDLMA website / PCC members. Festival runs Saturday 30 Nov 10.00-16.00 to Sunday 1 Dec 10.00-16.00. The Festival will close with a Christmas concert from Goodwick Community Brass Band – Tickets £5 per person available on the day of the concert.



## RNLI – Bingo Night

St Davids Lifeboat Fundraiser.

A fun evening of bingo with great prizes Monday 25 Nov at Ysgol Penrhyn Dewi - Dewi Campus. Eyes Down at 6.30pm to win vouchers, wine, chocolates and hampers!

Plus a Raffle, refreshments and RNLI souvenirs on sale. Please come and support the RNLI.



## The Churches of Solva and Whitchurch 100+ Club

The 2nd draw of 2019/20 took place in St Aidans on 13 Oct. The prize winners were:

1st Mrs Maureen Turner £70

2nd Mrs Mair Beynon £45

3rd Mrs Pat Rees £30



## Solva Woollen Mill

Christmas Fair - Saturday 30 Nov from 10am - 5pm.

Free entry, lots of stalls, hot food and free parking.



## Slimming World comes to Solva

A warm and friendly Slimming World group will open on Wednesday 20 November, taking place in Solva Memorial Hall, 39 High Street, Solva SA62 6TE each Wednesday at 5:30pm. To book a place please call Samara on 07498 322314. "We look forward to seeing you"



## An Evening of Mediumship with Kayliegh Davies

Friday 8 November Solva Memorial Hall - doors open 6:30pm, Start 7pm.

In aid of Solva football club.

Tickets £10 and available from: 07531 268861 / Bay View stores / on the door.



## Solva Open Gardens Event 2020

To be held over the weekend of the 18 & 19 July 2020 with all proceeds going to Solva Care.

Would you be interested in opening your garden to the public for a weekend? With 9 months to go there's plenty of time to plan & plant. All gardens are welcome from the smallest, barely begun "work-in-progress" to the biggest hanging garden of Babylon. The greater the variety, the more interesting the event! For more details please contact Lynne on 07779 083498 or Maggie on 07956 373465.



## Solva Precept Pressure 2020/21

Pembrokeshire County Council (PCC) will have a 2020/21 funding gap and, although probably less than previous years, is seeking our support to deliver various non-statutory services which otherwise may be at risk of being withdrawn. These include:

- Public toilets
- Play parks
- Parks, gardens & public open spaces

The first of these are play park services and PCC plan to transfer the full cost to Solva Community Council (SCC) in April 2020. The forecast cost is £1,200 which could see our 2020/21 precept rise by 3.43%.

SCC has already taken financial control for the delivery of local Youth Services at an annual cost of £3,155. The cost of local elections has already been

passed to community councils and PCC will now charge SCC approximately £5,000 for any contested election. SCC must be ready for the 2022 local elections and has from 2018 included £1,000 within the annual precept to cover expected costs. Such increases to our precept are always a challenge to justify and we wish to do everything we can to protect residents from further excessive precept rises especially in the wake of Council Tax increases of 23.6% over the last two years. SCC will consider all options to ensure our play parks remain open. Community Councillors will debate and agree a way forward at their meeting on Wednesday 6 November at 6:30pm in the Memorial Hall.

## Solva Community Council

SCC will meet on Wednesday 6 Nov at 6.30pm in the Memorial Hall.

Items on the agenda:

- Play park Services - debate & 2020/21 funding motion (see Solva Precept Pressure article)
- Dog Fouling - Enforcement officers debate
- Solva Community Land Trust
- V.E. Day 75 years Celebrations
- Finance report
- Planning applications
- Local concerns

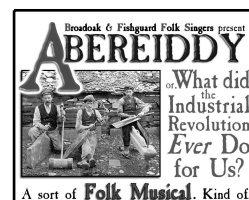
Members of the local community who wish to attend, please inform SCC Clerk Bruce Payne on 07890 987259.



## A Folk Musical entitled "Abereiddy" - Solva Memorial Hall, Saturday 9 November.

Curtain up: 7.30pm. Abereiddy has a unique story which will be told through original songs, two narrators and performed by local folk bands Broadoak and Fishguard Folk Singers. Tickets £10 - available from Bay View Stores / or phone 07934 418186.

There is more information about the show at [www.broadoakfolk.com/abereiddy](http://www.broadoakfolk.com/abereiddy).



## Trecadwgan Farm Update

Many thanks to all who turned out for the walk to Trecadwgan Farm on Saturday 12 October. Everyone had a good look around the Farm and listened to short talks by Gerald Miles and Mollie Roach on the plans for the Farm to support the well-being of our community and others on the St Davids Peninsula. Everyone expressed enthusiasm for the Project and useful ideas were put forward. Bids for the Farm have to be submitted to the agents by Friday 1 November and the Campaign Group is busy trying to secure a loan from the Bank and from people happy to provide seed loan funding.

Contact: Gareth Chapman: 07900 411952 Rupert Dunn: 07955 387614 [www.savetrecadwganfarm.org](http://www.savetrecadwganfarm.org)

This month, organic farmer and campaigner Gerald Miles drove the lovely MF165 tractor to London. An epic and enjoyable adventure, Gerald was protesting directly against the sale of Council Farms like Trecadwgan Farm, Solva. A sale such as this by PCC denies a young generation of farmers the opportunity to take the first step on the farming ladder and would end the farm's life as a working, living farm at the heart of the community.

The combined efforts of the campaign to create a community farm for Trecadwgan reflect our wish to create a model that can be replicated across Wales, with knowledge, skills and well-being of the community at its centre. Losing such a wonderful farm as Trecadwgan would be of the greatest regret as, once lost, this important part of our cultural heritage can never be replaced.

We are committed to making "The Future Generations Act" a reality and to give real purpose to what it





**SOLVA CARE CHARITY - Registered Charity number: 1172873**

**Lena Dixon, Co-ordinator: 07805 717556,**

**Lesley Robertson-Steel, Project Officer: 07722 091664**

**Email: [contact@solvacare.co.uk](mailto:contact@solvacare.co.uk)**



### News:

We had a very enjoyable cinema outing to see "The King & I" on Thursday 10 October. There will be another trip to Theatr Gwaun on Thursday 7 November, after the coffee morning, to see Gene Kelly in "An American in Paris". Please contact Lena (details above) for info and to book a place.

- Look out for events in connection with Thursday coffee mornings: on 14 November, AGE UK will visit and in early December there will be a talk about scams etc.
- We are planning a film project about Solva "The importance of Place" If anyone is interested in getting involved, contact Lena.
- There are Art sessions at the VC Gallery in Haverfordwest every Wednesday between 12.30pm and 2.30pm (£2/head), If anyone is interested in going, please contact Sandra on 01437 721450.



### Friday Club

In September Ceri once again provided craft activities – this time card making that everyone could treasure and take home. Brenda's creative drama generated fun and laughter with a session using different dressing up hats.

October started with a rousing Solva Ukulele Pirates session and Brenda's Line dancing. This was followed by Helen's gentle movement, lulling everyone into a relaxed and soporific state. Reminiscing with Carol Ann provoked the sharing of objects, stimulating interest, memory recall and conviviality and this, once again was followed by further developmental movement with Helen, who also provided a fun and enjoyable music quiz. We also enjoyed Rosita's sing-a-long and a trip to Vincent Davies Christmas store and café on the Bus y Bobl, in late October.

November will comprise: Tony's Country and Western on 1st Nov; Fun Quiz with Ifor and Gill on Friday 8 Nov; Solva Ukulele Pirates on Friday 15 Nov (in the Football Club - please note); Nadia's craft making for Advent windows on Friday 22 Nov; plus Cathedral Bells on Friday 29 Nov. With the exception of Country Western, all are followed by Helen's Gentle movement.



Please note: It is possible to get this newsletter delivered as an A4 version, just contact Solva News on 01437 720111 or email [newyddionsolfach@gmail.com](mailto:newyddionsolfach@gmail.com).

### Hatha Akhanda Yoga

Catrin will be teaching yoga every Tuesday night from 6-7.30 from 5 Nov through to 17 Dec. £10 per class if paying for a block of 7 classes and £12 for a drop-in class.



### Shalom House - "Breaking News"

Shalom House Palliative Care Unit is delighted to announce the opening of another shop - in St Davids. "Shalom @ no 13" will have its grand opening on Saturday 30 November at 13 New Street, St Davids (the old post office). We will be selling occasion wear and vintage clothing for parties, weddings and special occasions - including hats, shoes, jewellery and handbags to complete the outfit!

We are actively looking for volunteers to help us in the shop - can you spare us a few hours a week? Mornings: 10am -1pm & afternoons: 1pm-4pm. Please call for an application form on 01437 721344.

We would also be happy to receive stock for our shop! Is it time to de-clutter your wardrobe in time for the festive season? Party dresses and smart wear – as well as jewellery, hat, shoes – please think about "Shalom @ no 13" as the right destination for your castoffs. We will also be selling our Charity Christmas Cards and branded items – shopping bags, aprons and t-towels. "Shalom @ no 13" is also the destination for all your Christmas present shopping. Please support this wonderful local charity! Late news: We need a chevalier mirror for the shop opening in St Davids! Contact number above.

## CPD Solfach / Solva AFC

Would like to thank Jono & Sandy Voyce, of Solva Seafoods, for sponsoring the new kit for Solva Under 13s.



## Solva AFC – Darts Night Fund raiser!

Saturday 16 November at the Football Club. £10 entry includes a curry! First match 7pm £££ cash First Prize. All funds raised for Solva AFC refurbishment project. Please register your entry with Josh Phillips, Harbour Inn by 10 Nov.



## Solva Surgery Wins The Western Telegraph Health & Care Award

The event was held at the Pavilion on Withybush Showground on Thursday 10 October. Solva Surgery was one of the finalists and went on to win GP Practice of the Year! The Team at the surgery are very grateful to everyone that voted for them. Congratulations also to St Davids surgery who reached the final three nominations in the “Outstanding Achievement Award” category. Solva surgery's next Flu clinic is on Saturday 9 November, there are still have a few slots left, please contact the surgery on 01437 721306 to make an appointment.



## Porthmawr SLS Club success

Porthmawr Surf Life Saving Club played host to the GB Surf Life Saving Championships at Whitesands over the weekend of 7-8 September. With clubs from all over England and Wales taking part, the standard of competition was high. Enjoying some late summer sun and home advantage, the small team from Porthmawr punched above their weight, winning two national titles through Finn Iles in the 2km Beach Run and Sam Ellison in the Beach Flags event. Congratulations to all involved and to Porthmawr SLS club who hosted a great event to finish a highly successful year.



## Solva Christmas Shopping - Wednesday 4 December

Save the date! Solva Shopping Evening will be open until 7.30pm. Businesses in Lower Solva will be offering mulled wine and special offers, plus more Christmas happenings a-going on! For more information or to get involved email Bella bellap@tiscali.co.uk



## Oriel y Parc Christmas Market - Saturday 7 December, 10am-4pm

A celebration of Christmas with local foods, crafts and music, plus festive foods in the café. FREE entry. Father Christmas visit £2.50 per child.



## Beacon Community Group - “Friends & Food” coffee mornings at St Davids Sea Scout Hut.

Tea, coffee and refreshments are available from 11am – 2pm every Thursday (during the Winter) and Mondays and Thursdays (during the Summer). Funding provided by supporters and donations will be used to provide all refreshments free of charge. The group uses the space to increase community well being, and to support families. Breakfast and lunch foods and bakery goods will be available to take away, also free. If you can offer your time, expertise, resources or ideas, contact Dr Louise Tarbuck on 01437 729321 or Geraint Michael on 07974 799087.

## Solva Boat Owners Association

- Please be informed that water will be unavailable on the Quay from 3rd Nov until 4 weeks before 2020 lift-in.
- Boat owners are requested to ensure their rigging is properly secured so it does not cause a noise nuisance.
- No other boats/dinghies/kayaks are to be left on the Lower Solva Foreshore Boat Park without the authority of the SBOA committee.
- All lift-out invoices have been sent.



**The Bug Farm** - Time to get festive! Mulled wine and a fabulous range of stalls selling the best of Pembrokeshire's Art, Crafts and home made produce await.  
Sat 14 Dec 10:30am - 4:30pm  
£1.50 entry (includes entry to the Bug Farm).



## WHAT'S ON

Fri 1 Nov	Solva Fireworks display	Solva Lower car park	6:30pm
Fri 1 Nov	Night-Out "Mountain Music" performance	Memorial Hall	7:30pm
4- 8 Nov	Prendergast, Lower Solva Road closed	Prendergast, Solva	All day
5 Nov- 17Dec	Hatha Akhanda Yoga continues: Tuesdays to Dec.	Memorial Hall	6-7:30pm
Wed 6 Nov	SCC meeting	Memorial Hall	6:30pm
Thu 7 Nov	Solva Cinema presents "The Wife" (15)	Memorial Hall	7pm
Fri 8 Nov	Evening of Mediumship with Kayliegh Davies	Memorial Hall	6:30pm
Sat 9 Nov	Folk Musical "Abereiddy"	Memorial Hall	7:30pm
Sat 16 Nov	Dart's Night fund raiser for Solva AFC	Football Club	7pm
Wed 20 Nov	Slimming World starts	Memorial Hall	5:30pm
Thu 21 Nov	Church in Wales Christmas Fayre	Memorial Hall	5:30pm
Mon 25 Nov	RNLI Bingo Night fund raiser at Ysgol Penrhyn Dewi	St Davids	6:30pm
Sat 30 Nov	Solva Woollen Mill Christmas Fair	Middle Mill	10am-5pm
30 Nov-1 Dec	Christmas Tree Festival	St Aidans Church	10am-4pm
Wed 4 Dec	Solva Shopping Evening	Lower Solva	>7:30pm
Thu 5 Dec	Solva Cinema presents "Fisherman's Friends" (12A)	Memorial Hall	7pm
Sat 7 Dec	Community Christmas Lunch	Memorial Hall	12:30pm
Sat 7 Dec	Oriel y Parc Christmas Market	St Davids	10am-4pm
Sun 8 Dec	Pointz Castle Ice Cream Christmas Fair	Pointz Castle farm	11am-4pm
1, 8, 15, 22 & 29 Nov - Friday Club: see page 5 for details		Memorial Hall	2pm-4pm

## REGULAR EVENTS

M	10-11am	Solva Tai Chi	Memorial Hall	Fey	07802 648793
M	10.30am-12.30	Coffee & Chat	Capel Ucha	Grace Davies	01437 721533
M	2.30pm	Welsh Conversation Class	Capel Ucha	Grace Davies	01437 721533
M	7-8.30pm	Singing For Fun	Memorial Hall	Anne Hughes	07742 576031
M	7-9pm	Solva Youth Club	Football Club		
T	2-3pm	Gentle Fitness	Memorial Hall	Laura: letswalkpembs@gmail.com	
T	2pm	Men's Shed	Football Club	Robin Tyler	01437 721588
T	6-7.30pm	Hatha Akhanda Yoga	Memorial Hall	Catrin	07581 201477
T	7.45pm	Pembs Ukulele Pirates practice	Royal George	Jonathan	01437 720213
T	9pm	Tony's Big Time Bingo (3rd Tues)	Harbour Inn		01437 720013
W	12.30pm	Senior Citizens' Lunch Club	Memorial Hall	Jane Pascoe	01437 721544
W	2-4pm	Solva Craft Club	Memorial Hall	Maggie	01437 720478
W	5.30-7pm	Slimming World	Memorial Hall	Samara	07498 322314
W	6pm	Youth Rowing Club	Trinity Quay	Steve Probert	07970 063074
W	8pm	Quiz at the Ship	Ship Inn		01437 721528
W	9pm	Dai Ball's Quiz/Open the box	Harbour Inn		01437 720013
T	10.30-12 noon	Coffee Morning / Mini library	Memorial Hall	Carol Ann	01437 721374
T	10.30-11.30am	Pilates	Memorial Hall	Pip Marsh	01437 720314
T	11.45am - 1pm	Computer Club	Memorial Hall	Tom	01437 774775
T	2pm	Solva WI (2nd Thurs of month)	Memorial Hall	Kathryn	01437 721283
T	2.30pm	Bible Study Group	Capel Ucha	Grace Davies	01437 721533
T	6pm	Rowing Club	Trinity Quay	Steve Probert	07970 063074
T	7.30pm	Solva Cinema (1st Thu/month)	Memorial Hall	Lena Dixon	07905 717556
F	10-12 noon	Solva Care "Drop-in Surgery"	Solva Surgery	Lena Dixon	07805 717556
F	2-4 pm	Solva Care "Friday Club"	Memorial Hall	Lena Dixon	07805 717556
Sn	10.30am	Church service	Capel Ucha	Grace Davies	01437 721533
Sn	9.30 / 10.30am	Church in Wales services	St Aidans/Whitchurch	See page 3	
Sn	8.30 pm	Barry's Fun Quiz & Raffle	Royal George	Barry	01437 720002

**Solva Seafoods**



Fresh Crab,  
Lobster & Wet  
Fish Caught and  
Prepared Daily.

T: 07773 846 560  
Or 01437 729169  
Website: [www.solvaseafoods.co.uk](http://www.solvaseafoods.co.uk)

**Solva Caterers**

Fully Licensed Bar Available for Weddings, Private Parties or any event. The perfect Wedding Venue also available with stunning views across St Brides Bay.

For all Enquiries call Jonathan Voyce on  
07773 846560 or email: [jono@solva.co.uk](mailto:jono@solva.co.uk)

Thank you for making it a huge success



**The Edge Festival**

SOLVA - WALES

JOIN US FOR A CELEBRATION OF THE ARTS  
LITERATURE - MUSIC - SPORT  
AND WONDERFUL FOOD & DRINK

**MamGu welshcakes**



Homemade Welshcakes  
Welsh Inspired Dishes  
Breakfast, Lunch,  
Cakes & Drinks

20 Main Street, Solva  
01437 454369

42 Nun Street, St Davids

Seasonal flowers



Local deliveries

Please call Clare: 07791 762718

**SOLVA**  
BOATOWNERS  
ASSOCIATION



TRINITY QUAY SOLVA

[info@solvaboatowners.co.uk](mailto:info@solvaboatowners.co.uk)

Tel Sec 01437 721220  
Tel HM 01437 721725

Hosting - Design - Social Media

**webzer**



Unlimited Webhosting  
for £2.99 a month!

0800 6121 051  
[www.webzer.co.uk](http://www.webzer.co.uk)

SEO - Ecommerce - IT Services

**THE HARBOUR INN**



01437 720 013

THE HARBOUR INN OFFERS GOOD FOOD WITH  
THE OPTION OF A DAILY SPECIALS BOARD,  
FRIENDLY STAFF AND A WARM WELCOME.

A DOG FRIENDLY PUB ON THE SEAFRONT OF SOLVA.

**Maths Tutoring**

Helping to give confidence to all

*This advert was so successful that all places have been filled*

your needs call  
Philipa Rose

To advertise here please contact:  
[newyddionsolfach@gmail.com](mailto:newyddionsolfach@gmail.com)  
or phone: 01437 720111  
[pimpadvertising.co.uk](http://pimpadvertising.co.uk)

**solva**  
woollen mill

we are open all year  
Monday to Friday  
9.30am to 5.30pm  
Also July to September  
Saturday 9.30am - 5.30pm  
Sunday 2pm - 5.30pm

[www.solvawoollenmill.co.uk](http://www.solvawoollenmill.co.uk)  
01437 721112  
waterwheel shop tearoom

**The Ship, Solva 01437 721528**

New home cooked menu  
Great drinks offers  
Open log fire  
Wed quiz 8 pm  
with jackpot raffle  
**BOOK NOW!**



Follow:    
@theshipinnsolva

**Mathias Home Hardware**

01437 720340

Mathias Home Hardware is a traditional hardware shop. We have everything for any DIY, home, garden or camping needs.

71 Nun Street, St Davids SA62 6NU

**Café on the Quay**

Trinity Quay, Solva Harbour

Fine Italian Coffee  
Homemade Cakes and Solva Crab  
Sandwiches & Local Ice Cream

01437 721725

Enjoy the Solva sunshine sitting on the Quay...  
Bring the family crabbing! We sell bait and lines.

**Menevia**  
BEAUTY & SPA



ENJOY A WIDE VARIETY OF BEAUTY  
SPA AND COMPLEMENTARY THERAPIES  
IN A RELAXING FRIENDLY PLACE

42 GOAT STREET ST DAVIDS  
CALL US 01437 454 114

Advertise your company, service or product here



01437 720111  
[newyddionsolfach@gmail.com](mailto:newyddionsolfach@gmail.com)

**RAUL SPEEK GALLERY**



Fine Art, Artist's Studio, Photographs, Prints  
Art Workshops, Talks, Music, Jewellery, Gifts  
Music & Tapas Nights, Pop-up Café

The Old Chapel, Main Street, Solva SA62 6UU  
Tel: 01437 721907  
[e:heather@heatherbennett.co.uk](mailto:e:heather@heatherbennett.co.uk)  
[www.raulspeek.co.uk](http://www.raulspeek.co.uk) [www.heatherbennett.co.uk](http://www.heatherbennett.co.uk)

Please send articles for publication to: [newyddionsolfach@gmail.com](mailto:newyddionsolfach@gmail.com)