



Large copies of the newsletter
are available on request:
01437 720111

April 2019**No. 124**

Free Copy
Please take one

Solva Duck Race 2019

People come from near and far to try their hand at picking the name of the winning ducks. With a choice of names you have the chance to win £10 for first place, £5 for second and £2.50 for third. So choose a duck's name and purchase your tickets from Bay View Stores, Window on Wales (Solva & St Davids), Royal George, Ship Inn, Harbour Inn, MamGu Welsh Cakes, and 35 Main Street. Tickets are available on the day. Funds raised go to the upkeep of Solva Memorial Hall.

**Solva Tourist Association - Solva Logo Competition**

Today we are launching a competition to design a logo for Solva. The new logo will be used on all Solva Tourist Association literature, a new Solva tourism app and anything else that needs the logo. The designer of the winning logo will receive a £60 M&S voucher.

We're looking for something that reflects our community and has a simple, modern but relevant theme, which also incorporates the view of the harbour.

Guidelines:

- This is an amateur competition
- We are looking for an original design
- Must include the word "Solva" in both English and Welsh
- Must include a view of Solva harbour
- Your submissions should be on an A4 size paper and should be big enough to allow the judges to clearly see what is represented (with explanatory notations if you like) and capable of still being clear when reduced in size to approx. 3.5 x 2.5 cm.
- You can submit as many designs as you wish and entries are encouraged from all ages

Please send your submission(s) labelled with your name, email address and telephone number to Bruce Payne (SCC Clerk) either by post (c/o Bay View Stores) or scanned and emailed to brucepayne241@gmail.com by Monday 6 May. Winner will be announced on Monday 20 May.

**Parc y Capel Fete**

The spring fete will be held on Monday 27 May from 2-4pm.

This event is an annual favourite of locals and visitors alike, and is the main funding activity for Parc y Capel, ensuring the parc is maintained and can be enjoyed by all. Teas and cakes will be served in the Memorial Hall and there will be an abundance of stalls, with the famous raffle and sunflower plants on sale in the parc. All very welcome to attend.



The Royal George
SOLVA
PUB & RESTAURANT

Visit us on

New Italian Restaurant Menu

FREE PARKING! Tel: 01437 720002

Thursday is Ukulele night from 8pm!
Barry's Fun Quiz - 9pm Sundays
Everyone welcome.

From our cows... ...to your cone

POINTZ CASTLE ICE CREAM

www.PointzCastle.com

07837 995910
info@llanungar.wales
www.llanungar.wales

LLANUNGAR CARAVAN & CAMPING
Solva, Pembrokeshire SA62 6UA

For All Your Home & Garden MAINTENANCE MATTERS

Call T: 01437 720179
Dean M: 07811 151678

**FREE QUOTES FULLY INSURED
LOCAL & RELIABLE**

Men's Shed update and Sport Reminiscing - Tuesday 16 April Solva AFC Clubhouse starting at 2pm. If you have any sports memorabilia, please bring it along. The Men's Shed first meeting will take place the following Tuesday 23 April starting at 2pm, in Solva AFC Clubhouse.



Solva WI

The annual fundraising Pancake Coffee Morning held on Shrove Tuesday was, unfortunately, not as well supported as in past years, but £100 was raised and has been donated to Shalom House.



The Walking Group continues to meet on Monday afternoons, unless the weather stops them, and the monthly meeting of the Book Club is held in warm and welcoming establishments throughout the village, preferably where lunch is being served!

On Tuesday 26 March, 9 members, making up 3 teams, took part in the Membership Quiz at the Picton Centre, an enlightening and engaging time was had by all. Next month members will be attending the Dewisland Group meeting on Wednesday 10 April at Crundale Hall. The speaker is Peter Sharpe who escorts Her Majesty at the Royal Windsor Horse Show.

Following our monthly meeting, we welcomed back Julian Cremona, past Head of Dale Fort Field Centre, who, as ever, gave an interesting and fascinating illustrated talk. The theme this time being "Wildlife in France".

Members are reminded to bring a plate of "finger" food for the 11 April pre-meeting lunch which starts at 1pm. Sam Langdon an expert on snakes, will give an illustrated talk entitled "Adders are Amazing" - non-members are welcome to attend.



The St Davids & Solva Art Group Easter Exhibition opens on Saturday 13 April at Oriol y Parc, St Davids. This vibrant group of about 25 local artists will be exhibiting their original paintings and prints, taking inspiration from the coastal scenery and light. The exhibition will open at lunchtime on Saturday 13 April and will be open daily from 9.30am - 4.30pm and will close on Friday 26 April at 4.30pm. Paintings can be purchased by cash or card and are priced to suit all pockets. We look forward to seeing you.

MamGu Welsh Cakes

There will be a Solva Gin tasting evening at MamGu Welsh Cakes on Friday 12 April at 7pm. Tickets: £10 to include: tapas style nibbles, gin tasting and a talk on Solva Community Gin and its projects. Contact 01437 454369 for more info and tickets.



Children's Easter Disco

A special fancy dress (optional) disco will be held on Easter Saturday 20 April in the Memorial Hall from 6-8pm. Children up to 16 are welcome to attend and need to be accompanied by parents. Games to be played and prizes to won, plus food and drinks available. Entry is only £1 and all profits will be donated to Solva Fireworks.



Solva WI welcomes new members and visitors. We meet most months in Solva Memorial Hall on the 2nd Thursday at 2 pm
Contact Kathryn:
01437 721283

SOLVA COMMUNITY CINEMA

Thu 4 April: A Star is Born (15)
(home made cake, tea and coffee available)
Thu 2 May: The Children Act (12)
Thu 6 June: Mission Impossible – Fallout (12)
Thu 4 July: Mary Queen of Scots (15)
Adults: £5.00; Under 18's: £3.50
Doors open: 7pm / Show: 7:30pm



Solva Play Parks New Equipment

Community Consultation

Wednesday 8 May 2019 in Solva Memorial Hall at 5pm

Invitation to Families, Children & Young People of our Local Community

Solva Community Council will showcase 3 different designs for the Gamlin

and Upper play parks. Families are invited to pop in to view and comment on

each of the designs that will allow a wide age-range of children to play, irrespective of mobility impairments. Social space for families and different age groups will be in each design.

Designs will also incorporate a range of outside gym equipment that can be used by all, regardless of age, experience and physical ability. Please come along to look at the proposals and help in our decision making process. It's our pleasure to serve children a complimentary meal at 5:30pm. Soft drinks will also be available.



Solva Community Council

SCC will meet on Wednesday 3 April, 6pm in the Memorial Hall.



Items on the agenda:

- Community Land Trusts
- Whitchurch Church
- Discussion with Welsh Water officers re sewage capacity
- Solva Tourist Association
- Development of Solva tourism app
- SCC AMG
- Play & Skate Parks
- AFC project
- Solva Fireworks Display 2019
- Solva Path Project
- Finance report
- Planning applications
- Local concerns

Members of the local community are welcome to attend. Please let the Clerk (Bruce Payne 07890 987259) know if you wish to come along.

Neighbourhood Watch

To help keep our community safe and crime free the community council is looking to set up a neighbourhood watch scheme. The form this will take is yet to be decided but may involve the community council web page, social media and, hopefully, links to other community councils on the peninsula. If you have any suggestions as to what sort of scheme would best serve the community or, equally, any current concerns regarding crime please contact your community council via the clerk.



Solva Community Council AGM

Wednesday 8 May at 7:30pm in the Memorial Hall.

Everyone is invited to this year's AGM which is an opportunity for groups and individuals to hear about some of the exciting activities with which the community council is involved on your behalf.

Tea, Coffee and Welsh Cakes will be served

This year's AGM will include, for the first time, awards to the:

- Outstanding Community Volunteer
- Outstanding Youth Champion
- Outstanding Community Fundraiser
- Outstanding Contribution to Solva Life

A Cheese and Wine evening will follow the AGM.



Church in Wales services

Monday 1 April, St Davids Cathedral - Canon Rowlands in residence.

Sunday 14 April 11:30am. Palm Sunday, Holy Eucharist at St Davids, Whitchurch.

Thursday 18 April 7pm. Maundy Thursday, Holy Eucharist at St Aidans, Solva.

Friday 19 April. Good Friday, St Lawrence Church. Stations of the Cross and Pilgrimage around LMA churches.

Sunday 21 April 9:30am. Easter Sunday, Holy Eucharist at St Aidans, Solva.

Sunday 28 April 9:30am. Morning Worship at St Aidans Solva.

Further details see GDLMA website or local churches.



Happy
Easter

Ysgol Penrhyn Dewi - St Davids Day Celebrations

A lovely St Davids Day Service was held on the Monday 4 March at the Cathedral where all campuses were in attendance. We are especially proud of the brass ensemble who played on the cross square on the day. Dewi campus followed this with an Eisteddfod and the winning house was Dewi!

Non and Aidan Campuses held their house assemblies on Monday 18 March, and they also celebrated World Book Day by dressing up as book characters. Aidan campus dressed up as Fairytale characters and had a fairytale banquet.



Shalom House

We have two fundraising events in April:- Do join us for the Soul Funk fundraiser with DJ Mr A for Shalom House Palliative Care Centre. Dance to Detroit Soul, New Orleans Funk, West coast Wah-Wah & Harlem Shuffle... it's a vinyl-only zone! On Saturday 6 April 8pm - midnight at St Davids Rugby Football Club Nun Street, St Davids SA62 6BP. Tickets £10 from Oriel y Parc and Pebbles Cafe.

In contrast, on Friday 26 April, the Mayor's Concert in St Davids Cathedral will also be raising money for Shalom House.

Details will be available shortly but please get the date in your diary now!

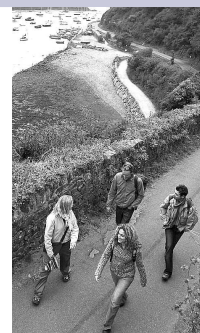


Solva Heritage Society

Come and join us at Solva Memorial Hall on Wednesday, 17 April at 7.30pm for the launch of the first phase of the Solva and Whitchurch Heritage Trail.

This is just the beginning. We hope that you will come with suggestions and photos so that we can build a more comprehensive record of our heritage for future generations, to inform visitors and direct them to our local businesses.

Contact number 07739 158024 or solvaheritage62@gmail.com



Harbour Inn – Charity Fund raiser

The Harbour Inn will be hosting a fun quiz and fund raiser with an equestrian twist on Wednesday 17 April. It is in support of The Katie Wright memorial charity horse show, now in its 21st year. The show will be held at Newton Hall Farm, near Scolton Mannor on Thursday 9 June. It was founded and still run by Paul and Veronica Wright of Pen y Cwm, who tragically lost their daughter Katie age 19.

Over the last 20 years the show proceeds have been donated to Shalom House, Paul Sartori and many other local Pembrokeshire based charities. This year's designated charity is Hafal Crossroads, who support unpaid carers in Pembrokeshire.

The organisers are also looking for any volunteers who would be prepared to muck in with setting up the field and helping to ensure the smooth running of the classes on the day!

Please contact Isobel Morgan on 07971 036851 for more information.



Solva Gin Company - Volunteer recruit required.

We are looking to recruit a volunteer to market our unique handcrafted Solva gin. Responsibilities will include:

- Contacting existing supplies for repeat orders
- Making contact with local business to establish new suppliers
- Deliveries
- Support the on-line sales process

In the first instance, please contact Kay Reynolds on 07889 142115 for more information.



4 All profits of Solva Gin are donated to The Edge Festival.



SOLVA CARE CHARITY - Registered Charity number: 1172873

Lena Dixon, Co-ordinator : 07805 717556

Lesley Robertson-Steel, Project Officer: 07722 091664

Email: contact@solvacare.co.uk



News:

Annual meeting and Celebration Wednesday 10 April in Solva Memorial Hall.

All welcome! For those who can't make it, you can email suggestions to contact@solvacare.co.uk and we are planning to put a suggestion box in the hall. Annual Meeting starts at 5 pm and Celebration with cheese & wine at 6 pm. All welcome. Let Lena Dixon know if you wish to attend (details above).

Mobility scooter and wheelchair

People have kindly donated these items to us. If you could use either of them, please contact Lena (details above).

Tax free childcare

This is a government scheme that helps working parents with childcare costs. There is also some support available while you study. Visit www.childcarechoices.gov.uk for more information.

Ready Meals

There's a company called Parsley Box that delivers very reasonably priced ready meals. Delivery is free and they do not need freezing but keep in the fridge. They have a special introductory offer: 16 meals for £39.99. Call 0800 612 7225 or visit www.parsleybox.com for a brochure.



Direct payments for social care

If you currently receive Social Care or are thinking that you may do in the near future, you may not know about Direct Payments. Direct Payments may allow you more choice and access to better, or more personalised, care.

Becoming part of a local Care Co-operative

Solva Care would like to hear from you if you are a carer – or thinking about becoming a carer – and are interested in finding out more about being part of a local Care Co-operative. To find out more on both topics please contact Lesley at Solva Care on 07722 091664 or email contact@solvacare.co.uk

Friday Club

On Friday 5 April St Davids Cathedral Hand bells will be performing for all who wish to see and hear this musical delight. A recent comment by one of the volunteers from the Friday club was "as a volunteer I receive as much joy, fulfillment and fun as the people we serve and help".



St Davids Surgery - Investors in Carers - Silver Award

St Davids Surgery has recently achieved its Investors in Carers (IiC) Silver Award. Kim Phillips, Carer Lead St Davids Surgery, said: "We are delighted to have achieved our Silver Award. We have worked hard at looking at ways to help our carers and look for hidden carers, and we are grateful our work has been recognised".

The Investors in Carers scheme is a health-led initiative and is a tool designed to help health, social care, 3rd sector and other organisations focus on, and improve, their carer awareness and the help and support they give to carers. To find out more about the Investors in Carers Scheme and the different award levels, visit <http://www.wales.nhs.uk/sitesplus/862/page/66977>



Solva Business Group - The group held its AGM in February.

The group has 43 current members, and the website

www.solva.net attracted over 15,000 hits last year. SBG would welcome new members, so for more information please contact Bella at Window on Wales bellap@tiscali.co.uk or Anna at Solva Woollen Mill on 01437 721112.



Solva.net



Edge News

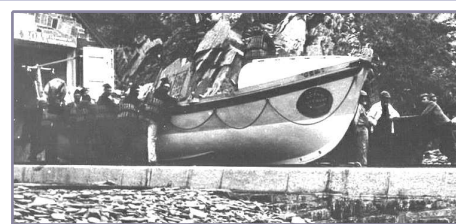
The Edge Festival is going to be bigger than ever this year. We have responded to local concerns about noise by reorientating the stage to point away from housing, the sound system, although more powerful than last year will be much more directional so only visitors to the festival site will feel the full effect of the music. To enhance the festival experience we have a 5m wide screen installed at the back of the stage, this will be used by the artists and it will also show advertising and convey community messages. If your business organisation would like to show a short video to tell the world about your products or services then get in touch with Josh or Ifor. If you are a member of a community group who would like to convey a message our big screen also let us know. Thousands of people will attend the festival site over the weekend, it's a great opportunity to reach a wide audience. So come on board!

Solva Quiz League

The inter-pub quiz season reached a dramatic finale when the top two teams met in the last match. The Cambrian hosted the Harbour Inn in a game that the Cambo had to win to have a chance of being overall champions. After an epic tussle where the early lead of the Harbour was hauled back, the Cambo emerged as winners, which meant that the two teams tied on overall wins. The decision on champions was made by totting up overall season points scored. The Harbour won by 5 points, the narrowest of margins, equating to just one correct answer. Well done to the Harbour Inn. The end of season celebration event, a battle of the sexes, will take place in the Harbour on Thursday 4 April, come along and join the fun. Last year the women won easily. Overall quiz standings for season 2018/2019: 1. Harbour Inn, 2. Cambrian, 3. Royal George, 4. Ship, 5. Brawdy.

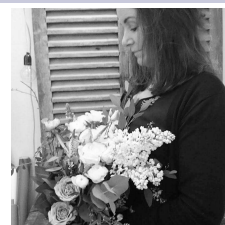


St Davids RNLI - a photo from the archives. It shows the original lifeboat station at St Justinians with the lifeboat "Gem" which served at St Davids between 1885 and 1910. The picture was taken sometime before 1901 with her crew wearing cork life jackets, these were replaced around 1904.



St. Davids Flowers - A treat for Easter

Clare of St Davids Flowers creates beautiful bespoke freestyle bouquets and wreaths. She will cater for events and celebrations, sympathy flowers, gift ideas or even just a personal treat - we all need those! Free local delivery is offered. Please pop in or contact Clare on 07791 762718.



Solva Boat Owners Association

- The 2019 Lift-In will take place on Monday 8 April.
- After the lift, a clean up will take place on Trinity Quay and Sand Quay. The committee hope to enlist volunteers. Please be warned all items found lying around will be taken to the dump.
- Boat owners who winter stored on the foreshore are requested to remove all chocks from the area as soon as possible after the lift.



WHAT'S ON

Wed 3 Apr	SCC meeting	Memorial Hall (upstairs)	6pm
Wed 3 Apr	Mediumship evening with Karen Wilson	Memorial Hall	7:30pm
Thu 4 Apr	Solva Cinema presents "A Star is Born" (15)	Memorial Hall	7pm
Thu 4 Apr	Solva Quiz league "Battle of the sexes"	Harbour Inn	8pm
Sat 6 Apr	Shalom House Soul Funk disco fundraiser	St Davids Football club	8pm-midnight
Tue 9 Apr	SBOA boats lift-In	All quays	All day
Wed 10 Apr	Solva Care AGM and Celebration	Memorial Hall	5pm & 6pm
Thu 11 Apr	Solva WI luncheon and meeting	Memorial Hall	1pm
Fri 12 Apr	MamGu Welsh Cakes Solva Gin tasting evening	MamGu's	7pm
Sat 13 Apr	St Davids & Solva Art Group exhibition opens	Oriel y Parc	12 noon
Tue 16 Apr	Men's Shed & Sport Reminiscing	Solva AFC Clubhouse	2pm
Wed 17 Apr	Solva Heritage Society launch of Heritage trail	Memorial Hall	7:30pm
Wed 17 Apr	Fun Quiz & Fund raiser	Harbour Inn	7:30pm
Sat 20 Apr	Children's Easter Disco	Memorial Hall	6pm-8pm
Mon 22 Apr	Solva Duck Race	Lower Solva	3pm
Fri 26 Apr	St Davids Mayor's concert in aid of Shalom House	St Davids Cathedral	TBA
Mon 6 May	Solva Logo Competition deadline	Send to SCC Clerk	5pm

REGULAR EVENTS

M	10-11am	Solva Tai Chi	Memorial Hall	Fey	01437 720889
M	10.30am-12.30	Coffee & Chat	Capel Ucha	Grace Davies	01437 721533
M	2.30pm	Welsh Conversation Class	Capel Ucha	Grace Davies	01437 721533
M	7-8.30pm	Singing For Fun	Memorial Hall	Anne Hughes	07742 576031
M	7-9pm	Solva Youth Club	Football Club		
T	2-3pm	Solva Care Gentle Fitness	Memorial Hall	Lena Dixon	07805 717556
T	2pm	Men's Shed	Football Club	Robin Tyler	01437 721558
T	6-7pm	Fit4Life	Memorial Hall	Helen Patel	07920 197317
W	12.30pm	Senior Citizens' Lunch Club	Memorial Hall	Jane Pascoe	01437 721544
W	2-4pm	Solva Craft Club	Memorial Hall	Maggie	01437 720478
W	6pm	Youth Rowing Club	Trinity Quay	Steve Probert	07970 063074
W	8pm	Quiz at the Ship	Ship Inn		01437 721528
W	9pm	Dai Ball's Quiz/Open the box	Harbour Inn		01437 720013
T	10.30-12 noon	Coffee Morning / Mini library	Memorial Hall	Carol Ann	01437 721374
T	10.30-11.30am	Pilates	Memorial Hall	Pip Marsh	01437 720314
T	2pm	Solva WI (2nd Thurs of month)	Memorial Hall	Kathryn	01437 721283
T	2.30pm	Bible Study Group	Capel Ucha	Grace Davies	01437 721533
T	6pm	Rowing Club	Trinity Quay	Steve Probert	07970 063074
T	7.30pm	Solva Cinema (1st Thu/month)	Memorial Hall	Lena Dixon	07905 717556
F	10-12 noon	Solva Care "Drop-in Surgery"	Solva Surgery	Lena Dixon	07805 717556
F	2-4 pm	Solva Care "Friday Club"	Memorial Hall	Lena Dixon	07805 717556
Sn	10.30am	Tabletop sale (1st Sun/month)	Football Club	Medi George	07954 241589
Sn	10.30am	Church service	Capel Ucha	Grace Davies	01437 721533
Sn	9.30 / 10.30am	Church in Wales services	St Aidans/Whitchurch	See page 3	
Sn	8.30 pm	Barry's Fun Quiz & Raffle	Royal George	Barry	01437 720002

An Evening of MEDIUMSHIP with Karen Wilson at Solva Memorial Hall on Wednesday 3 April



at 7.30pm. Tickets £10. Call 07531 268861. In aid of Solva AFC. Karen Wilson is an award winning Pembrokeshire medium, who discovered her abilities as a psychic only 7 years ago. She has since travelled both nationally and internationally. Karen admits that she never foresaw her life being steered by the sixth sense she possesses.

Solva Seafoods
Fresh Crab,
Lobster & Wet
Fish Caught and
Prepared Daily.

T: 07773 846 560
Or: 01437 729169
Website: www.solvaseafoods.co.uk

Solva Caterers
Fully Licensed Bar Available for Weddings, Private Parties or any event. The perfect Wedding Venue also available with stunning views across St Davids Bay.

For all Enquiries call Jonathan Voyce on
07773 846560 or email: jono@solva.co.uk

PLANT A GARDEN, GROW HAPPINESS

www.daisybusgardens.com

MamGu welshcakes

Homemade Welshcakes
Welsh Inspired Dishes
Breakfast, Lunch,
Cakes & Drinks

20 Main Street, Solva
01437 454 369

42 Nun Street, St Davids
Seasonal flowers

St Davids Flowers
Free deliveries

Please call Clare: 07791 762718

THE HARBOUR INN
01437 720 013

THE HARBOUR INN OFFERS GOOD FOOD WITH
THE OPTION OF A DAILY SPECIALS BOARD,
FRIENDLY STAFF AND A WARM WELCOME.

A DOG FRIENDLY PUB ON THE SEAFRONT OF SOLVA.

SOLVA BOATOWNERS ASSOCIATION

TRINITY QUAY SOLVA
info@solvaboatowners.co.uk
Tel Sec 01437 721220
Tel HM 01437 721725

2, 3 & 4 August 2019

The Edge Festival
SOLVA - WALES

JOIN US FOR A CELEBRATION OF THE ARTS
LITERATURE - MUSIC - SPORT
AND WONDERFUL FOOD!

Hosting - Design - Social Media

webzer
Unlimited Webhosting
for £2.99 a month!
0800 6121 051
www.webzer.co.uk
SEO - Ecommerce - IT Services

MICHAEL G FAULKNER
Solva based
Traditional Builder
SPECIALISING IN LIME WORK AND
ERADICATING DAMP FROM OLD BUILDINGS

07788 694 324
www.michaelgfaulkner.co.uk

solva woollen mill
we are open all year
Monday to Friday
9.30am to 5.30pm
Also July to September
Saturday 9.30am - 5.30pm
Sunday 2pm - 5.30pm
www.solvawoolmill.co.uk
01437 721112
waterwheel shop tearoom

Maths Tutoring
Helping to give confidence,
unlock mental blocks.
Competitive rates
To discuss your needs call
Philipa Rose
01437 721483
07717 783492
or email
philipadr@outlook.com

Café on the Quay
Trinity Quay, Solva Harbour

Fine Italian Coffee
Homemade Cakes and Solva Crab
Sandwiches & Local Ice Cream

01437 721725
Enjoy the Solva sunshine sitting on the Quay...
Bring the family crabbing! We sell bait and lines.

Advertise your company,
service or product here



01437 720111
newyddionsolfach@gmail.com

The Ship, Solva 01437 721528

New home
cooked menu
Great drinks
offers
Open log fire
Wed quiz 8 pm
with jackpot
raffle
BOOK NOW!


Follow:  
@theshipinnsolva

Mathias Home Hardware 01437 720340

Mathias Home Hardware
is a traditional hardware
shop. We have everything
for any DIY, home, garden
or camping needs.

71 Nun Street, St Davids SA62 6NU

Advertise your company,
service or product here




01437 720111
newyddionsolfach@gmail.com

Advertise your company,
service or product here



01437 720111
newyddionsolfach@gmail.com

For Sale! - near-brand new Blomberg
dishwasher (used 4 times). Solva
Memorial Hall has been given an
industrial dishwasher. The new
domestic one purchased just before
Christmas is now no longer needed.
It cost the hall £379.99 and offers will be considered,
not less than £250. Call Peter on 01437 720111.



Advertise your company,
service or product here



01437 720111
newyddionsolfach@gmail.com

Solva News - There are 11 issues per year. Printed issues are free and delivered to households in Solva and available at Bay Views Stores, Window on Wales and Solva Memorial Hall. The publication also has its own website and facebook page. Readership is wide-reaching and it provides a vital community link and an essential visitor information guide. To advertise on this page (and reach 11400 readers - paper edition and 5700 readers - web with 1000 hits /month), please contact: Peter on 01437 720111 or email newyddionsolfach@gmail.com

A Big "Bingo" Thank You to the organisers and those who supported the Bingo evening in the Hall. All ages attended, with multiple Bingo prizes being won and, of course, there was a raffle. A grand total of £327 was raised for the hall redecorating scheme. Many thanks.

thank
you!