



COME TO THE EDGE!
SOLVA'S EDGE FESTIVAL - 3 to 5 AUGUST

Solva Regattas

Children's Regatta: Tuesday 7 August 12:30 hrs (entries from 11:00 hrs)

Inshore Regatta: Sunday 19 August 12:00 hrs (entries from 11:00 hrs)

- Oldest and possibly best Regattas in Wales
- Free to enter, cash prizes, medals to be won
- Entries in Inshore Regatta now 16+



Solva Regatta has evolved over its 130 year history. Over the last few years the committee has found it very challenging to run three separate events in the summer holidays. Solva is a busy village with many events packed into the short summer season. This year the Raft Race was held on Whit Sunday which proved to be a huge success. We are now concerned about the Inshore event on Sunday 19 August, which has seen declining entries. It would be a shame for this great village tradition to fade out. That's why we need your help. We are asking for ideas:- Could we run the children's and the adult event on the same day? Could we merge them? Could you help or join the committee? Could you sponsor a race? Could you organise the Regatta trip – an outing which hasn't run in the last few years? Could you enter the swimming or kayak races? Or how about donating to the Raffle? The committee would also like to appeal to you for donations, not only to fund prizes, but to cover the costs of organising the events including printing, safety cover, insurance, equipment renewal and administration.

At the regattas we will have the usual attractions, including side stalls, raffle and guess the flags. Louise's Café on the Quay will be catering for all events with fantastic food and a fully licensed bar. There is no charge for entry to any Regatta event except the Sailing Regatta (£10 per boat, £5 for SSC members) and programmes are free, and available in the village during the Regatta season. The committee would welcome your feedback and looks forward to seeing you on the quay.



Scarecrow Trail Sunday 12 & Monday 13 August

The theme this year is Detectives and/or Villains. Trail maps will be available at Bay View Stores and the Lower Car park between 10.00 am & 2.00 pm each day (£3.50 per map plus competition sheet). More information on building or taking part from Chief Scarecrow on: 01437-721164, 07377059265 or email franhb34@talktalk.net.



Church Services: 12 August at 09:30 am in St Aidans, Solva

26 August at 11:30 am in St David's, Whitchurch.

The Church fete will be held in Parc y Capel at 2 pm on Thursday 2 August. There will be stalls with bric-a-brac, books, bottles, plants and food plus raffles, cakes & teas (in the Memorial Hall). Plus the popular dog show that will start around 2.30 pm.





The Royal George
SOLVA
PUB & RESTAURANT

Visit us on 

New Italian Restaurant Menu

FREE PARKING! Tel: 01437 720002

Thursday is Ukulele night from 8pm!
Barry's Fun Quiz - 9pm Sundays
Everyone welcome.



07837 995910
info@llanungar.wales
www.llanungar.wales



LLANUNGAR CARAVAN & CAMPING
Solva, Pembrokeshire SA62 6UA

For All Your Home & Garden MAINTENANCE MATTERS

Call T: 01437 720179
Dean M: 07811 151678

FREE QUOTES FULLY INSURED
LOCAL & RELIABLE



Solva WI

Yet another garden visit for July's meeting. Once again, the weather was glorious for this meeting, which always takes place in a member's garden. Penny & Mike Williams kindly invited us to the Walled Garden at Llanunwas and had thought of everything. Delicious food was supplied by the members. Much chat followed the short meeting and some members enjoyed a wander around the garden.

Members showed interest in various items in the PFWI newsletter for September onwards. The Book Club met on Friday 27 July but the Walking Group will not restart until September. Some speakers have already been booked for next year's programme and members were asked for suggestions.

A preliminary meeting to organise the 2018 scarecrow will take place at Kathy Davies' house at 10.30 am on Friday 3 August. Please bring any appropriate props – you know who we are “doing”!

theWI
INSPIRING WOMEN

Riding Out

The International Icelandic Horse Federation Youth Cup is taking place in Sweden, between 28 July & 4 August, and 16 year old Cristina Edwards, from Whitchurch, is representing Great Britain - the only British rider to qualify! Fifteen countries will be participating in the week-long event which consists of three days of training, a rest day exploring the horse culture of Sweden, and three days of competition. The riders will take part in Icelandic sport – oval track competition, pace track, countryside riding, flag race, dressage and new for 2018, Tolt in Harmony. They must be competent in all discipline and prepared to train hard and to compete at top level competition, plus have a whole lot of fun! This is Cristina's second Youth Cup – and we wish her all the best in this exciting international event. Cristina keeps her Icelandic “Kvika” at Solva Icelandics, which has one of the largest herds of the rare gaited horses in the UK.



Play Day - Wednesday 1 August - The national day for play. Scolton Manor 10:00 am - 3:00 pm. Come and help us celebrate a "Children's Right to Play". An inclusive free event with lots of exciting play activities. For more information about the free bus service and this family event go to: www.facebook.com/PlayPembrokeshire

Solva Days Gone By Reunion will be held on Saturday 29 September in Solva Memorial Hall. Doors open @ 3 pm.

Tickets £10 (including Buffet) - B.Y.O alcohol from:
Helen Thomas 07432648596

Anne Lewis 07974742782

Ann Grey on 07958415758. Any profit will go to Solva Care / Solva Memorial Hall



Solva Memorial Hall 100+ Club final draw for the season results:

1st	£50	Keith & Sue Denman	number 129
2nd	£40	David Smith	number 92
3rd	£30	Myra Parkinson	number 17

The next draw will be in October. Members are requested to make sure their subscriptions are up to date. Please contact Jonathan Higgins on 01437 720213 to check.

theWI
INSPIRING WOMEN

**Solva WI welcomes
new members and
visitors. We meet
most months in
Solva Memorial Hall on the
2nd Thursday at 2 pm
Contact Kathy 01437 721283**

Solva Heritage Society Events

Thursday 16 August **"Then and Now"** a film show.

Contributions welcome. Please
phone: 017739 158024 or email
solvaheritatesociety62@gmail.com.
Other exhibitions commemorating
WW1 planned for later.



Recycled school uniforms

Ysgol Dewi Sant, Ysgol Bro Dewi and Ysgol Solfach

Please donate your old school uniform and any other clothes you no longer need. We are working in partnership with Clynyfw Care Farm and "anaya aid" who are going to help us send the clothes to refugee camps in Syria, Gaza, Yemen, Greece and France.

Collection point & dates: Friday 20 July – Thursday 2 August at: Siop y Bobl - St Davids (10:00 am – 3:30 pm – Monday to Friday. Saturday till 1:00 pm). If you missed the collection date at Solva Memorial Hall in July, please contact Joanne Gibbins at josolva@aol.com



St Davids & Solva Art Group's Summer Exhibition opens on the 2 August in St Davids City Hall. This lively group of local artists is bringing together its diverse styles and approaches for The Summer Exhibition. All original art work will be on display with prices to suit all pockets. Open daily from 10 am - 6 pm until Friday 17 August. Look forward to seeing you there!



Logo Competition – The new SCC logo design competition is underway.

Submissions need to reflect our community spirit and have a simple, modern but relevant theme, which incorporates the words "Solva Community Council" in both English and Welsh and the Solva CP School logo (without the words). Designs are required to be submitted on A4 paper and be capable of still being clear when reduced in size to 3.5 x 2.5 cm. You can submit as many designs as you wish and entries are encouraged from all ages. Please send your submission(s) labelled with your name, email address and telephone number to Bruce Payne (SCC Clerk) either by post (c/o Bay View Stores) or scanned and emailed to brucepayne241@gmail.com by Monday 3rd September 2018. The winner will be announced on Monday 17 September 2018. The designer of the winning logo will receive a £50 M&S voucher.



Hit The Wild West Garden Trail!

This is the perfect time to be visiting gardens and nurseries to gather inspiration and collect plants. The Wild West Garden Trail comprises seven venues to allow you to do just that. Each offers something special for trail finders! Pick up a leaflet at any of the locations, get it stamped and claim a free gift. Enter a prize draw if you collect all seven stamps. The gardens and nurseries are:

The Perennial Garden & Café, St Davids Plant & Nursery, Fishguard Garden Centre, Daisybus Gardens, Lamphey Court, Greenway Nursery and Hilton Court.



Advance Notice - Jamie Smith's MABON are returning to Solva Memorial Hall on Saturday 22 September. A band that performs with such enjoyment, excitement, style and wit. For more information please phone 01437 721374.



Look out for and
put in your
diaries:

**Thursday 29
November**

Our special themed
food & film event!



SOLVA COMMUNITY CINEMA

Thu 2 August: The Greatest Showman (PG)

Thu 6 September: The Shape of Water (15)

Thu 4 October: Finding your Feet (12)

Thu 1 November: Mercy (12A)

Adults: £5.00; Under 18's: £3.50

Doors open: 7.00 pm / Show: 7.30 pm



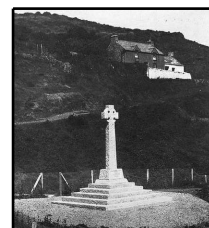
Solva Community Council

Harbour path land slides

Bruce Payne, SCC clerk, convened a site meeting of interested parties to discuss the landslips that occurred over the winter and spring and temporarily blocked the path between the Lower Solva car park and the Sand Quay. The path is on National Trust land but is managed by the Pembrokeshire Coast National Parks, who manage most of the Pembrokeshire footpaths. The PCC engineer informed us that the cause of the landslips was water discharging down the slope. The water came from a drain that runs under the main road at the point where the quay road joins the A487. A drain diversion has taken place and it now discharges over the masonry section of the slope. The path will be tidied up by PCNP later in the year. Pembrokeshire County Council will address the subsidence in the quay road in the winter, it will mean closure of the road for a short period but plenty of notice will be given.

Tree Thinning Around the Memorial Cross

The proposal to thin trees to allow a view of the sea from the Memorial Cross has attracted many considered views from Solva citizens. The consensus is to support the proposal but all correspondents have made the point that is important to maintain the rookery. It must be stressed that no wholesale felling of trees has been suggested, only careful thinning and management. The next step is to produce a detailed plan which will be shared with everyone before a formal application is made to PCNP. It has been encouraging to see so many people giving the matter some thought and expressing their views to the SCC.



Wheelchair and buggy path

The committee, comprising representatives of Solva Care and the SCC, met to walk the possible routes that would allow easy access from the top of the village to Lower Solva, away from the busy road. The proposal to create a mobility and exercise route for all ages has gained a great deal of support within the community and fits with the Hywel Dda Health Board's stated well-being objectives. A number of routes are being looked at - each posing its own particular challenges. Barry Cook, the PCC states officer was informed of the project when he attended the SCC meeting on 11 July. When the committee has whittled down the possible routes the proposals will be shared for you to comment.

New recycling plans clarified

From Autumn next year householders will be able to recycle a greater range of plastic as well as paper, cardboard, glass, cans, and food. Recycling collections will take place every week and households will be provided with free boxes and bags to collect the items. There will be a move to three-weekly bin bags collections, on the basis that householders will need to place fewer items in black bags thanks to the increased recycling opportunities. A maximum of three black bags will be collected per household every three weeks. Any additional bags taken to the local civic amenity sites will not be charged for. Additional containers will be provided for householders if required, upon request, for example for larger families. In addition there will be a fortnightly collection service for bulky absorbent hygiene products, including discreet collections where requested. Visit <http://www.pembrokeshire.gov.uk> for information.



Raul Speek Gallery event

Tapas and Jazz Night at the Old Chapel on Saturday 11 August at 7.30 pm. Please come and join us.

Caerhys Farm Harvest Party

Friday 10 & Saturday 11 August
Live bands, DJ's, Farm Tours, Talks and great local food. Tickets £10 for full weekend from TYF (St Davids) or on door. Caerhys Farm, Berea SA62 6DX

The Harbour Inn will be holding a Gin Festival from Thursday 16 to Sunday 19 August.



Tuesday 3 July - Trip to Daisybus Gardens near Llandeloy.

Thirteen Solva residents (including four volunteers) made a second visit to Daisybus. The gardens had matured immensely since our last visit and after a tour of them all (Grandma's, Seaside, the Maze etc.), and saying hello to the donkeys, we had tea and cake under the welcome shade of the trees. A very enjoyable afternoon!



Tuesday 10 July – Trip to Whitesands with the VC Gallery

Seven of us went by bus to Whitesands courtesy of the VC Gallery in Haverfordwest. Pete gave an interesting talk on the geology and history of the area, and Barry drove us to the Oriel y Parc gallery and enlightened us on many of the exhibits, in particular, the Graham Sutherland paintings.



The last Friday Club before the summer break was on 27 July and the club will start again on Friday 14 September. We would like to thank all volunteers and others who have given their time and talent - the Craft Group, The Ukulele Pirates, Tony's Country & Western, St Davids Cathedral Bells and everyone else who has supported us.

Sue and Mollie were invited to present on Solva Care at the Bevan Commission's International Conference in Newport on 4 July. There was a lot of interest in what we are doing in Solva. The key question discussed was - "How can what Solva is doing be replicated elsewhere?"



Solva Care Big Lottery application - Local community support

Solva Care will make an application in October for a Big Lottery People and Places grant. The submission requires detailed information and clear evidence to demonstrate how Solva Care is people-led and how the community has been integral in informing and shaping what we do. Throughout August Trustees will attend coffee mornings, and from 4 September, Friday Club and Luncheon club, inviting those who come along to comment on Solva Care, what the charity should be focused on and how we can do it better. We welcome your thoughts and comments, new ideas and suggestions. Please pop in to any of these community events and talk to us. You can also send your views via the Solva Care website. We look forward to seeing or hearing from you.

Appointment of Trustees to Solva Care - Would you like to make a difference to people's lives?

Solva Care (Registered Charity No 11772878) wishes to appoint new members to its Board of Trustees. The Board furthers the work of Solva Care in the Solva and Whitchurch area to counteract isolation and help with practical problems. This helps in community cohesion and is in line with the goals of the Social Services and Well-being (Wales) Act 2014. The Trustees work with the Co-ordinator, Development Officer, the group of volunteers and all relevant agencies. The Board of Trustees manages the strategy, development and on-going work of the charity. Trustees are expected to attend meetings (about once a month) and carry out work to further the aims of the charity. Ideally Trustees should live in the locality and have an interest in health and well-being. We welcome applications from all age groups and will arrange meeting times to suit you if you are currently in employment or have other commitments. Trustees, although not paid, gain a great deal of satisfaction from helping to connect our community. For an informal chat, or to express an interest, contact Solva Care Chair Mollie Roach on 01437 721580 or contact@solvacare.co.uk
Closing for date applications: 12 August 2018.

Shalom House event - From July 1 to 31 August - join us for the Shalom Coast Path Challenge. We'd like volunteers to raise money for Shalom House by walking sections of the 184 mile Coastal Path. For a registration pack please contact us via Facebook or email: info@shalomstdavids.org or phone 01437 721344. Let's Do It!



The Edge Festival will be over by the time some of you read this newsletter.

If so, those that live within a stone's throw of the field can now take out their ear plugs! Many thanks to everybody who contributed to the huge success that was the 2018 festival. To all of you who gave time, labour, donations to the raffle, and cash donations, we thank you wholeheartedly. Soon the Edge Festival will be a registered charity but that will not change our purpose - to help and support our community. If you helped the festival then you can be part of the decision process to decide where the money goes this year. We aim to continue the award of a bursary to a deserving applicant who needs help to achieve their career goals or personal challenges. The bursary is open to all.



Solva AFC - Solva vs St Davids

Old rivalries were renewed at the annual Solva vs St Davids "Old Boys" football match on Saturday 14 July, in front of a packed crowd at Maes y Môr. The teams, which were made up of a mixture of current and former players, played out an entertaining 5-5 draw and raised a total of £475 for the club's senior and junior teams in the process. A big thank you to all who helped raise money through giving their time, raffle prizes or donations. Special thanks go to the Penknife Club for its donation of £200. Afterwards, the end of season awards were presented following a season of mixed fortunes for Solva AFC's senior teams, with the first team narrowly avoiding relegation from Division 2 and the 2nd team finishing fourth in Division 4.

1st Team Player of the Year: Harry Elliott

1st Team Player's Player of the Year: Ben Joyce

1st Team Top Scorer: Ryan Thomas

2nd Team Player of the Year: Will Griffin

2nd Team Player's Player of the Year: Iwan James

2nd Team Top Scorers: Will Griffin and Corey John

Most Improved Player: Karl Davies

Young Player of the Year: Aled Davies

Supporter of the Year: Martin Hughes



Back Row: Aled Davies, Will Griffin, Martin Hughes, Clive Thomas (1st Team Manager), James Griffin (2nd Team Manager) and Tom Williams (2nd Team Manager). Front Row: Harry Elliott, Ben Joyce, Corey John and Ryan Thomas. Not present: Karl Davies and Iwan James.

Solva Sailing Club hosted the annual sailing race on behalf of Solva Regatta on Sunday 22 July. The day was sunny with a gentle breeze from the South West. There were five boats with a total of 10 sailors. Race Officer was Bella, aided by Sarah and Cristina, with Mark and Camilla who kindly provided their super luxurious rib as committee boat. Winner of the fast boat handicap was Fleur, with Piers as helm and Josie and Ian winning crew. Slow boat handicap winner was Cormorant, helmed by Paul Kelly. The Sailing Club intends to look at whether a dinghy race is more appropriate in future, and would welcome feedback on this. There are plans to promote more cruising in company by sharing information - please get in touch if you'd like to know more.



Solva Boat Owners Association News:

- Swim to the Edge - Edge festival swim will be held on Saturday 4 August, starting from the Iron post this year, at 16:00 hours. SBOA parking only.
- Children's regatta Tuesday 7 August at 12:30 hours.
- St Davids Life Boat Sunday 12 August at 19:00 hours. SBOA parking only.
- Inshore regatta Sunday 19 August at 12:00 hours.

No parking on Trinity Quay on Tuesday 7 & Sunday 19 August - Thank you.



WHAT'S ON

1 Jul - 31 Aug	Shalom Coast Path Challenge	All day
20 Jul - 2 Aug	School uniform recycling, drop off Siop y Bobl, St Davids City Hall	All day
28 Jul - 4 Aug	Cristina Edwards UK entrant for Icelandic Horse Federation Youth Cup, Sweden	All day
1 Aug	National day for Play, Scolton manor	10 am - 3 pm
2 -17 Aug	St Davids & Solva Art Group exhibition, City Hall, St Davids	10 am - 6 pm
Thu 2 Aug	Solva Community Cinema presents "The Greatest Showman", Memorial Hall	7.30 pm
Thu 2 Aug	Church Fete, Parc y Capel	2 pm
Fri 3 Aug	Solva WI Scarecrow meeting, Kathy Davie's house	10.:30 am
3,4,5 Aug	Edge Festival, Solva	All day
Tue 7 Aug	Children's Regatta, Trinity Quay	entries from 11:00 am
10 & 11 Aug	Caerhys Harvest Party (with community feast and Ceiligh on Fri 10 Aug at 7 pm)	All day
Sat 11 Aug	Tapas & Jazz Night, Raul Speek Gallery, Lower Solva	7:30 pm
Sun 12 Aug	Church service St Aidans	9:30 am
Sun 12 Aug	Closing date for Appointment of Trustees to Solva Care applications	5 pm
Sun 12 Aug	St Davids Lifeboat visit, Trinity Quay	7 pm
12 & 13 Aug	Solva Scarecrow trail, Solva	All day
Thu 16 Aug	Solva Heritage Society film "Then and Now", Memorial Hall	7 pm
16 - 19 Aug	Harbour Inn Gin Festival, Lower Solva	All day
Sun 19 Aug	Inshore Regatta, Trinity Quay	entries from 11:00 am
Sun 26 Aug	Church service St David's church, Whitchurch	11:30 am
Mon 3 Sep	SCC Logo Competition closing date	5 pm
Sat 22 Sep	Jamie Smith's MABON performance, Memorial Hall	7:30 pm

DAY / TIME	REGULAR EVENTS	LOCATION	CONTACT	
M	10.00 - 11.00 am	Solva Tai Chi	Memorial Hall	Fey: 720889
	10.30 - 12.30 pm	Coffee & Chat	Capel Ucha	Grace Davies: 721533
	2.30 pm	Welsh Conversation Class	Capel Ucha	Grace Davies: 721533
	7.00 - 9.00 pm	Solva Youth Club	Football Club	
	7.00 - 8.30 pm	Singing for Fun	Memorial Hall	Anne Hughes 07742 576031
◆				
T	6.30 - 7.30 pm	Fit4Life	Memorial Hall	Helen Platel: 07920 197317
◆				
W	12.30 pm	Solva Senior Citizen's Luncheon Club	Memorial Hall	
	2.00 - 4.00 pm	Solva Craft Club	Football Club	Maggie:720478/Jean:929351
	6.00 pm	Youth Rowing Club	Trinity Quay	Steve Probert: 07970 063074
	9.00 pm	Quiz Night / Open the Box with Dai Ball	Harbour Inn	
◆				
T	10.30 - 11.30 am	St Davids Pilates - Intermediate mat work	Memorial Hall	Pip Marsh: 720314
	10.30 - 12 noon	Coffee Morning (+ Mini library, Shalom Charity collection / 2 nd Thurs/month),	Memorial Hall	
	2.00 pm	Solva W I (2nd Thursday of month)	Memorial Hall	Kathryn: 721283
	2.30 pm	Word searchers Bible Study Group	Capel Ucha	Grace Davies: 721533
	6.00 pm	Rowing Club	Trinity Quay	Steve Probert: 07970 063074
	7.30 pm	Solva Cinema (1st Thursday of month)	Memorial Hall	
◆				
F	2 - 4 pm	Solva Care “Friday Club” Activities	Memorial Hall	Lena Dixon 07805 717556
◆				
S	TBA	Sunday Church Services (St Aidans & Whitchurch) See new rotas at either church.		
	10.30 am	Sunday Service	Capel Ucha	Grace Davies: 721533
	8.30 pm	Barry's Fun Quiz & Raffle	Royal George	

Coca Community Feast - Friday 10 August at 7:00 pm followed by a Ceiligh. Come together for an organic produce three-course communal meal, cooked by Tâ a Mwg. At Caerhys Farm, Berea (near Abereiddy) St David's SA62 6DX. Local ales and cider will also be available.


Gardening & Wildlife Club
 Roch Village Hall and venues 2 - 4 pm
 1st Thursday in the month (April - December)
Please phone for events and outings
All Welcome
 Contact: Christine Martin 01437 710048
eden@christinemartin.plus.com

Café on the Quay

Trinity Quay, Solva Harbour

Fine Italian Coffee
Homemade Cakes and Solva Crab
Sandwiches & Local Ice Cream

01437 721725

Enjoy the Solva sunshine sitting on the Quay...
Bring the family crabbing! We sell bait and lines.

THE HARBOUR INN

01437 720 013

THE HARBOUR INN OFFERS GOOD FOOD WITH
THE OPTION OF A DAILY SPECIALS BOARD,
FRIENDLY STAFF AND A WARM WELCOME.

A DOG FRIENDLY PUB ON THE SEAFRONT OF SOLVA.

Solva Seafoods



T: 07773 846 560

Or 01437 729169

Website: www.solvaseafoods.co.uk

Fresh Crab,
Lobster & Wet
Fish Caught and
Prepared Daily.

Solva Caterers

Fully Licensed Bar Available for Weddings, Private Parties or any event. The
perfect Wedding Venue also available with stunning views across St Brides Bay.

For all Enquiries call Jonathan Voyce on
07773 846560 or email: jono@solva.co.uk

MICHAEL G FAULKNER

Solva based

Traditional Builder

SPECIALISING IN LIME WORK AND
ERADICATING DAMP FROM OLD BUILDINGS

07788 694 324

www.michaelgfaulkner.co.uk

Fish & Chips
Ice cream
Late evening Thursdays & Fridays

breakfast
lunch
afternoon tea

Fully Licensed
Thirty Five Café & Restaurant
Lower Solva Open every day Daily Specials
01437 729236

42 Nun Street, St Davids

Free Local Deliveries



Please call Clare: 07791 762 718

PLANT A GARDEN, GROW
HAPPINESS



DAISYBUSGARDENS.COM



L M Griffiths & Co

Chartered Certified Accountants

Pleased to be able to assist
Solva Community Council
For a free initial consultation
contact

Tina Rogers or Mike Harries

01437 763454



TRINITY QUAY SOLVA

info@solvaboatowners.co.uk

Tel Sec 01437 721220

Tel HM 01437 721725

Maths Tutoring

Helping to give
confidence, unlock
mental blocks.

Competitive rates

To discuss your needs call

Philipa Rose

01437 721483

07717 783492

or email

philipadr@outlook.com

Mathias Home Hardware

T: 01437 720340

Mathias Home Hardware is a
family run traditional hardware
shop. We have everything
for any DIY, home, garden or
camping needs.

Address: 71 Nun Street, St Davids SA62 6NU

3,4,5 August 2018

The Edge Festival

SOLVA - WALES

JOIN US FOR A CELEBRATION OF THE ARTS
LITERATURE - MUSIC - SPORT
AND WONDERFUL FOOD!

The Ship, Solva 01437 721528

Under New Management

Open fire
Daily food and
drink offers

Free function
room hire with
big screen



Follow



@theshippinnsolva

Hosting - Design - Social Media



Unlimited Webhosting
for £2.99 a month!

0800 6121 051

www.webzer.co.uk

SEO - Ecommerce - IT Services



The Oldest Working Woollen Mill
in Pembrokeshire. Restored
Waterwheel ~ Mill Shop & Tea
Room ~ Free Entry & Parking
Monday - Friday 9.30 am - 5.30 pm
Also Saturdays July - September
& Sundays 2 pm - 5.30 pm
solvawoollenmill.co.uk 01437 721112

Website SOLVA NEWS:
www.solvanews.co.uk

Email SOLVA NEWS:
newyddionsolfach@gmail.com