



Solva Surgery – staff changes

Jane Chinn who has been our Practice Nurse for 27 years will be retiring from Solva Surgery next week.

Without a doubt, she will be missed enormously by

staff and of course by patients. We all wish her a very long and happy early retirement!

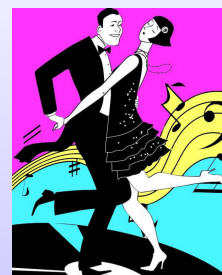
We welcome two new nurses to the team at Solva Surgery; Rebecca Bowie and Anne Davies.

Rebecca joins us from the Coronary Care Unit at Withybush General Hospital. Anne has previously worked as a Practice Nurse and has worked as a Nurse Practitioner for Care on Call. They will be working in conjunction with Alison Richards who has been at Solva Surgery for almost 14 years.



1920's themed Night at the Hall – Saturday 21 April at 7.30 pm - Tickets £10.

Join in the fun and frivolity of a 1920's themed evening, with magic, mystery and music. Come dressed up, if you wish, to see Tom Thumb, our amazing local magician perform the impossible before your very eyes. Followed by a "topping" short play full of surprises and mystery, performed by members of SADS. To round the evening off, the Saint City Jazz Band will provide that essential 20's sound. A cocktail on arrival and canapés in the interval are included. There will be a bar. Tickets available from: Bay View Stores and Window on Wales. Please book early.



MamGu Welshcakes is pleased to announce the opening of new premises in Solva this Easter. Thea and Becky, have recently taken over the Old Printing House and spent the past few weeks turning into a place for all to come and relax, catch up, have some homemade food, sample the delicious drinks and of course eat their infamous traditional and alternative welshcakes hot off the Griddle.

Open all year round serving breakfast, lunch and eventually afternoon teas Becky and Thea are excited to welcome the people of Solva.

Whether you are looking for a place to relax after a stroll along Solva harbour or a venue for a special birthday, make sure you pop down and say hello!



Duck race – Easter Monday - Last reminder to buy your favourite named duck ticket before they all go.

The start is at 3 pm and the ducks should arrive at the finish line within 20 minutes, weather permitting. This is a major fund raiser for the Hall and your support is greatly appreciated. Tickets available from Bay View Stores, Window on Wales, The Ship, Harbour Inn, Royal George and on the day at Café 35.



Bingo Night

Solva Memorial Hall



Friday 6 April at 6 pm. Yes, its eyes down and here we go for another Bingo Night at the Hall. Doors open 6 pm. Refreshments and cakes will be on sale to whet the appetite. Bring the family and your dabbers to enjoy this treat of number calling. All proceeds for upkeep of the Hall.



The Royal George
SOLVA
PUB & RESTAURANT

Visit us on 

New Italian Restaurant Menu

FREE PARKING! Tel: 01437 720002

Thursday is Ukulele night from 8pm!
Barry's Fun Quiz - 9pm Sundays
Everyone welcome.



07837 995910
info@llanungar.wales
www.llanungar.wales



LLANUNGAR CARAVAN & CAMPING
Solva, Pembrokeshire SA62 6UA

42 Nun Street, St Davids

Free Local Deliveries



Seasonal Flowers

Please call Clare: 07791 762 718

Solva WI

Various items were discussed and activities and outings for the warmer months suggested. Four members have booked to attend Denman College in December and three members are going on the Pembrokeshire Federation holiday to the Bournemouth area in June. The Pancake Morning raised £104 which has been presented to the Mosaic Project (see page 3).

Following the business and tea, Sarah Beynon of the Bug Farm gave a very lively, interesting and informative presentation entitled "The Bugs March On".

The next meeting is on Thursday 12 April starting at 1 pm with a "pot luck lunch" (please remember to bring a plate of food!). We will also be holding the annual 'Jean Platt competition', the theme this year is a cooked item, sweet or savoury, with herbs. The speaker will be Jenny Longland on "Wed to a Policeman". Visitors are always welcome.



Open Gardens Appeal for Video equipment.

On the weekend of June 16-17 we are holding an Open Gardens event in support of Solva Care. Eight gardens, all in upper Solva, will be open for your enjoyment. Teas will be served at two which have sea views. Brochures will be available nearer the time. Through one of the online sites, Localgiving, we are running an appeal to fund video equipment to be used to record the garden event and others in the future. To make a donation log in via <https://localgiving.org/solva-care> and find the Open Gardens appeal. Those making donations will be sent a video of the gardens and views of Solva. Brochures will soon be available in the village for those wishing to visit the gardens. Any problems or enquiries call Fran on 01437-721164 or email franhb34@talktalk.net.



St David's Day Eisteddfod 2018

There were several winners from Solva in the competitions this year. Theme was farming.

Mollie Page - 1st Embroidery - cushion. Joint 3rd - flower arranging.

Grace Davies - Joint 3rd - flower arranging.

Fran Barker - 3rd Poem in English

Maisie Brevitt - 1st Crochet - Tractor. 2nd Knitted item - child's book.

Solva Craft Group - 1st Group knitting - Farm Shop

Mary Trott - 1st reading an unseen, unpunctuated passage in English. 2nd unpunctuated passage in Welsh.

Gareth Evans - 1st unpunctuated passage in Welsh.

2nd unpunctuated passage in English. 1st and 3rd Acrostic sentence in Welsh. 2nd - Story in Welsh. 3rd Limerick in Welsh. 3rd - recitation in Welsh.



Church Services

Easter Sunday

1 April at 10.30:
St Aidans, Solva -
Family service.

Sunday 8 April at 09.30

Morning Prayer - St Aidans

Sunday 15 April at 11.30

Eucharist - Whitchurch

Sunday 22 April at 09.30

Eucharist - St Aidans

Sunday 29 April at 11.00

joint LMA Eucharist

followed by parish lunch in
Mathry.



**Solva WI welcomes
new members and
visitors. We meet
most months in**

**Solva Memorial Hall on the
2nd Thursday at 2 pm**

Contact Kathy 01437 721283

Beach Clean at Newgale with Surfers Against Sewage.

Sunday 22 April at 3 pm. Join local
Surfers Against Sewage & National
Park Ranger to clean the beach of

litter, on this worthwhile and important subject of marine
conservation. Learn how you can recycle waste, from the
representatives attending, to help protect our oceans.



Ysgol Solfach / Solva C.P School

Solva School Urdd Eisteddfodd successes:

On Thursday 15 March pupils from Solva School participated in the local area Eisteddfod Competition which took place at Letterston Memorial Hall. Many of our pupils won prizes for various performance competitions. Di iawn pawb!

Congratulations Isla! - A big congratulations to Isla Davies who participated in BBC Radio 2's 500 words story writer competition... We are so proud of you Isla.

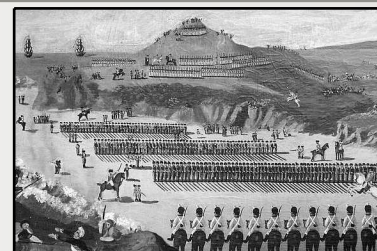


Oriel y Parc - Explore the Seashore - Caerfai, St Davids - Tuesday 3 April from 2.30 - 4 pm. Head to the beach for an adventure with our local National Park Ranger, searching out the extraordinary world of rock pools, sea creatures and seashore finds. Children must be accompanied by an adult. £3 per child Booking Advisable: 01437 720392.



Solva Heritage Society

At our February talk in the Ship Inn. Martin Small enthralled us with his display of exquisite miniature figures representing the French and Pembrokeshire "armies" as they mustered their numbers and faced each other at Carreg Gwastad in February in 1797. The officially recorded facts, scrupulously researched by Martin, called into question the local telling of the Jemima Nicholas story but then, truth is often more fascinating than fantasy! In support of the Solva Community Council's commemoration of WW1, we are working towards an exhibition to be completed by November. A research party will begin at the Records Office on Wednesday 28 March (New members welcome). From 2 April, Easter Monday, in St Aidans Church, Solva, we will begin with a time-line of the main events of that war with a list of all those who fought for their country. In May, Grace Davies will give a presentation from her collection of pictures and stories of Solva at the time.



The Great Solva Mosaic Steps Project

Raymond and Johnny from PCC have made an excellent job of slabbing the steps, ready for the new railings to be installed. Over twenty people attended the meeting on Wednesday 21 March to discuss ideas on other community projects that could be started using mosaics as the art form. Some people have already signed up for more classes - dates and venue to be decided. Watch this space for further announcements. If you are interested in further information or would like to take part please contact Penny on 720901 or Sue on 07817 410782. At the meeting Jane Pascoe presented, on behalf of WI, a donation of £104 to the Project. This was a fantastic surprise and very gratefully received.



SOLVA COMMUNITY CINEMA

Presents:

Thurs 5 April: Paddington 2 (PG)

Thurs 3 May: Murder on the Orient Express (12A)

Thurs 7 June: Call me by your name (15)

Thurs 5 July: Three Billboards outside Ebbing, Missouri (15)

Adults: £5.00; Under 18's: £3.50

Doors open: 7.00 pm / Show: 7.30 pm



3

Council Tax

Council tax demands for 2018/19 have just been issued by PCC. SCC would like to inform local residents they can pay over 12 months as opposed to 10.

How to pay your Council Tax:

Council tax can be paid by 12 monthly installments. However, requests to do this must be received by Friday 30 March. If received after this date they will be spread over the remainder of the financial year (10 monthly installments!).

Paying by Direct Debit could not be made easier, if you telephone the Council they will make all the necessary arrangements on your behalf and advise you in advance of your installments. If you would like to pay by this method please contact Revenue Services on 01437 764551 and have your banking details available.



Solva Community Council will meet on Wednesday 4 April at 7 pm in Solva Memorial Hall. Agenda items:

- Community Action Plan 2017
- Community Social Enterprise
- SCC AGM
- Village clean-up 2018
- Defibrillator & First Aid Training
- Play & Skate Parks
- First World War commemorative plans
- Finance report
- Planning applications
- Local concerns

Members of the local community are welcome. Please call Bruce Payne 07890 987259 if you wish to attend.

Seagull Proof Bags - will be available to purchase all over Pembrokeshire from April, following successful trials in Tenby. The reusable bags will cost £5.30 each. From 1 April onwards, the bags will be available to be purchased from the following locations: Pembrokeshire Frame, Merlins Bridge; Pembrokeshire Frame, London Road, Pembroke Dock; Pembrokeshire Frame, Goodwick Industrial Estate; Tenby Town Council, De Valence Pavillion, Upper Frog Street; St Davids City Council, St Davids City Hall, High Street.



Bulky Household Waste - Concerns have been raised regarding disposal of bulky household waste that PCC refuse collection will not take, or that cannot be recycled. Householders are responsible for disposing of their own waste in a safe, legal manner. Businesses that charge to dispose of such waste must hold a waste carrier's licence and issue householders with the correct paperwork. Some householders have fallen victim to "fly-tippers", where an item sent to the civic amenity (the tip) has not reached that amenity. The waste has then been traced back to the owner, and they have been fined. Pembrokeshire County Council operates a scheme where residents can have up to 10 large items disposed of for £40 by Pembrokeshire FRAME, who work in partnership with PCC. This includes furniture and white goods, fridges etc. This is a completely safe and legal way of disposing of those items. Even better news - the cost will shortly be dropped to £20 for up to 10 items. To book a collection, please call 01437 764551.



The Youth Club - Solva Youth Club will be held in the Memorial Hall on Wednesday evenings from 7 - 9 pm until the Football Clubhouse is reopened.



Solva Rowing Club held its annual Frostbite race on 25 February. It was a short course with boats just poking their noses out of the Harbour in a bitter easterly wind. After 3 hard fought races it was the Royal George team who rowed to victory and defended its title for another year. Thanks to everyone who took part and helped with safety on the day. Also a thank you to Solva Sailing Club who allowed us to use the brand new sail training room in Kelvin's shed for our briefing and post-race de-brief, a brilliant addition to the Quay and an asset for both Clubs.



NEWS

Solva Care welcomed a new volunteer to the Team - Jasmine who is volunteering under the Duke of Edinburgh scheme. Jasmine will be working on the film project.

Power of Attorney

If you paid to register a Power of Attorney in England or Wales between 1 April 2013 and 31 March 2017, you're owed a refund of up to £54.

Under a new Government scheme, those who paid a registration fee for a Lasting Power of Attorney in that period can apply for a partial refund, as they were charged more than was necessary. A Lasting Power of Attorney is a legal document which allows you, while you still have the mental capacity to do so, to nominate a trusted friend or relative to look after your affairs if you lose capacity. There are two types of Power of Attorney, one for finance and property and another for health and welfare. Some will have registered both and so can claim a refund of up to £108. You can find more information on <https://www.moneysavingexpert.com/news/family/2018/02/100000s-owed-refund-of-power-of-attorney-fees>.

To apply, you can claim a refund online or phone the Office of the Public Guardian's help line on 0300 456 0300 and select option six. You don't need the Power of Attorney document itself, but you will need:

- The donor's name, address and date of birth
- Their UK bank account number and sort code
- The name of one of the attorneys on the Power of Attorney

The Friday Club - has provided fun and entertainment this term that included several bands, (Country and Western and Solva Ukulele Pirates), craft, gentle movement sessions, music quiz, beetle drive and St. Davids hand bells. Nadia provided several craft sessions and on Friday 23 March volunteers and the people we help, painted their Easter bowls. In addition, the club has presented scrapbook memories and reminiscence sessions.



Hoax Calls - A local resident recently received an international call from a man claiming to be from BT. He informed the resident that they had not paid a bill and requested bank details. The resident knew that this was untrue and refused to comply with the request, at which point the man became abusive. If you answer a call similar to this, do not give out any personal information or bank details and put the phone down.

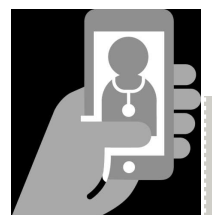
The Rural Neighbourhood Police Team can be contacted by phoning 101.



Solva Surgery - Easter closures over the bank holiday weekend.

Friday 30th March (Good Friday)	CLOSED
Saturday 31st March	CLOSED
Sunday 1st April	CLOSED
Monday 2nd April (Easter Monday)	CLOSED
Monday 7th May (May Bank Holiday)	CLOSED
Monday 29th May (Spring Bank Holiday)	CLOSED

THERE WILL ALWAYS BE A DOCTOR ON CALL WHEN THE SURGERY IS CLOSED
In an EMERGENCY Please telephone 01437 721306



The surgery car park will be resurfaced on 4,5,6 & 7 April. There will be limited access and no car parking available. There is limited parking for those who have mobility problems. The surgery will still be open. It is advised that patients park in the lay-by opposite the church, if attending for an appointment. Please pick up any repeat prescriptions before the 5 April or after the 9 April.

Edge Festival News

The festival organisation is proceeding apace with the weekend of 3/4/5 August getting ever closer. The Swim to the Edge has sold out already, early bird tickets are starting to fly, the bands are booked; we have the best lineup of poets and writers since the festival started. Friday night headliners are the Wild Boys, a rabble rousing band who will rock the socks off every festival goer, Saturday's headliners are One Step Beyond, a major ska band, supported by the Rin Tins. Local talent is represented by Raul, Roy Jones, Lucy Jones and Honey Fungus — what a line up! We have:- a TS Eliot shortlisted poet in Robert Minhinick; an amazing array of food outlets; a new marquee set up which will enhance your festival experience; there is talk of a secret Edge Gin being developed especially for the event; the bar, as always, will have a number of local craft beers. We have once again attracted sponsorship from the The Port of Milford Haven Authority and private individuals have also been chipping in - you know who you are, many thanks. Remember, all this is to help support our community and raise cash for local projects and organisations. Let us know if you want to help, or donate, or even perform.



Solva Sailing Club - Would your child like to have a go at sailing?

The club is running a morning session on Saturday 21 April from 9.30 am until 1 pm. Aimed at beginners, or those wanting to build on a previous taster session, by lunchtime they will be sailing by themselves around the harbour. Intended for 8 to 14 year olds, the cost is £10 / £5 subsequent siblings, and places must be booked with Helen

helenghughes@outlook.com or with Bella in Window on Wales.

Last season, a few fun, unpressurised sessions were held for 'grown ups' who wanted to try dinghy sailing. Please let us know if you'd like to have a go so we can gauge demand for more. More dates for your sailing diary – for more details please visit the Facebook Page or email Helen (as above) to register your interest to receive updates.

Tuesday 17 April AGM at the Royal George, starting at 7 pm.

Possibly Wednesday 23 May PB2 refresher course. For those who have their certificate but would like to practise.

Sunday 22 July Sailing Regatta TBC



Solva Rowing & Water Sports Club - has commenced its 'club' nights which are every

Thursday at 6 pm down at the quay. Rowing is a sport for everyone, it is a really good way of getting some exercise in a relaxed and friendly environment, you can row competitively or just enjoy a leisurely social row. We have very experienced coaches / coxes who will show you the ropes if you have not rowed before. We offer 2 taster sessions for free so you can try before deciding to join or not. Membership is now due for this season so could all current members please try and complete a membership form as soon as possible, these are available in the rowing club shed or online here <http://solva.co.uk/srwc/srwcmem18.pdf>



SBOA - There will be no access for cars on Trinity Quay during the lift-in on Tuesday 3 April. Pedestrian access is limited and under the direction of the lift team. Café on the Quay will be open from 06.30 hrs. Those members who have not yet received their boat and car stickers have not provided the secretary with either insurance documentation covering all boats and/or confirmation of vehicle registration numbers. Visitors stickers are available from the Harbour Master.



WHAT'S ON

Sun 1 Apr	Easter church service, St Aidans, Solva	10.30 am
Sun 1 Apr	Daisybus Gardens of Wellbeing daffodil festival, Llandeloy	10 am - 5 pm
Mon 2 Apr	Solva Duck Race, Lower Solva	3 pm
Tue 3 Apr	SBOA boats "Lift-in", Lower car park and the quays	All day
Wed 4 - 7 Apr	Solva Surgery car park resurfacing starts, Solva Surgery	All day
Wed 4 Apr	SCC meeting, Memorial Hall	7 pm
Thu 5 Apr	Solva Cinema presents "Paddington 2" (PG), Memorial Hall	7.30 pm
Fri 6 Apr	Bingo Night at the Hall, Memorial Hall	6 pm
Sun 8 Apr	Morning service, St Aidans, Solva	9.30 am
Thu 12 Apr	Solva WI meeting, Memorial Hall	1 pm
Sun 15 Apr	Eucharist, St Davids, Whitchurch	11.30 am
Tue 17 April	Solva Sailing Club AGM, Royal George	7 pm
Sat 21 Apr	1920's Themed Night, Memorial Hall	7.30 pm
Sun 22 Apr	Eucharist, St Aidans, Solva	09.30 am
Sun 22 Apr	Newgale Beach Clean-up, Newgale	3 pm
Sun 29 Apr	Joint LMA Eucharist and parish lunch, Mathry	11.00 am
Thu 3 May	Solva Cinema presents "Murder on the Orient Express (12A), Memorial Hall	7.30 pm

DAY / TIME	REGULAR EVENTS	LOCATION	CONTACT	
M	10.00 - 11.00 am	Solva Tai Chi	Memorial Hall	Fey: 720889
	10.30 - 12.30 pm	Coffee & Chat	Capel Ucha	Grace Davies: 721533
	2.30 pm	Welsh Conversation Class	Capel Ucha	Grace Davies: 721533
	7.00 - 9.00 pm	Solva Youth Club	Football Club	
	7.00 - 8.30 pm	Singing for Fun	Memorial Hall	Anne Hughes 07742 576031
T	10.00 - 12.00 pm	Wellness/Nutrition Club	32 Bryn Seion	Helen Hammond: 721516
	6.30 - 7.30 pm	Fit4Life	Memorial Hall	Helen Platel: 07920 197317
	9.00 pm	Tony's Big Time Bingo	Harbour Inn	
W	12.30 pm	Solva Senior Citizen's Luncheon Club	Memorial Hall	
	2.00 - 4.00 pm	Solva Craft Club	Football Club	Maggie:720478/Jean:929351
	6.00 pm	Youth Rowing Club	Trinity Quay	Steve Probert: 07970 063074
	9.00 pm	Quiz Night / Open the Box with Dai Ball	Harbour Inn	
T	10.30 - 11.30 am	St Davids Pilates - Intermediate mat work	Memorial Hall	Pip Marsh: 720314
	10.30 - 12 noon	Coffee Morning (+ Mini library, Shalom Charity collection / 2 nd Thurs/month),	Memorial Hall	
	2.00 pm	Solva W I (2nd Thursday of month)	Memorial Hall	Kathryn: 721283
	2.30 pm	Word searchers Bible Study Group	Capel Ucha	Grace Davies: 721533
	6.00 pm	Rowing Club	Trinity Quay	Steve Probert: 07970 063074
	7.30 pm	Solva Cinema (1st Thursday of month)	Memorial Hall	
F	2 - 4 pm	Solva Care - Senior Group Music & Movement, Memorial Hall		Lena Dixon 07805 717556
S	TBA	Sunday Church Services (St Aidans & Whitchurch) See new rotas at either church.		
	10.30 am	Sunday Service	Capel Ucha	Grace Davies: 721533
	8.30 pm	Barry's Fun Quiz & Raffle	Royal George	

What's on at The Bug Farm

Open daily over Easter holidays;
Sat 24 Mar- Sun 15 Apr, 10:30 am - 4:30 pm. Join us for Easter trails, crafts and lovely up-close handling sessions - for plenty of Easter holiday fun! Grub Kitchen will be open every day for yummy seasonal treats too!



Gardening & Wildlife Club

Roch Village Hall and venues 2 - 4 pm
1st Thursday in the month (April - December)
Please phone for events and outings
All Welcome
Contact: Christine Martin 01437 710048
eden@christinemartin.plus.com

Café on the Quay

Trinity Quay, Solva Harbour

Fine Italian Coffee
Homemade Cakes and Solva Crab
Sandwiches & Local Ice Cream

01437 721725

Enjoy the Solva sunshine sitting on the Quay...
Bring the family crabbing! We sell bait and lines.



PLANT A GARDEN, GROW
HAPPINESS

DAISEYBUSGARDENS.COM

Mathias Home Hardware

T: 01437 720340

Mathias Home Hardware is a family run traditional hardware shop. We have everything for any DIY, home, garden or camping needs.

Address: **71 Nun Street, St Davids SA62 6NU**

THE HARBOUR INN

01437 720 013

THE HARBOUR INN OFFERS GOOD FOOD WITH
THE OPTION OF A DAILY SPECIALS BOARD,
FRIENDLY STAFF AND A WARM WELCOME.

A DOG FRIENDLY PUB ON THE SEAFRONT OF SOLVA.

Solva Seafoods

T: 07773 846 560
Or 01437 729169

Website: www.solvaseafoods.co.uk

Fresh Crab,
Lobster & Wet
Fish Caught and
Prepared Daily.

Solva Caterers

Fully Licensed Bar Available for Weddings, Private Parties or any event. The perfect Wedding Venue also available with stunning views across St Brides Bay.

For all Enquiries call Jonathan Voyce on
07773 846560 or email: jono@solva.co.uk

MICHAEL G FAULKNER

Solva based

Traditional Builder

SPECIALISING IN LIME WORK AND
ERADICATING DAMP FROM OLD BUILDINGS

07788 694 324

www.michaelgfaulkner.co.uk



L M Griffiths & Co

Chartered Certified Accountants

Pleased to be able to assist
Solva Community Council
For a free initial consultation
contact

Tina Rogers or Mike Harries

01437 763454

info@lmgriffiths.co.uk



TRINITY QUAY SOLVA

info@solvaboatowners.co.uk

Tel Sec 01437 721220

Tel HM 01437 721725

Looking Forward to 2018

The Edge Festival

SOLVA - WALES

JOIN US FOR A CELEBRATION OF THE ARTS
LITERATURE - MUSIC - SPORT
AND WONDERFUL FOOD!

The Ship, Solva 01437 721528

Under New Management

Open fire
Daily food and
drink offers
Free function
room hire with
big screen



Follow us: [f](https://www.facebook.com/theshipinnsolva) [t](https://www.tumblr.com/theshipinnsolva)
@theshipinnsolva

Hosting - Design - Social Media



Unlimited Webhosting
for £2.99 a month!

0800 6121 051

www.webzer.co.uk

SEO - Ecommerce - IT Services

Fish & Chips Ice cream
Late evening Thursdays & Fridays
breakfast lunch afternoon tea
Fully Licensed
Thirty Five Café & Restaurant
Lower Solva Open every day
Daily Specials
01437 729236

Website SOLVA NEWS:
www.solvanews.co.uk

Maths Tutoring
Helping to give
confidence, unlock mental
blocks.

Competitive rates

To discuss your needs call

Philipa Symons

01437 721483 /

07717 783492

or email

philipadr@outlook.com



The Oldest Working Woollen Mill in
Pembrokeshire
Restored Waterwheel ~ Mill Shop &
Tea Room ~ Free Entry & Parking
Monday - Friday 9.30 am - 5.30 pm
Also open Saturdays July - September
& Sundays 2 pm - 5.30 pm

Email SOLVA NEWS:
newyddionsolfach@gmail.com