

The newsletter can be downloaded  
as a pdf from the website:  
[www.solvanews.co.uk](http://www.solvanews.co.uk)

**December 2019 No. 132**

**Free Copy  
Please take one**

**Parc y Capel Carols** - We would be pleased to welcome all to the 2019 Parc y Capel Carol singing to be held at **Capel Ucha** on Wednesday 18 December at 5.30pm. Carol singing with young members of the school choir to be followed by light refreshments. Please join us.



**Jamie Smith's "MABON"** - Saturday 15 February, Solva Memorial Hall 7.30pm. Mabon has many followers in this area so I am very pleased to inform you all that Solva Memorial Hall is included in their **Farewell Tour** next year. Early booking is advised. Tickets £10, Concessions £5 (Disabled, Children, Students), Phone: Carol Ann: 07970 614233. Also on sale at Thursday Coffee Mornings in the Hall.



"Best Night out", "Amazing", "Uplifting", "Fantastic"... these are some of the few comments made as people left the performance of "Mountain Music" ...buzzing from their evening out in Solva Memorial Hall on Friday 1 November. "We are so lucky to have these opportunities to see such shows through the NightOut Scheme. Thank you Carol Ann Jones (and helpers) for all your organisation and hard work to make it possible". Look out for the next show "Mabon" (details above) on 15 February 2020.

## "Sparkling Solva" - update

We have 36 people signed up to create a living advent calendar window! Some days will have more than one window being lit up! The first will be on 1 December. Free maps will be available from Bay View Stores, Solva Memorial Hall, Solva Surgery and Window on Wales. There will be pictures of the windows on our fb page and we are also planning a blog. On Saturday 21 December there will be singing around the village at 5pm (weather permitting) with Singing for Fun, followed by mulled wine and mince pies in the Hall.



## Singing for Fun

Invites you to come along to the Memorial Hall on Monday 16 December at 7.30pm for a really good seasonal sing! Entry is free and there will be a retiring collection for Wales Air Ambulance. Christmas carols and songs (in English - ac hefyd yn Gymraeg) and several of our own pieces will be the order of the day. Refreshments afterwards. And excellent company guaranteed! If you already sing, or have always fancied singing, why not come and join us in the New Year? There is a new starting date of 13 January (7pm in the Memorial Hall) and everyone is welcome to try us out for free. Even if you think that you are THE worst singer in the world, it's almost certainly not true ... and you're bound to improve by stretching the vocal cords each week!



## Harbour Inn Christmas

Live music from Sorted on Saturday 7 December at 9pm. Christmas Bingo at the Harbour Tuesday 10 December, with Cash Prizes and stocking fillers to be won!



**The Royal George**  
SOLVA  
PUB & RESTAURANT

Visit us on

**New Italian Restaurant Menu**

**FREE PARKING!** Tel: 01437 720002

Tuesday is Ukulele night from 8pm!  
Barry's Fun Quiz - 9pm Sundays  
Everyone welcome.

From our cows... ...to your cone

**POINTZ CASTLE ICE CREAM**

[www.PointzCastle.com](http://www.PointzCastle.com)

07837 995910  
info@llanungar.wales  
www.llanungar.wales

**LLANUNGAR CARAVAN & CAMPING**  
Solva, Pembrokeshire SA62 6UA

**MAINTENANCE MATTERS**  
Home & Garden

Interior/Exterior Decorating  
Fence/Shed/Decking Staining  
Gutter/Fascia/Patio Cleaning  
**ALL Garden Maintenance**

**Prompt, Reliable, FREE Quotations**  
Dean: 01437 720179 or 07811 151678

## Solva WI

As has become "tradition", the Annual Meeting on Thursday 14 November was preceded by a choice of three delicious soups made by members. Coffee with M&S chocolates followed!

The monthly meeting began at 2pm and included reminders of forthcoming events including the Christmas Meal on Monday 2 December at the Cambrian Inn and a day visit to Cegin Gareth in 2020. Members were also reminded of the Church Christmas Fayre on 21 November at which we ran the Bottle Tombola and gift stall, and that we are taking part in the Christmas Tree Festival in St Aidans Church on 30 November & 1 December. Our President, Mary Haughton will read a lesson at the Dewisland Carol Service on Sunday 8 December.

The Christmas party meeting will be on Thursday 12 December at 2pm. Jane Wells has very kindly offered her home as the venue as the Memorial Hall is in use as the Polling Station that day, please remember to bring a plate of Festive food and donations of tinned savoury food for the PATCH Christmas Appeal.

The Annual Meeting then followed with reports from the President and Secretary and audited accounts were available to view. Di Monte gave the vote of thanks to the President and the committee. Mary Haughton was re-elected as President, Jane Wells stays as Secretary and Mary McMahon as Treasurer. Jilly Missen re-joins the committee.

## St Davids RNLI

The fundraising branch raised an incredible £415 at the annual Cheese and Wine evening held at the Harbour Inn, Solva.



A big thank you to all those that supported the event and joined us on the evening as well as those who contributed: including The Veg Patch, St Davids Foods, Caerfai farm and the Harbour Inn.

## Coffee Morning

A reminder that children from Solva School will be entertaining us at our pre Christmas get together on Thursday 19 Dec. Everyone welcome.



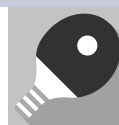
## Church in Wales Christmas services

Please see list of services in St Aidans and St Davids church porches and on the [www.gdlmachurches.co.uk](http://www.gdlmachurches.co.uk) website.



## Solva Memorial Hall News - Table Tennis table in Hall

The Hall has been given a full sized tennis table which is now situated in the main hall. If this is of interest, maybe a Solva table tennis team could be formed? Contact Peter on 01437 720111 to put your name down. Also, the Hall WiFi is now up and running. It is free for hall users and log-in details are displayed on the notice board.



## Slimming World Solva

Many thanks to everybody that attended the launch of the new Solva Slimming World group, we had a great turn out and a fantastic night! Join us on Wednesdays at the Memorial Hall at 5:30pm, a very warm welcome awaits you. Many thanks Samara Goring.



## New Year's Day Treasure Hunt

Starts at Bay View Stores 10-10.30am and concludes at the Harbour Inn later on in the afternoon - for answers and results.



Solva WI welcomes new members and visitors. We meet most months in Solva Memorial Hall on the 2<sup>nd</sup> Thursday at 2pm  
Contact Kathryn:  
01437 721283

## SOLVA COMMUNITY CINEMA

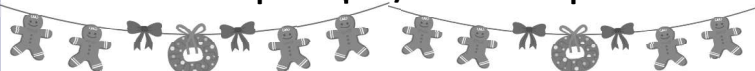
Thu 5 Dec: "Fisherman's Friends" (12A)

Thu 9 Jan 2020 (NOT 1st Thursday): "Yesterday" (12A)

Thu 6 Feb "Black Cat White Cat" (15)

Adults: £5.00; Under 18's: £3.50

Doors open: 7pm / Show: 7:30pm



Thursday 5 Dec



## Ysgol Penrhyn Dewi

The school raised over £700 for Children in Need which is a tremendous effort. We had a non-school uniform day, dressed up, had “wacky” hair, played guessing games and held a Dewi’s Got Talent. All were tremendous fun!

Armistice Day - Ysgol Penrhyn Dewi was very proud to have supported the schools outreach Armistice Day learning experience at the Cathedral on Monday 11 November. Thank you to Simon Pearce, Janet Ingram, Sophie Whitmarsh, Canon Leigh and the Cathedral Bell ringers. As well as holding full school assemblies on every campus, we also planted poppies in remembrance of those who gave everything for our country.



## Solva Shopping Evening – Wednesday 4 December

Confirmed businesses open for the Solva Shopping Evening are:

Window on Wales, Mamgu’s, Kala’s Hair Boutique, The Old Pharmacy, Oriel Fach, Ship Inn, The Sail Loft, Harbour Inn, Little Bee House and Cambrian Inn.

Stalls in several venues, Christmas trees for sale at The Sail Loft and a quiz at 8pm in the Harbour Inn. There will also be a free prize draw open to those that visit all open establishments, plus an Elf hunt for children. Window on Wales will have special offers on and will be serving complimentary mulled wine. We will also be hosting tables for Joy Dixon’s art and Dilly’s locally made chocolates.

The Christmas tree for the car park will again be donated by Solva Business Group.



## Solva Surgery - Opening hours for Christmas & New Year:

Tuesday 24 December - Usual Opening Hours (doors close at 5.30pm)

Wednesday 25 December - CLOSED (Christmas Day)

Thursday 26 December - CLOSED (Boxing Day)

Friday 27 December - Usual Opening Hours

Monday 30 December - Usual Opening Hours

Tuesday 31 December - Usual Opening Hours

Wednesday 1 January 2020 - CLOSED (New Year's Day)

Thursday 2 January 2020- Usual Opening Hours

THERE WILL ALWAYS BE A DOCTOR ON CALL WHEN THE SURGERY IS CLOSED

In an EMERGENCY Please telephone 01437 721306.



Repeat Prescription Requests Solva Surgery/St Davids Pharmacy Notice to Patients - Please note we require at least 48 hours notice to process orders for repeat prescriptions. We recommend that you order your repeat prescription when you have at least 7 days supply remaining.

Solva Surgery still has a few flu vaccinations left and would like to encourage eligible patients to make an appointment. Phone 01437 721306.

## Update on Flu Vaccinations – St Davids Surgery

As patients will be aware, there are 2 types of adult flu vaccine on offer this year – one for patients aged 65 or over on 31 March 2020, and one for patients aged under 65 on 1st April 2020. We have now used all our supplies of the flu vaccine for the over 65s, and are unable to source any further supplies of this vaccine. Therefore, if you would still like to receive the flu vaccine this autumn/winter, please contact your local pharmacy urgently, and they should be able to arrange a free NHS flu vaccination for you while they still have stock.

For patients aged under 65 there are still a few supplies of the adult flu vaccine available, however, we will not be able to source further supplies. Eligible categories:

❖ Are pregnant ❖ Are a carer (in receipt of Carer’s Allowance or are the main carer of an elderly or disabled person) ❖ Live in a long-stay residential care home or long-stay Facility ❖ Have one or more of the following “at risk” medical conditions - asthma; COPD; diabetes; a BMI of 40 or over; or a long-term condition affecting the heart, liver, kidneys, brain/nervous system, immune system or spleen. If you would like this flu vaccine, please phone the Surgery to make an appointment on 01437 720303.



### Solva Community Land Trust

The Solva Community Land Trust is up and running. This month we will hear whether Pembrokeshire County Council will move responsibility for building new housing on the football field opposite Bay View Stores from PCC to the Community Land Trust. This will mean that the community will have a say in how the housing is designed, the social mix, and how it is to be run. Solva will have income in perpetuity. One of the most important elements is to establish what the need is for the housing. We do this by talking to the residents of Solva and have arranged two sessions when this can take place. The dates are 9 Dec at 2pm and 11 Dec at 6.30pm. So if you see a need for a house, or somebody in your family, or indeed know of a friend or acquaintance who would benefit from the project, please come along and talk to us on the dates. The meetings will take place in the newly refurbished AFC Clubhouse.



### Solva Community Council

SCC will meet on Tuesday 3 Dec at 6.30pm in the Memorial Hall.

Items on the agenda:

- 2020/21 Budget and Precept
- Finance report
- Planning applications
- Local concerns - Bro Dawel traffic

Members of the local community who wish to attend, please inform SCC Clerk Bruce Payne on 07890 987259.



**Shalom House** is delighted that the new shop - "shalom@no13" is now open in St Davids at 13 New Street (the Old Post office). We would very much like to receive your donations - vintage and party occasion wear if possible. Especially with the Festive Season upon us, you will find great clothing here at an affordable price. We are also in need of a few more volunteers to help in the shop. Do you have a few hours to spare - may be a morning or afternoon to help? Please get in touch - call us on 01437 721344. We also have a programme of Focus Fridays starting up again in January - subjects covering coping with fatigue, improving balance and preventing falls, carers support and nutritional top tips for a jaded palate. Anyone can attend these days – check out the details on our website [www.shalomstdavids.org](http://www.shalomstdavids.org) to book yourself in. We look forward to welcoming you at Shalom House. In the meantime, thank you for all your support over the last year. We send all good wishes for the festive season.



**Pointz Castle Christmas Fair** - Sunday 8 December, 11am - 4pm.

An opportunity for shopping with lots of local stall holders in attendance, visiting Santa in his grotto, mulled wine and plenty of festive ice cream flavours!



### Trecadwgan Farm Update

You are first to read the news here, or maybe you have heard on the grapevine already, that the "Save Trecadwgan Farm Campaign" was successful! The Campaign Group forged a strong alliance with the Burns Pet Foods Foundation to acquire the Farm which will be developed as a resource for the community, by the newly created Community Benefit Society, Cymdeithas Trecadwgan. The two organisations, CBS and the Foundation, strongly share the vision for the Farm and there are exciting times ahead for those wanting to work with us to make the dream a reality. To quote the spokesperson for the Foundation "our two organisations have similar objectives and aspirations and we are looking forward to working together in years to come".

So what next? The purchase should be completed by the end of the year and the CBS is already working hard to hit the ground running with the work ahead. Governance is being sorted and more detailed plans put in place. Membership of the CBS will be launched, the CBS Board constituted and fund-raising activated to get the repair work and farm activities underway. As always we welcome input from the community so please contact the current Board members of the CBS if you would like to get involved in any aspect of the work. We need you! Please contact: Gareth Chapman: 07900 411952 /



**4** Jessie Buchanan: 07810 071826 / Sue Denman: 07817 410782



**SOLVA CARE CHARITY - Registered Charity number: 1172873**

**Lena Dixon, Co-ordinator: 07805 717556,**

**Lesley Robertson-Steel, Project Officer: 07722 091664**

**Email: [contact@solvacare.co.uk](mailto:contact@solvacare.co.uk)**



## News:

We have attended a few events in the last month:

23 Oct - Ageing Well in Wales, Letterston - we gave a talk on "How to bring people together to make better communities".

24 Oct - We held a seminar in Solva Memorial Hall: "Can a small community start a care co-operative? Answers from Solva Care". About 45 people from organisations around Wales attended, including Ian Westley, Chief Exec of PCC who spoke movingly about his own experiences of the care system.

The Innovate to Save Project has been challenging, but the day generated great interest and we are now looking at how to move forward on how to arrange care locally.

25 Oct - Our "American Supper" was held on the worst evening of the year which affected attendance. We are planning to repeat it in the spring as a family event.

7 Nov - Representatives from Solva Care attended the Primary Care Conference in Newport, Gwent and staffed a stand there, which sparked quite a lot of interest.

**Bus passes** - On 31 October there was a drop-in session at the hall for those who wanted to renew their bus passes - thank you Tomos for arranging this. Anyone who has not yet renewed their pass and would like help to do it online, can visit Lena in Solva Surgery on Fridays 10-12 noon. Don't forget that you need your NI Number and your old bus pass!

**Donation** - Solva Care was given a £125 donation from a recent Football Tournament, which was collected by Mollie and Fran at a ceremony Goodwick on Wednesday 20 November. Many thanks to the footballers!

## Friday Club

November - Tony's Country and Western once again provided entertainment for two hours enticing people to dance and join in, provoking memories whilst at the same time creating pleasure and enjoyment. Gill and Ifor's Fun Quiz was extremely welcome recreating memories, laughter as well as featuring local characters. Ukulele Pirates once again provided a varied programme that relied heavily on audience participation with singing, using musical instruments and convivial rapport. Helen's Gentle movement, now a regular and opportune Friday Club second half routine, is clearly reaping rewards with increased mobility of our members. Members completed a very positive questionnaire during the break of this session.

Nadia had a craft session to create the first Advent Calendar window display and Cathedral Bells performed once again with their delightful and entertaining programme. Ukulele Pirates join us once again on 6 December, whilst Carol Ann's "Festive" Beetle Drive will complete the end of term Friday Club sessions, on Friday 13 December. All sessions will be followed by Helen's Gentle Movement.

**Vincent Davies Shopping** - 11 friends of Solva Care, transported by Bws y Bobl, wandered around the fabulous store amongst an array of shoppers most of whom circulated around the Singing human life-sized Penguins. We had a pre-booked lunch with excellent service.

**Cinema at Fishguard** - Fran and Sandra ferried five friends of Solva Care to watch American in Paris, a block buster with Gene Kelly. This released memories, throughout the picnic and film. Once again the support from Theatre Gwaun was superb.



**Oriel y Parc Christmas Market - Saturday 7 December, 10am-4pm**

A celebration of Christmas with local foods, crafts and music, plus festive foods in the café. FREE entry. Father Christmas visit £2.50 per child.



### Edge Festival 2020 – Literature Offer

A couple of the authors/poets that I have lined up for the Literature section of the Festival also teach, and have offered to run a writing workshop at the Festival as well.

I just wondered how much enthusiasm there might be for this in the village generally – as ideally, we'd need to be sure of plenty of local participants in advance? If you're a budding – or even experienced – Solva writer, please let me know on [ian@ianmcdonald.co](mailto:ian@ianmcdonald.co) - Many thanks Ian McDonald



Merry



Christmas

### Ideas Festival St Davids

The Ideas Festival held an engagement event in Ysgol Penrhyn Dewi on a very wet night last month. The purpose of the event was to gauge what level of support there is in the north peninsula for such a festival. Over 50 people turned up and an evening of lively debate took place ranging over subjects as diverse as spirituality, the environment and politics.

The Dean of the cathedral, Adam Price of Plaid Cymru and Dr Sarah Beynon sparked the discussion in these topics. Solva is well represented on the organising committee and Solva residents also attended the evening event. The feedback will help shape the main event which takes place in March 2020. It is hoped that this event will become a regular fixture bringing visitors to Solva and St Davids every March.

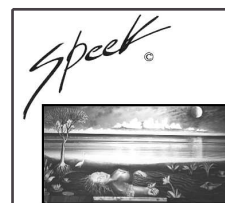
ideas  
festival

### Winter Art Course with Raul Speek

Painting in traditional academic form on Tuesday evenings from 6.30pm - 9.30pm. Eight sessions starting Tuesday 14 January. Suitable for beginners and intermediates. Course price £70 p/p – materials available to purchase.

Classes at the Old Chapel, Main Street, Solva.

For more information contact: 01437 721907 / [raul@heatherbennett.co.uk](mailto:raul@heatherbennett.co.uk).



### Fireworks fund

A big thank you to everyone who helped make this year's firework's event a success - to the bucketeers, those dealing with traffic in the car park, the safety officers, the fireworks and bonfire crew, the local businesses supporting the event with our collection boxes and to all those individuals who've contributed throughout the year. Many thanks, too, to all of you who came to the event and donated so generously - your donations go towards funding next year's event.

### Bug Farm Christmas Fayre - Saturday

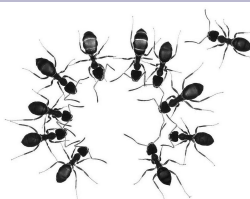
14 Dec, 10:30am - 16:30pm

£1.50 entry (includes entry to The Bug Farm) Time to get festive! Sip on some mulled wine and enjoy a fabulous range of stalls selling the best of Pembrokeshire's art, craft and home made produce.

Plus - unusual goings on at The Bug Farm!

A story of undead queens, evil sisters and brave soldiers! Come and find out more about how the Bug Farm's 20,000-strong leaf cutter ant colony has chosen to do something amazing!

The Grub Kitchen Christmas party menu is now live (see [www.thebugfarm.co.uk](http://www.thebugfarm.co.uk) for details and to book) - And the launch



### Solva Sailing Club

Would like to say thank you to everyone who has used our club house this year. Leaving the room as you found it and recording your use is much appreciated. We're grateful, too, for your membership fees and donations. These help towards the rent. We wish you all continued enjoyment of Solva Harbour, The Committee.

### Solva Rowing & Water Sports Club

The annual Frost Bite race will be held on Saturday 18 January from Trinity quay. HT at 12.30pm, entry and start times TBA on SRWS facebook page and posters, nearer the time.



## WHAT'S ON

Tue 3 Dec	Solva Community Council meeting	Memorial Hall	6.30pm
Wed 4 Dec	Solva Shopping Evening	Lower Solva	>7:30pm
Thu 5 Dec	Solva Cinema presents "Fisherman's Friends" (12A)	Memorial Hall	7.30pm
Fri 6 Dec	Friday Club with Solva Ukulele Pirates	Memorial Hall	2-4pm
Sat 7 Dec	Oriel y Parc Christmas Market	St Davids	10am-4pm
Sat 7 Dec	Community Christmas Lunch	Memorial Hall	12:30pm
Sat 7 Dec	Live Music from "Sorted" at the Harbour Inn	Harbour Inn	9pm
Sun 8 Dec	Pointz Castle Ice Cream Christmas Fair	Pointz Castle farm	11am-4pm
Mon 9 Dec	Solva Community Land Trust meeting	Solva AFC clubhouse	2pm
Tue 10 Dec	Christmas Bingo at the Harbour Inn	Harbour Inn	9pm
Wed 11 Dec	Solva Community Land Trust meeting	Solva AFC clubhouse	6.30pm
Fri 13 Dec	Friday Club with Carol Ann's "Festive" Beetle Drive	Memorial Hall	2-4pm
Sat 14 Dec	Bug Farm Christmas Fayre	St Davids	10.30am-4pm
Mon 16 Dec	Singing for Fun in aid of Wales Air Ambulance service	Memorial Hall	7.30pm
Wed 18 Dec	Parc y Capel Carol singing	Capel Ucha	5.30pm
Thu 19 Dec	Coffee Morning with Solva School singers	Memorial Hall	10.30-12noon
Sat 21 Dec	"Sparkling Solva" singing around the village - start:	Memorial Hall	5pm
Wed 1 Jan	New Year's Day Treasure Hunt - start Bay View Stores	Bay View Stores	10-10.30am
Thu 9 Jan	Solva Cinema presents "Yesterday" (12A)	Memorial Hall	7.30pm
Solva Surgery Christmas opening hours - see page 3			

## REGULAR EVENTS

M	10-11am	Solva Tai Chi	Memorial Hall	Fey	07802 648793
M	10.30am-12.30	Coffee & Chat	Capel Ucha	Grace Davies	01437 721533
M	2.30pm	Welsh Conversation Class	Capel Ucha	Grace Davies	01437 721533
M	7-8.30pm	Singing For Fun	Memorial Hall	Anne Hughes	07742 576031
M	7-9pm	Solva Youth Club	Football Club		
T	2-3pm	Gentle Fitness	Memorial Hall	Laura: letswalkpembs@gmail.com	
T	2pm	Men's Shed	Football Club	Robin Tyler	01437 721588
T	6-7.30pm	Hatha Akhanda Yoga	Memorial Hall	Catrin	07581 201477
T	7.45pm	Pembs Ukulele Pirates practice	Royal George	Jonathan	01437 720213
T	9pm	Tony's Big Time Bingo (3rd Tues)	Harbour Inn		01437 720013
W	12.30pm	Senior Citizens' Lunch Club	Memorial Hall	Jane Pascoe	01437 721544
W	2-4pm	Solva Craft Club	Memorial Hall	Maggie	01437 720478
W	5.30-7pm	Slimming World	Memorial Hall	Samara	07498 322314
W	8pm	Quiz at the Ship	Ship Inn		01437 721528
W	9pm	Dai Ball's Quiz/Open the box	Harbour Inn		01437 720013
T	10.30-12 noon	Coffee Morning / Mini library	Memorial Hall	Carol Ann	01437 721374
T	10.30-11.30am	Pilates	Memorial Hall	Pip Marsh	01437 720314
T	11.45am - 1pm	Computer Club	Memorial Hall	Tom	01437 774775
T	2pm	Solva WI (2nd Thurs of month)	Memorial Hall	Kathryn	01437 721283
T	2.30pm	Bible Study Group	Capel Ucha	Grace Davies	01437 721533
T	6pm	Rowing Club	Trinity Quay	Steve Probert	07970 063074
T	7.30pm	Solva Cinema (1st Thu/month)	Memorial Hall	Lena Dixon	07905 717556
F	10-12 noon	Solva Care "Drop-in Surgery"	Solva Surgery	Lena Dixon	07805 717556
F	2-4 pm	Solva Care "Friday Club"	Memorial Hall	Lena Dixon	07805 717556
Sn	10.30am	Church service	Capel Ucha	Grace Davies	01437 721533
Sn	9.30 / 10.30am	Church in Wales services	St Aidans/Whitchurch	See page 3	
Sn	8.30 pm	Barry's Fun Quiz & Raffle	Royal George	Barry	01437 720002

**Waste & Recycling** - If anyone has any concerns with the new waste and recycling arrangements, please contact Councillor Mark Carter on 07976 553912 or markmcarter19@gmail.com.



**Solva Seafoods**

Fresh Crab,  
Lobster & Wet  
Fish Caught and  
Prepared Daily.

T: 07773 846 560  
Or 01437 729169  
Website: [www.solvaseafoods.co.uk](http://www.solvaseafoods.co.uk)

**Solva Caterers**

Fully Licensed Bar Available for Weddings, Private Parties or any event. The perfect Wedding Venue also available with stunning views across St Brides Bay.

For all Enquiries call Jonathan Voyce on  
07773 846560 or email: [jono@solva.co.uk](mailto:jono@solva.co.uk)

Thank you for making it a huge success

**The Edge Festival**

**SOLVA - WALES**

JOIN US FOR A CELEBRATION OF THE ARTS  
LITERATURE - MUSIC - SPORT  
AND WONDERFUL FOOD & DRINK

**MamGu welshcakes**

Homemade Welshcakes  
Welsh Inspired Dishes  
Breakfast, Lunch,  
Cakes & Drinks

20 Main Street, Solva  
01437 454369

42 Nun Street, St Davids

Seasonal flowers

**St Davids Flowers**

Local deliveries

Please call Clare: 07791 762718

**SOLVA BOATOWNERS ASSOCIATION**

TRINITY QUAY SOLVA

[info@solvaboatowners.co.uk](mailto:info@solvaboatowners.co.uk)

Tel Sec 01437 721220  
Tel HM 01437 721725

Hosting - Design - Social Media

**webzer**

Unlimited Webhosting  
for £2.99 a month!

0800 6121 051  
[www.webzer.co.uk](http://www.webzer.co.uk)

SEO - Ecommerce - IT Services

**THE HARBOUR INN**

01437 720 013

THE HARBOUR INN OFFERS GOOD FOOD WITH  
THE OPTION OF A DAILY SPECIALS BOARD,  
FRIENDLY STAFF AND A WARM WELCOME.

A DOG FRIENDLY PUB ON THE SEAFRONT OF SOLVA.

Mae eich cerdyn  
bws yn dod i ben  
Your bus pass  
will expire soon

[www.trc.cymru/cerdyntelthio](http://www.trc.cymru/cerdyntelthio)  
[www.tfw.wales/travelcards](http://www.tfw.wales/travelcards)  
0300 303 4240

Apply/reapply at: 0300 303 4240  
[www.tfw.wales/travelcards](http://www.tfw.wales/travelcards)

**solva woollen mill**

we are open all year  
Monday to Friday  
9.30am to 5.30pm  
Also July to September  
Saturday 9.30am - 5.30pm  
Sunday 2pm - 5.30pm  
[www.solvawoolenmill.co.uk](http://www.solvawoolenmill.co.uk)  
01437 721112  
waterwheel shop tearoom

**The Ship, Solva 01437 721528**

New home cooked  
menu  
Great drinks offers  
Open log fire  
Wed quiz 8 pm  
with jackpot  
raffle  
**BOOK NOW!**

Follow: [f](https://www.facebook.com/theshippnnsolva) [t](https://www.tumblr.com/theshippnnsolva)  
[@theshippnnsolva](https://www.facebook.com/theshippnnsolva)

**Mathias Home Hardware** 01437 720340

Mathias Home Hardware is  
a traditional hardware  
shop. We have everything  
for any DIY, home, garden  
or camping needs.

71 Nun Street, St Davids SA62 6NU

**Café on the Quay**  
Trinity Quay, Solva Harbour

Fine Italian Coffee  
Homemade Cakes and Solva Crab  
Sandwiches & Local Ice Cream

01437 721725

Enjoy the Solva sunshine sitting on the Quay...  
Bring the family crabbing! We sell bait and lines.

**Menevia BEAUTY & SPA**

ENJOY A WIDE VARIETY OF BEAUTY  
SPA AND COMPLEMENTARY THERAPIES  
IN A RELAXING FRIENDLY PLACE

42 GOAT STREET ST DAVIDS  
CALL US 01437 454 114

Advertise your company, service or  
product here



01437 720111  
[newyddionsolfach@gmail.com](mailto:newyddionsolfach@gmail.com)

**RAUL SPEEK GALLERY**

Fine Art, Artist's Studio, Photographs, Prints  
Art Workshops, Talks, Music, Jewellery, Gifts  
Music & Tapas Nights, Pop-up Café

The Old Chapel, Main Street, Solva SA62 6UU  
Tel: 01437 721907  
e: [heather@heatherbennett.co.uk](mailto:heather@heatherbennett.co.uk)  
[www.raulspeek.co.uk](http://www.raulspeek.co.uk) [www.heatherbennett.co.uk](http://www.heatherbennett.co.uk)

Please send articles for publication to: [newyddionsolfach@gmail.com](mailto:newyddionsolfach@gmail.com)